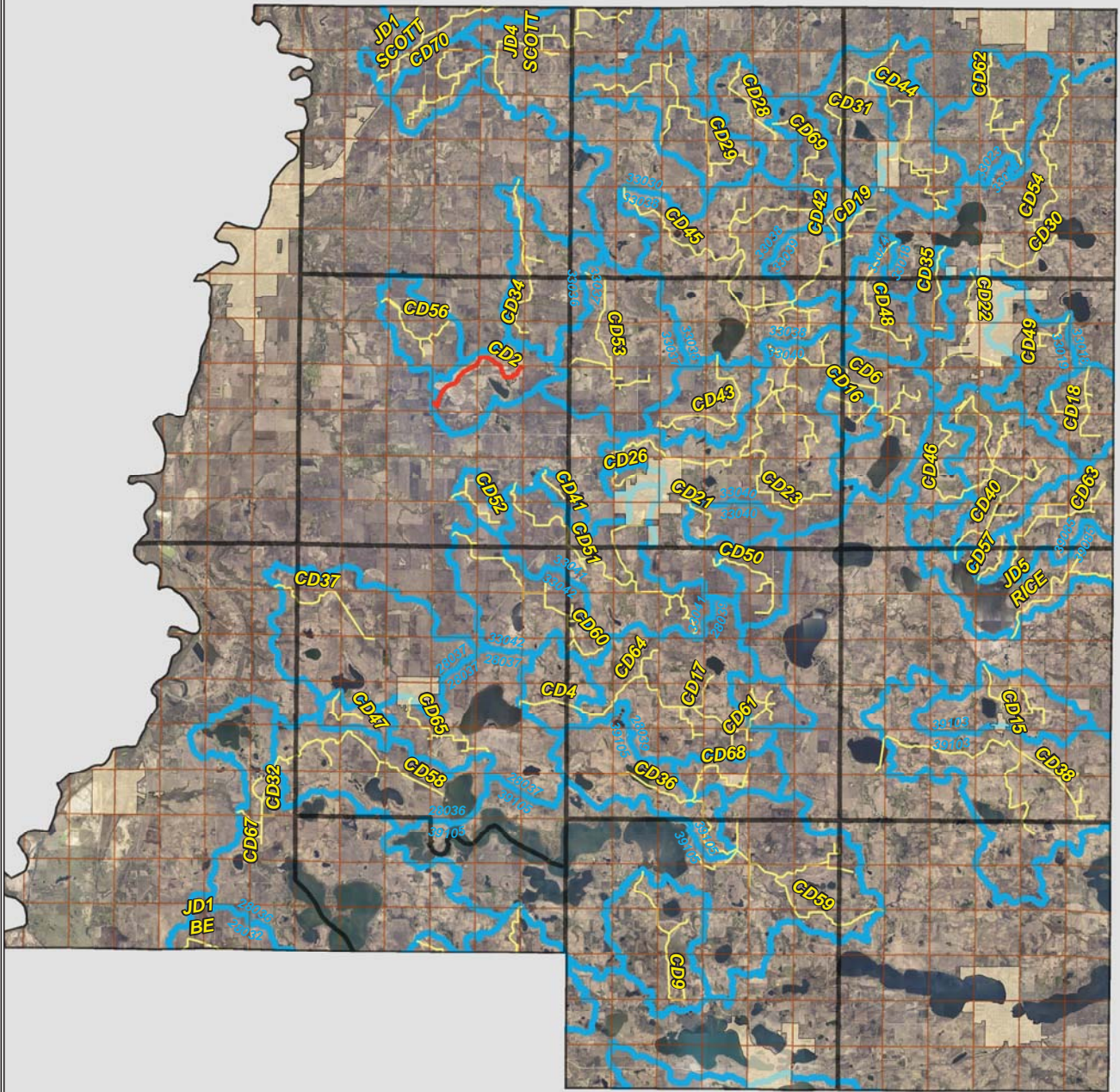


CD 2

LO PAYS FOR CULVERTS

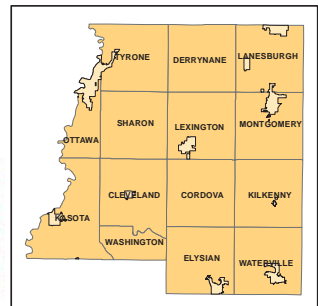


Legend

- Sections
- Cities
- Ditches**
-
-
- Ditch Watershed



N



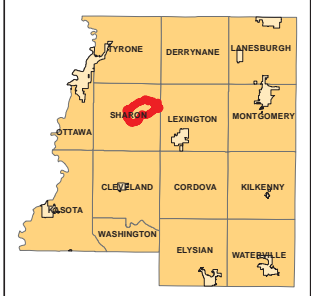
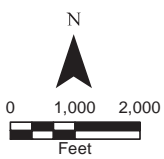
Ditch Watershed



Legend

- Sections
- Cities
- Ditches
- Ditch Watershed

Ditch ID: 33025CD2
Acres: 2117.22



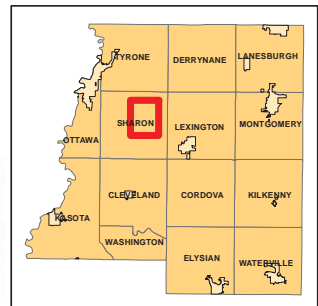
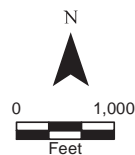
2006 Ditch Inventory



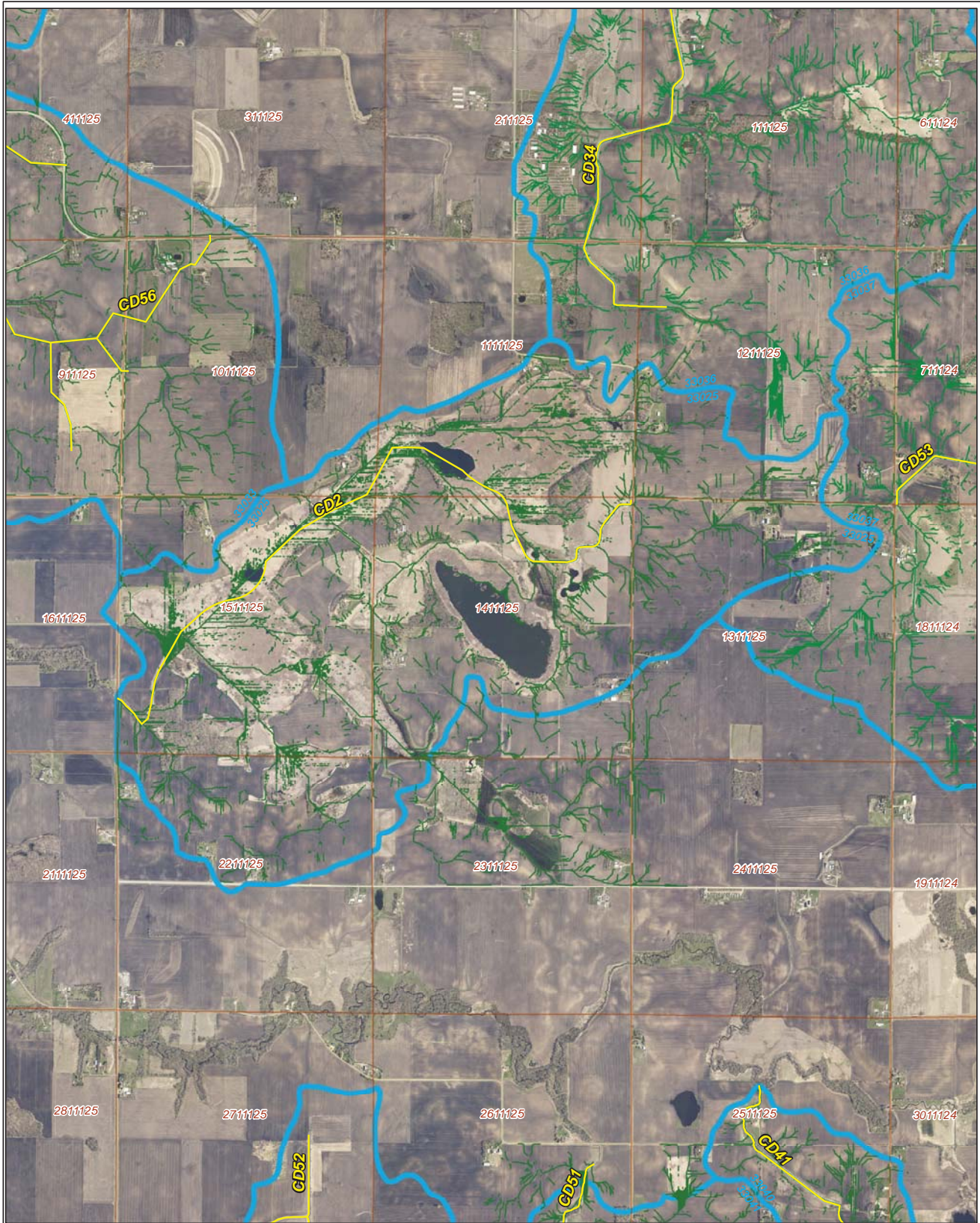
Legend

- Ditch Inventory
- Sections
- Cities
- Ditches
- Ditch Watershed






Ditch Name: CD2



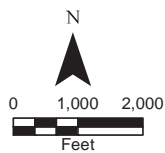
High Priority - Stream Power Index Sites



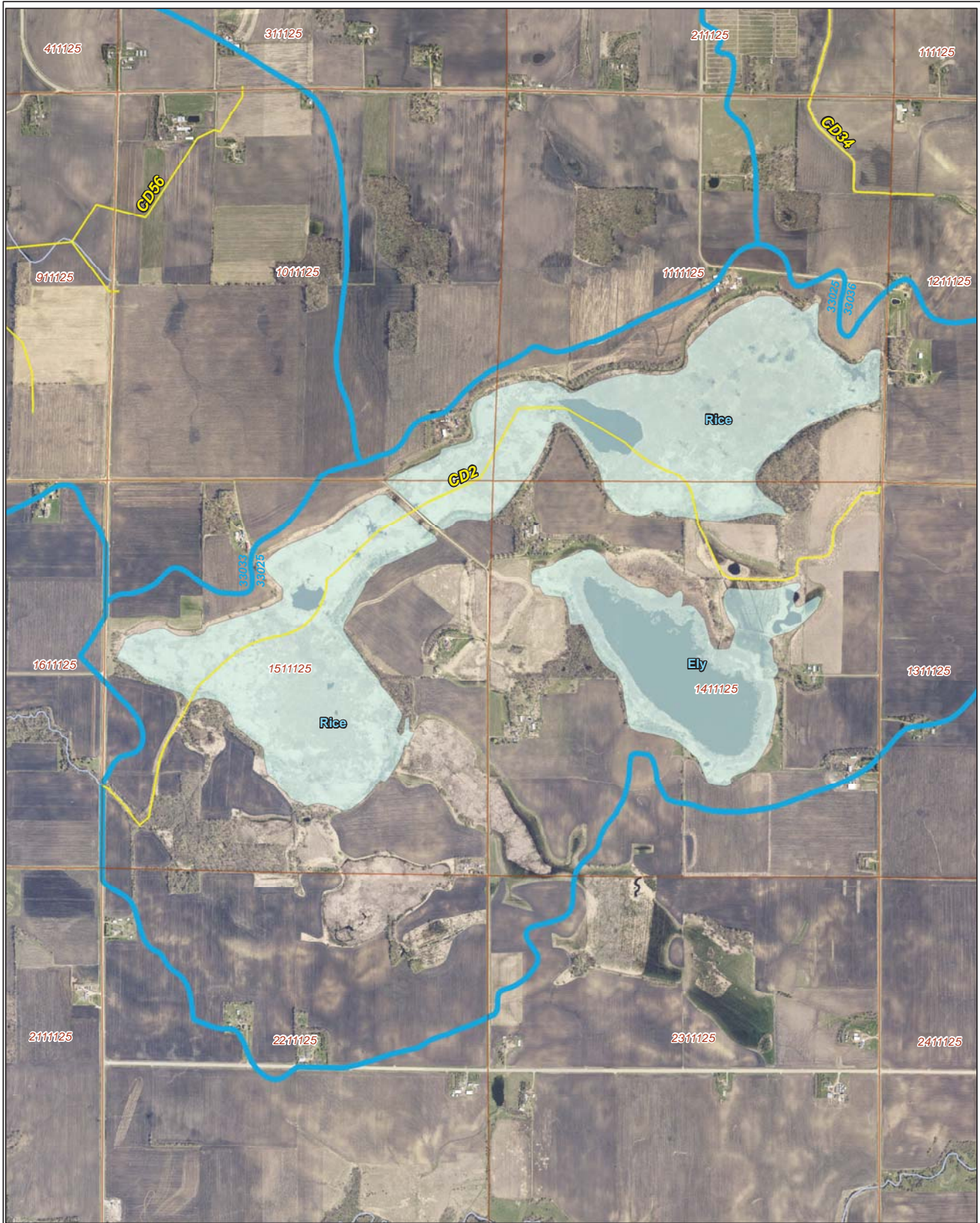
Legend

-  Sediment
-  Ditches
-  Sections
-  Cities
-  Ditch Watershed

Ditch Name: CD2

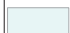







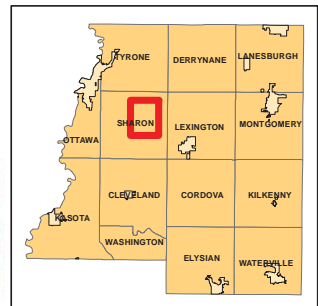
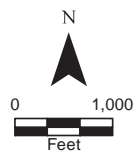
DNR Public Waters



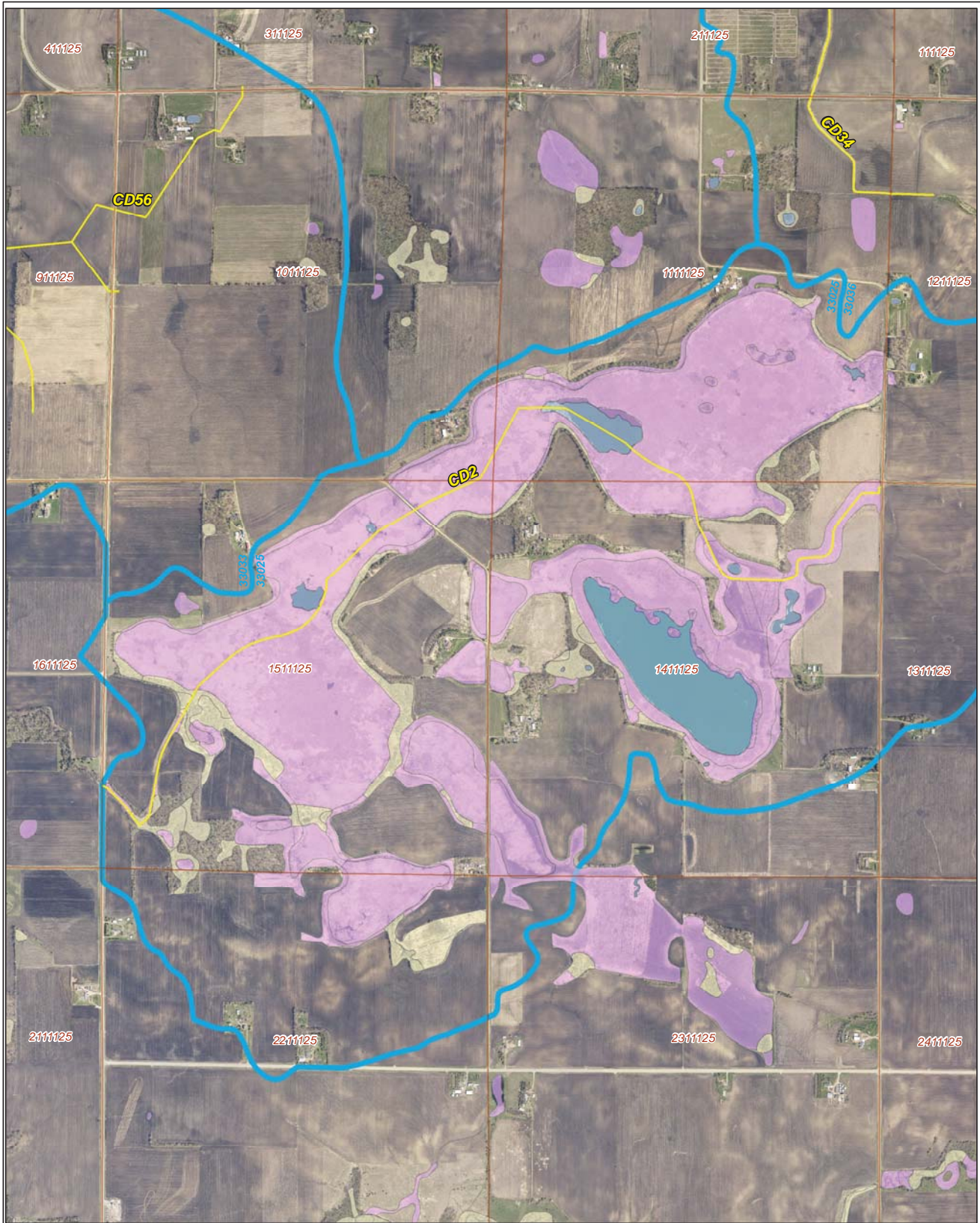
Ditch Name: CD2

Legend

-  DNR Public Lakes and Basins
-  DNR Rivers and Streams
-  Sections
-  Cities
-  Ditches
-  Ditch Watershed

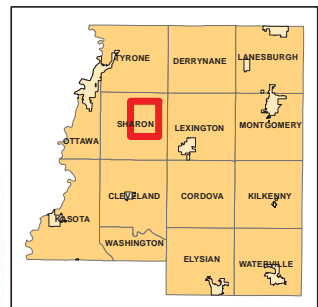
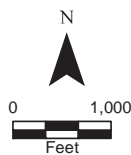


2015 Wetland Inventory

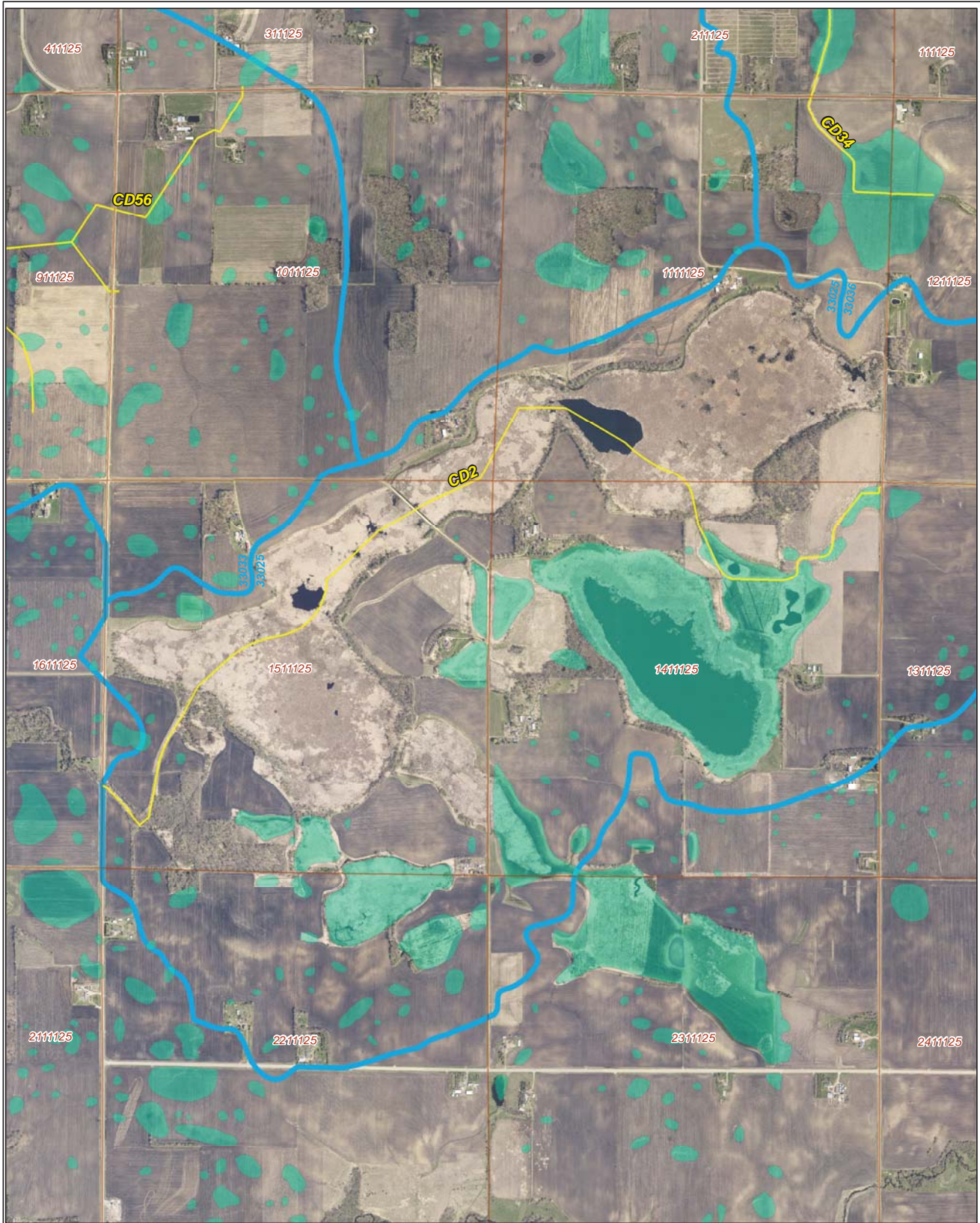


Ditch Name: CD2

Legend	
Wetland Type	
	Freshwater Emergent Wetland
	Freshwater Forested/Shrub Wetland
	Freshwater Pond
	Lake
	Riverine
	Sections
	Ditches
	Ditch Watershed



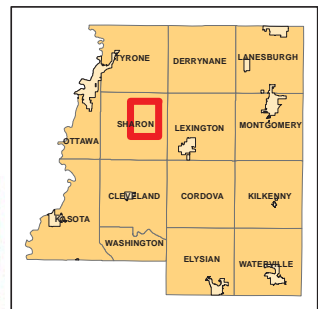
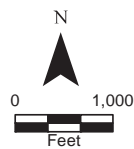
Restorable Wetlands



Ditch Name: CD2

Legend

- Retention Locations
- Sections
- Cities
- Ditches
- Ditch Watershed



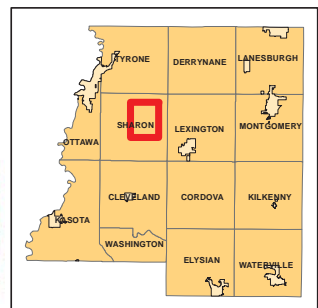
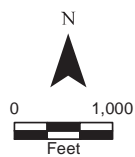
Ditch Buffer



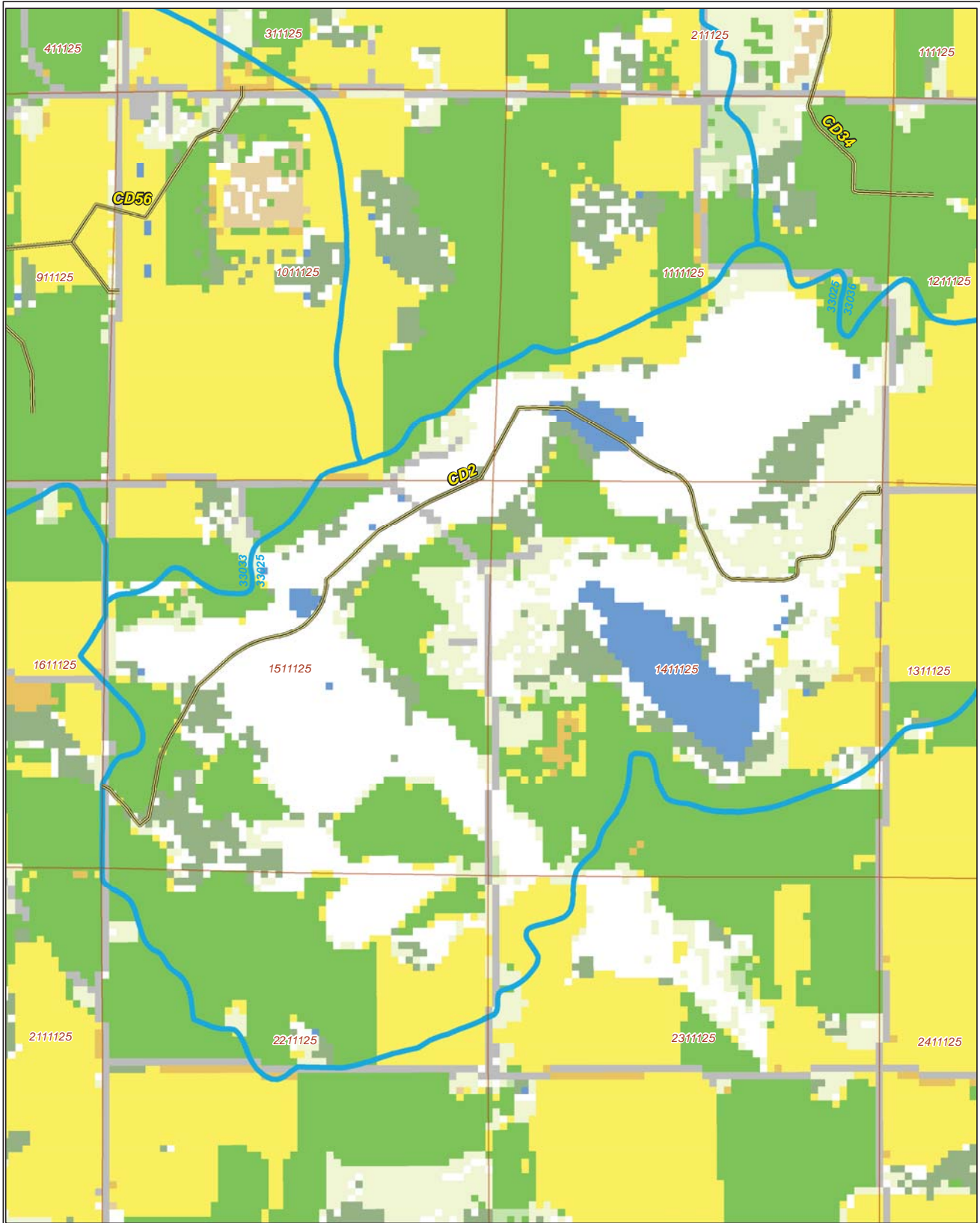
Legend

-  Ditches
-  Needs Buffer
-  Sections
-  Cities
-  Ditch Watershed

Ditch Name: CD2
Percent Buffered: 95.62%



2015 Crop Coverage



Ditch Name: CD2

Legend	
Coverage Type	
Open Water	Sections
Alfalfa	Cities
Corn	Ditches
Forest	Ditch Watershed
Developed Area	Other Hay/Non Alfalfa
Grass/Pasture	Peas
Soybeans	Spring Wheat
Sweet Corn	



N

