



# Le Sueur County

## Soil and Water Conservation District

### 2022 Annual Report

(1/1/2022-12/31/2022)



**181 W. Minnesota St., Le Center, MN 56057**

**507-419-0365**

**[www.lesueurswcd.org](http://www.lesueurswcd.org)**



## A Year In Summary

2022 was a successful year for the Le Sueur County Soil and Water Conservation District (LSC SWCD). The SWCD completed a five year strategic plan to identify SWCD priorities. The SWCD mission statement was also reviewed and changed to the following: *The mission of the Le Sueur County Soil and Water Conservation District is to educate and assist the public in land and water conservation.* This change aligns with current SWCD responsibilities.

One Watershed One Plans are starting to gain traction. LSC SWCD completed it's first projects in the Cannon River Watershed in 2022. The Lower Minnesota River East Watershed held a public kick off meeting to inquire about resource concerns in the watershed. Since the kickoff meeting staff and partners have been working on writing the plan. The plan is scheduled to be completed in 2024.

In 2022, The SWCD was awarded a \$408,000 pilot water storage grant for a unique water storage project in the Lake Washington Watershed. The pilot project is part of a new initiative the Governor proposed in his 2021 budget. The SWCD is currently in the final design stages of the project.

2022 LSC SWCD completed several projects. The SWCD installed **\$435,397** in structural projects, **\$16,984** in CREP Easement Construction, **\$31,420** in non-structural practices such as cover crops and completed **\$191,556** of county drainage construction work through the SWCD Drainage Inspector.

Below, District 3 Supervisor Glendon Braun of rural Le Sueur, MN resigned as our SWCD Board member in October. Braun had served on the SWCD Board since 1966.





# Education & Outreach

## SWCD Strategic Planning Event

In March 2022, the LSC SWCD Board of Supervisors and Staff held a Strategic Planning session to establish goals for the next 5 years (2022-2027).

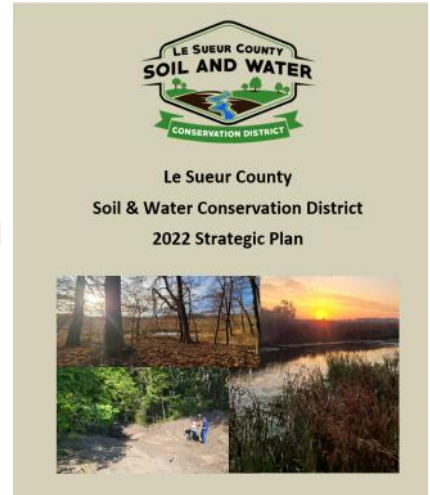
The session was a first of its kind for the LSC SWCD and will be considered a starting point for future planning efforts. The session identified short and long term goals, office goals, threats, weaknesses, opportunities and strengths.

The SWCD will continue to review this document as a basis to show success and to continue to deliver the mission for the LSC SWCD.

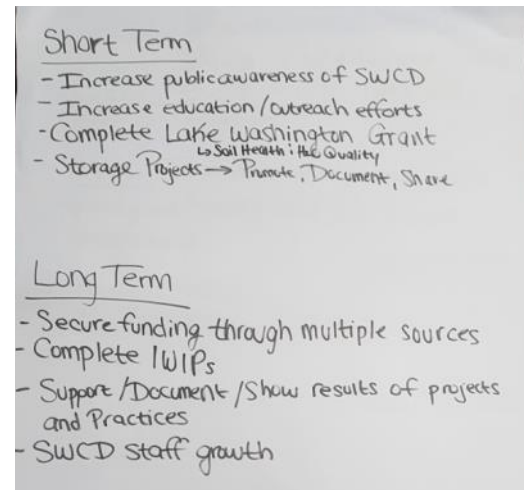
The SWCD created an updated mission and vision statements:

**Mission:** *The mission of the Le Sueur County Soil and Water Conservation District is to educate and assist the public in land and water conservation.*

**Vision:** *To improve and protect water quality and healthy soils for future generations.*



**Above: Created Planning Document**



**Left: Holly Kalbus, LSC Environmental Planner facilitating the meeting for LSC SWCD Board and Staff.**

**Right: Information gathered from Board and Staff to work on Strategic Plan.**

**Below: Staff & Board participating in one of the sessions.**



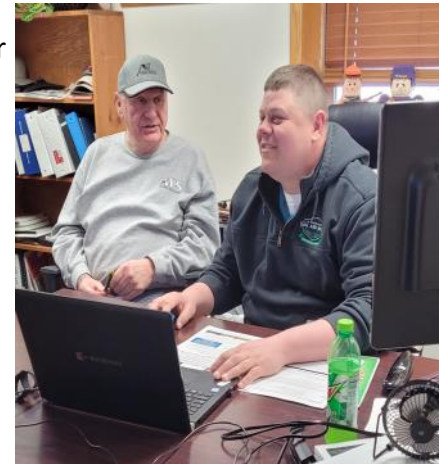


## Education & Outreach

### SWCD Legislative Days

In 2022 the SWCD Participated in the Minnesota Association of Conservation Districts Legislative Days. The focus of the event was to address dedicated state funding for SWCDs in the form of SWCD Aid. The effort was unsuccessful in 2022, but ground work for the priority was created for future efforts to obtain stable state funding for all SWCDs. Staff and Board Members met virtually with local legislators:

- Rep. Brian Pfarr
- Rep. Sue Akland
- Rep. Todd Lippert
- Sen. Julie Rosen
- Sen. Nick Frentz
- Sen. Rich Draheim



*Right: SWCD Chair Jim Struck with District Manager Mike Schultz meeting virtually with Legislators. Below: MASWCD Legislative Event photos.*



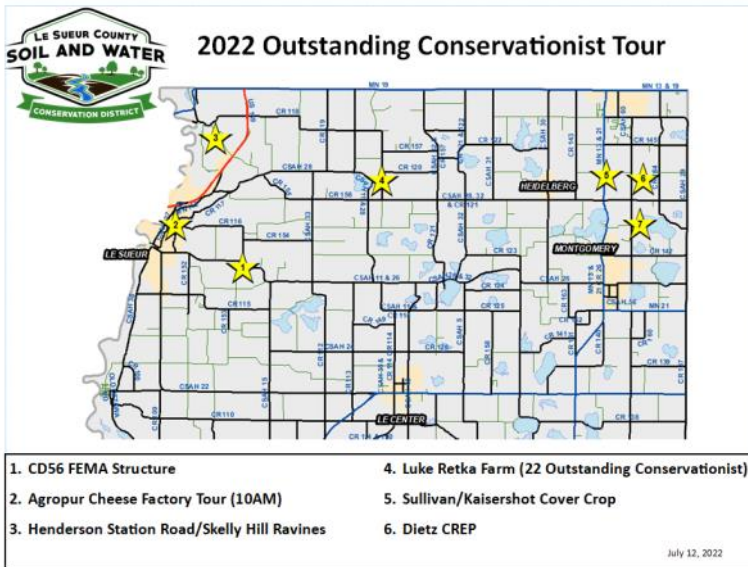


# Education & Outreach

## SWCD Board Conservation Tour

The SWCD Board and staff held their Conservation Tour in July 2022. The tour focused on the northern part of Le Sueur County. The majority of the tour was held at the Agropur Cheese Factory in Le Sueur where the history and how the operation works was presented by the facility manager. Other stops along the tour were the Retka CREP site near St. Thomas, cover crops sites near New Prague and a completed CREP construction site.

*Below: Tour photos from inside Agropur Facility*



*Above: Map of the conservation tour sites. Bottom Left: SWCD District Technician Joe Jirik talking about cover crops. Bottom Right: SWCD Board and Staff at Agropur learning about how the facility works and how they process their byproduct for clean water purposes.*





## Education & Outreach

### Local Lawmakers Tour Conservation Projects in the Cannon River

This past July, twenty-four local lawmakers and staff from six different counties and Soil and Water Conservation Districts (SWCDs) took a tour of conservation activities being implemented in the Cannon River Watershed. The conservation activities are a result of the Cannon River Comprehensive Water Management Plan and were organized by the Cannon River Watershed Joint Powers Organization (CRWJPO).

The CRWJPO was created to develop and implement the Cannon River Comprehensive Watershed Management Plan, which is a single management plan for the watershed, that will guide the



CRWJPO for the next ten years. Prior to the CRWJPO, each individual local government was responsible for water planning.

Members of the CRWJPO include six counties, six SWCDs, one watershed district, and one watershed management organization. The members work together to address the most significant threats to water resources and implement strategies that provide the greatest benefit to the watershed.

There are a wide variety of land uses across the watershed and therefore priority activities are different. The tour was held to

show local officials the variety of activities and how they will help improve the local water quality in the watershed.

At the first stop of the tour at a home on Gorman Lake in Le Sueur County, officials learned about septic system inventories of several Le Sueur county lakes in the watershed. Holly Kalbus, Le Sueur County Environmental Resources Specialist, and Amy Beatty, Le Sueur County Environmental Programs Specialist, explained how the septic systems were inventoried around the lake and then tested to see if they were compliant.

Article from: [www.riceswcd.org/crwjpo](http://www.riceswcd.org/crwjpo)





## Education & Outreach

### SWCD Trainings/Meetings



*Left: SWCD Participated in Shoreland Trainings with Le Sueur County Planning and Zoning that was open to the Public.*

*Right: SWCD Technical staff attended the Area 6 Technical Training Team meeting in Mankato in June to discuss training needs throughout the area. Ryan Jones Technical Service Area Engineer is presenting to all SWCD Technical Staff.*



*Below: SWCD Staff participated in CPR/AED Training in March.*





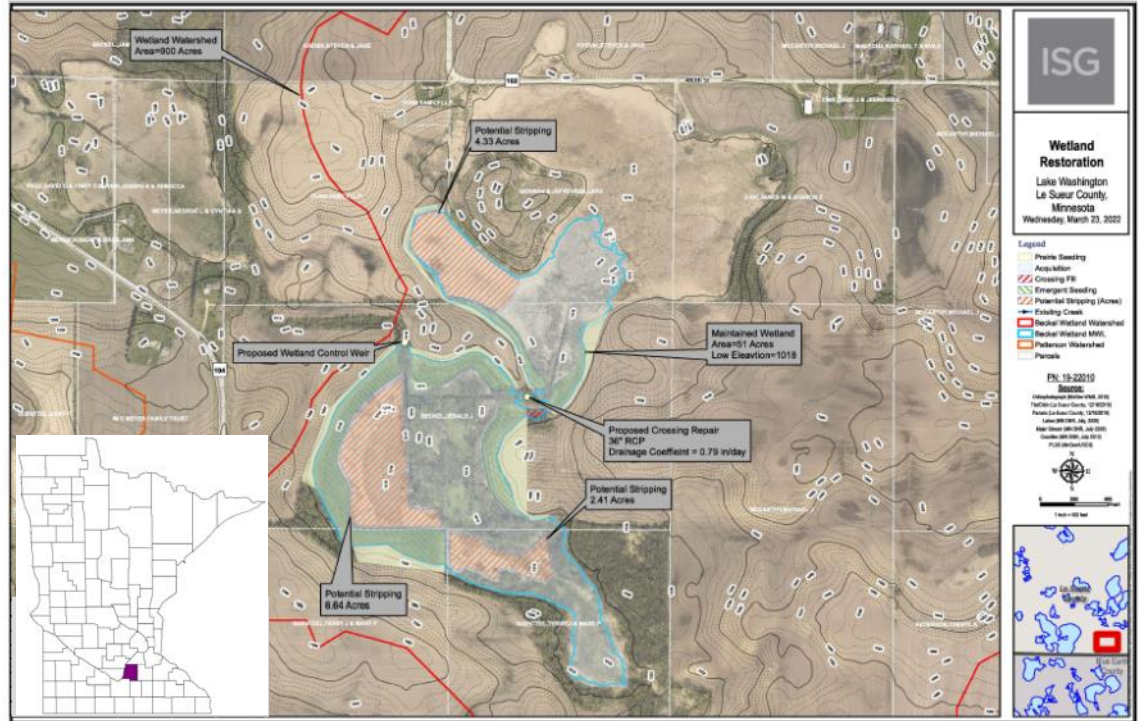
## Education & Outreach

### Le Sueur SWCDs Pilot Water Storage Solutions through New Grants

As part of a new grant through the Board of Water and Soil Resources (BWSR) to address the impact of intense rainfall events, the Le Sueur SWCD was recently awarded funding to complete a water storage project.

In 2021, the Minnesota Legislature appropriated \$2 million in grant funding for BWSR to develop a water storage program.

In Le Sueur County, a strong working relationship with the Lake Washington Improvement Association helped provide the early engineering and modeling for a successful grant application. The Le Sueur



***Preliminary project design for the water storage basin that developed for the grant.***

SWCD has been active in the Lake Washington watershed in collaboration with the association, said District Manager Mike Schultz. Together, they've completed hydrological assessments and drain analysis with engineering help from ISG in Mankato and priority projects, such as installing water and sediment control features. Through this work, the Le Sueur SWCD built a rapport with a local landowner who wanted to help tackle erosion and water quality issues in the watershed but had concerns about the SWCD's existing programs. As BWSR rolled out the water storage pilot program, Schultz and the SWCD approached the landowner about the history and goals for the land. The 25-year commitment for the pilot program was a better fit than a temporary or permanent easement.

"None of these projects just show up and fit. You have to really think it through and think about how it's going to impact the landscape," Schultz said.

With the \$408,000 grant, Le Sueur SWCD will create a 50-acre storage basin utilizing a natural depression in the land. At about three feet deep, the basin will provide 150 acres of water storage. The basin will be designed to slow down and store water, allowing it to trickle out over 12 days.





## SWCD Programs

### Outstanding Conservationist

Luke and Alice Retka of Derrynane Township were chosen as the 2022 Outstanding Conservationists by the Le Sueur County SWCD Board of Supervisors.

Luke and Alice live on the Retka family farm that Luke's grandfather purchased in 1932. Growing up, Luke's family grew row crops, hogs and cattle. Luke and Alice married and raised their 2 children on the farm while continuing to raise row crops. Luke also worked off the farm at Distel Grain and did some contracting work with his cousin. Alice was a very active volunteer while their children were growing up. She worked at the local schools and the library.

The Retkas were recognized for their various conservation practices and energy saving methods they have installed. Currently they are working with the SWCD on a 52 acre CREP wetland restoration.

Luke and Alice have also enrolled land into CRP, installed erosion control practices such as terraces, decreased tillage with ridge till and established drainage ditch buffers prior to the State of Minnesota signing the Buffer Law in 2015. They have planted several acres of trees and established pollinator plantings throughout their farm.



Luke's other projects include converting 2 of his grain bins into a "sugar shack" to make maple syrup, adding a greenhouse onto the south side of their barn, and installing 6 solar panels which produce 5 times more electricity than they use.

**LUKE & ALICE RETKA**



**2022 OUTSTANDING  
CONSERVATIONIST**



## SWCD Programs

### SWCD Drill Programs

The SWCD has 2 seeders available for rent, a Dew Drop Seeder and a Truax No-Till Drill. The Dew Drop seeder is used for seeding small areas and can easily be used with an ATV, UTV or small tractor. It has an electric lift so no hydraulics are necessary to operate the seeder. Rent is \$60 per day. In 2022, the dew drop was used 3 times for a total of 4 acres.



The Truax No-Till Drill is used for planting larger areas. It can be used to plant cover crops, small grains and native seed mixes. The drill has a seeding width of 8 ft. The drill is available to rent for a minimum charge of \$120, or \$12 per acre. The rental charge includes delivery to your farm, calibration/set up and pickup of the drill when the seeding is completed. In 2022, 18 producers rented the drill totaling 167 acres.



*Above: Le Sueur SWCD using the Dew Drop Seeder to seed buffers. Below is a photo of the inside of the small seed box on the Dew Drop Seeder.*

*Left: Le Sueur County producer seeding Native Grasses with the Truax Drill .*



# SWCD Programs

## One Watershed One Plan, Cannon River

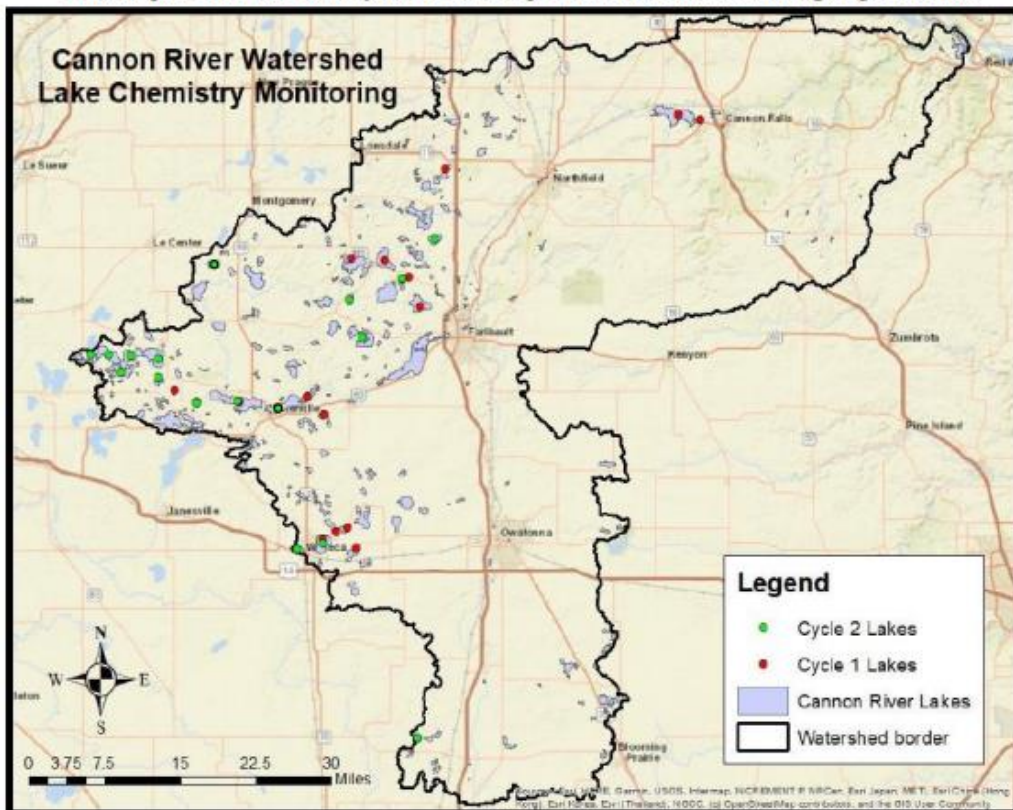
### Water Sampling Cannon River Watershed

Le Sueur County and the SWCD sampled lakes from May-September in 2022. Lake sampling is a part of the Minnesota Pollution Control Agency's (MPCA) efforts towards starting the second cycle of the Watershed Restoration and Protection Strategies (WRAPS) Report. The data that is collected from lake sampling is a critical piece in determining existing conditions of water resources, and also for prioritizing and targeting future efforts to help improve and protect those water resources.

All sample sites are considered Cycle 2, and are identified in the map located below as a bright green dot.



*All sample sites are identified in the map located below as a bright green dot.*



**Figure 13. Cycle 2 MPCA Sample Sites.**

*Photo Credit: MPCA*

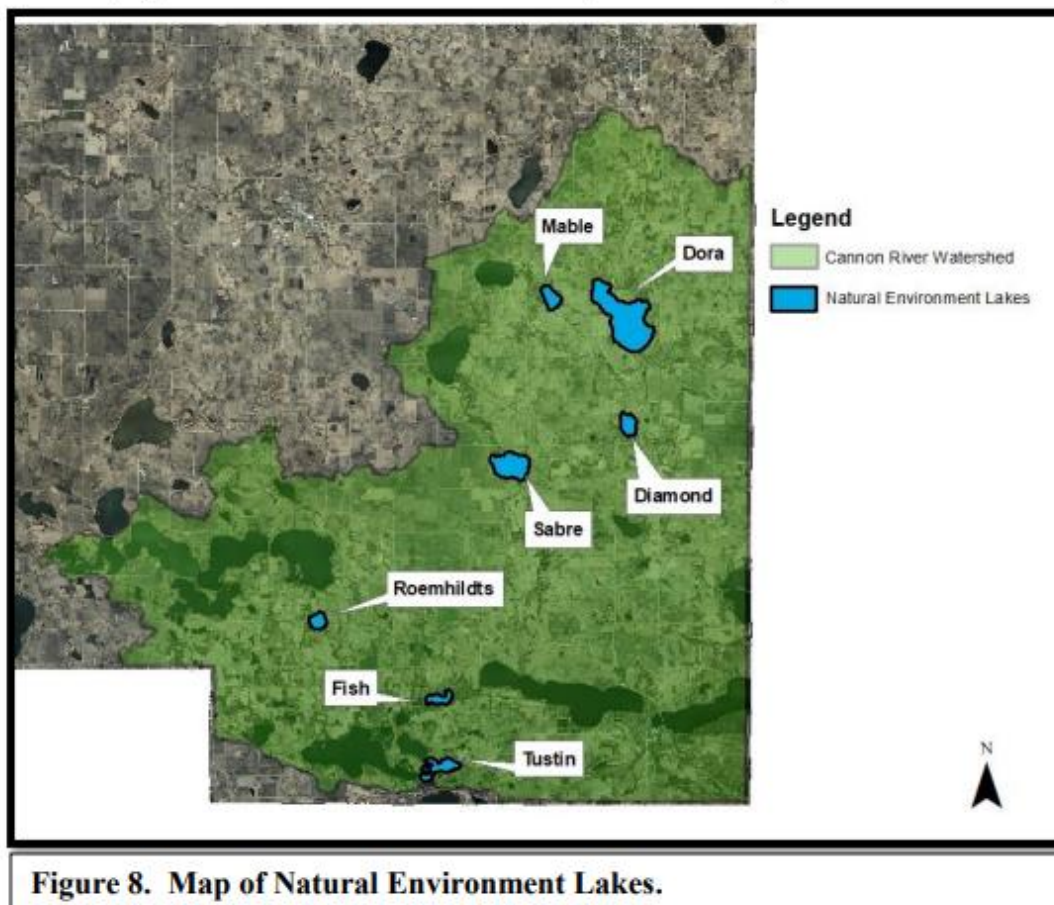


## SWCD Programs

### One Watershed One Plan, Cannon River

#### Shoreline Surveys Natural Environment Lakes in the Cannon River Watershed

The Cannon River Watershed Joint Powers Organization (CRWJPO), consisting of Counties and Soil and Water Conservation Districts (SWCDs) in the Cannon River Watershed, completed a Watershed Plan in 2020. The Watershed Plan has many action items to aid in improving water quality. One such action item is to complete shoreline surveys on 10 lakes within the Cannon River Watershed. Fish, Roemhildts, Diamond, Mable, Dora, Sabre, and Tustin are 7 of the 10 lakes identified for the survey. All of these lakes are considered Natural Environment Lakes; they are usually small and often shallow with limited abilities for integrating the impacts of development and recreational use. Often they will have lands adjacent to them that have significant limitations on development due to factors such as high water tables, exposed bedrock, and unsuitable soils (MN State Statute 6120.2500). Staff used a drone to complete the survey work this past fall. Results of the survey will show the general health of the shoreline and any potential locations for improvement projects such as shoreline restorations and native buffers.





## SWCD Programs

### One Watershed One Plan, Cannon River

#### Volney, Gorman, and Cordova Septic Inventory Project in the Cannon River Watershed

Le Sueur County received Watershed Based Implementation Funding from the Cannon River One Watershed One Plan in order to conduct a septic system compliance inventory around Volney and Gorman Lakes as well as the Village of Cordova. The intent of the Septic Inventory is to determine how many systems are compliant and noncompliant. Those systems that are noncompliant would be required to update their septic systems. Failing septic systems negatively impact surface water resources, groundwater resources, and public health. Le Sueur County hired Stantec Consulting Services Inc to assist the County with completing the inventory.

There were multiple phases of this project. The first phase was to raise public awareness about the project through public meetings as well as adopt a local County Ordinance to launch the Septic Inventory Project.

The second phase of the project was to determine the project area for the inventory, send out letters to property owners who needed a compliance inspection, and complete the compliance inspections. The final phase of the septic inventory project was to send out letters to each property owner to notify them if their system was considered noncompliant or compliant and host a public meeting about the final findings of the project.

Any property owners whose system was deemed noncompliant, would be required to update their septic system. Timelines to update will differ for property owners depending on their system's noncompliance status (Imminent Public Health Threat or Failing to Protect Groundwater).

There was a total of 70 systems that were required to have a compliance inspection. Out of the 70 systems, 39 systems or 56%, were deemed noncompliant.

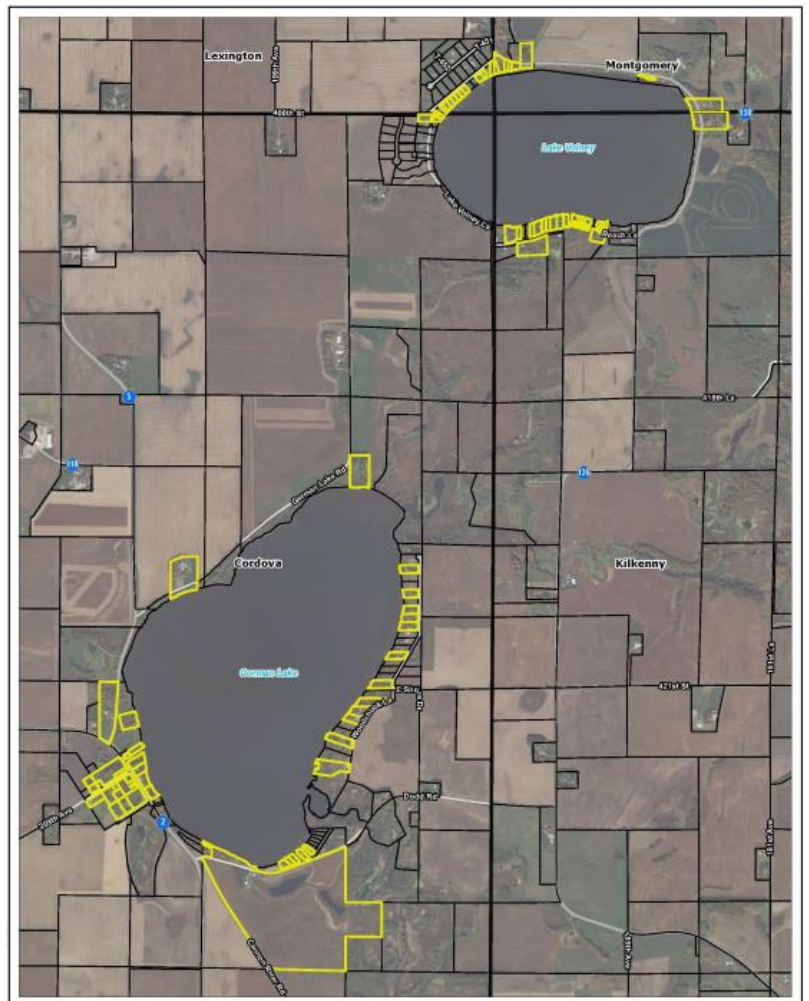


Figure 2. Volney, Gorman, and Cordova Septic Inventory Project Area

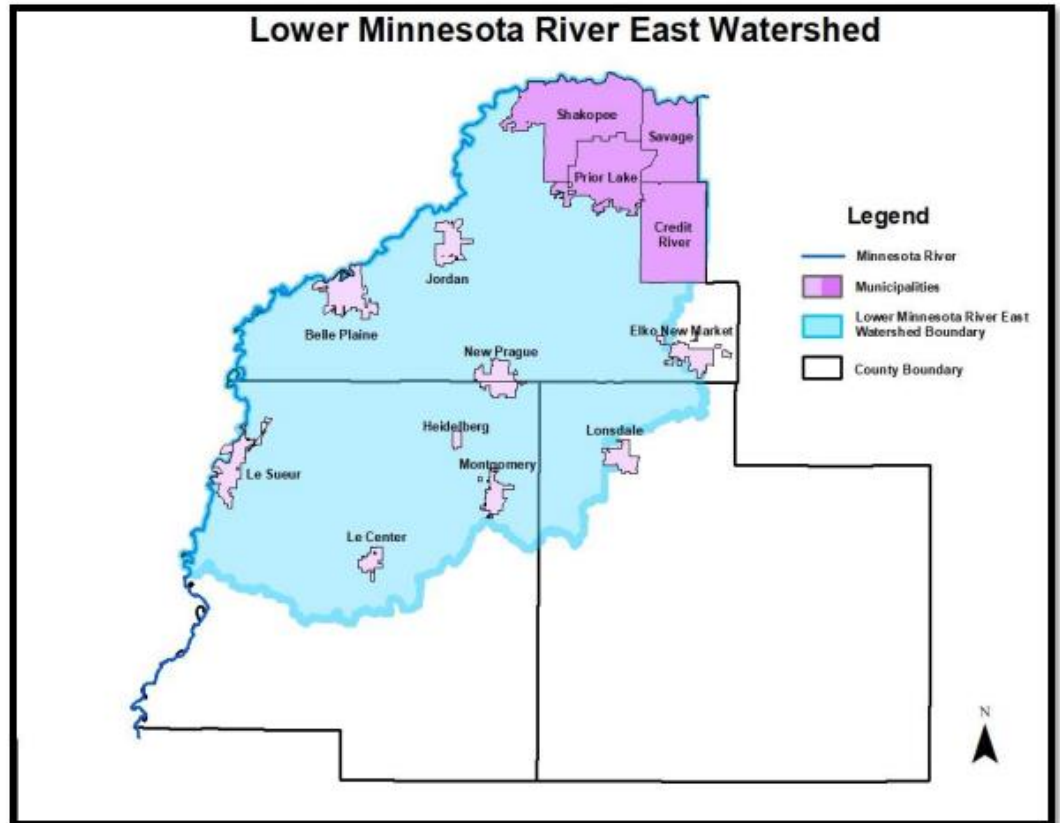
Photo Credit: Stantec Consulting Inc.



## SWCD Programs

### One Watershed One Plan, Lower Minnesota East

The Lower Minnesota River East Partnership officially began in 2022 when the work plan was approved. The planning efforts are now fully underway. In July, a public kickoff meeting was held at Cedar Lake Park in Scott County. Information was gathered to be used to guide the group in creating the One Watershed One Plan document. Staff are currently in the early stages of the plan with an expected completion timeline of summer 2024.



*Lower Minnesota River East Watershed Map*



*SWCD Staff Meeting with the Public at the Public Kickoff Meeting from Cedar Lake Park.*



## SWCD Programs

### Wetland Conservation Act

Le Sueur SWCD is the Local Government Unit that oversees the Wetland Conservation Act (WCA) on behalf of Le Sueur County. 2022 was a busy year for wetland inquires. WCA workload was similar to the previous year.

- 71 landowners consulted the SWCD on WCA issues
- 11 WCA applications were approved
- 1 WCA application was rescinded
- 28 potential WCA Violations were investigated
- 1 Wetland bank was approved
- 6 Wildlife Pond Requests



*A WCA violation site where a landowner installed tile in a wetland.*

### Minnesota Agriculture Water Quality Certification Program

The MN Ag Water Quality Certification Program's goal is to protect and enhance water quality within Minnesota's agricultural lands by working with farmers and landowners to promote stewardship.

Le Sueur County SWCD partnered with the MN Department of Ag and began administering this program in 2019. Le Sueur County SWCD currently has 14 landowners enrolled into the program. Staff are currently working with 4 individuals that have shown interest in the program and plan to complete additional outreach in 2023.

Certified farms receive a 10 year exemption from any new water quality regulations and can obtain financial assistance to implement practices that promote water quality. They also receive a sign to display their accomplishment and may promote their business as a MN Ag Water Quality Certified business.





## SWCD Programs

### Tree Program

In 2022, over 7000 new trees and shrubs were planted in Le Sueur County as a result of the annual SWCD tree program. A variety of hardwoods, potted evergreens and shrubs were available. Species such as oaks, maples, aspen and birch to shrubs like lilac, dogwood and plum were all available for purchase. The SWCD also added 2 new varieties of hardwoods; Rubrum Maple and Autumn Blaze Maple. Also added was 1 new shrub, Golden Currant.

The SWCD District Technician assisted landowners with planning and designing new windbreaks on their properties and worked with Le Sueur County residents on replacement varieties favorable for old shelterbelts.



*SWCD District Technician leaving with the tree planter and a load of trees for a Le Sueur County resident.*

### Plant Kits

For the first time in 2022 the LSC SWCD offered native plants kits. The kits consisted of 36 individual plugs and 6 different species. SWCD offered a variety of kits to plant in different soil conditions ranging from wet to dry and sun to shade. 22 kits were sold in 2022.



*Native plugs planted in an urban pollinator plot.*

### Food Plots

In partnership with the Le Sueur County Pheasants Forever Chapter, the SWCD gave out 32 acres worth of food plot corn, 8 acres of Soybeans and 4 acres of Sorghum to 15 landowners. The Le Sueur SWCD has been in partnership with the local PF Chapter since the 1990s.



*Le Sueur County Food Plot In September with seed from Le Sueur County Pheasants Forever.*





## SWCD Programs

### Cost Share Program

SWCD staff had consistent work throughout 2022 with 6 construction projects dispersing **\$33,400** in project funds. The following projects were completed:

- 8 Water and Sediment Control Basins
- 1 Grade Stabilization Structure
- 1 Well Sealing



*Construction phase photos from three different project sites.*





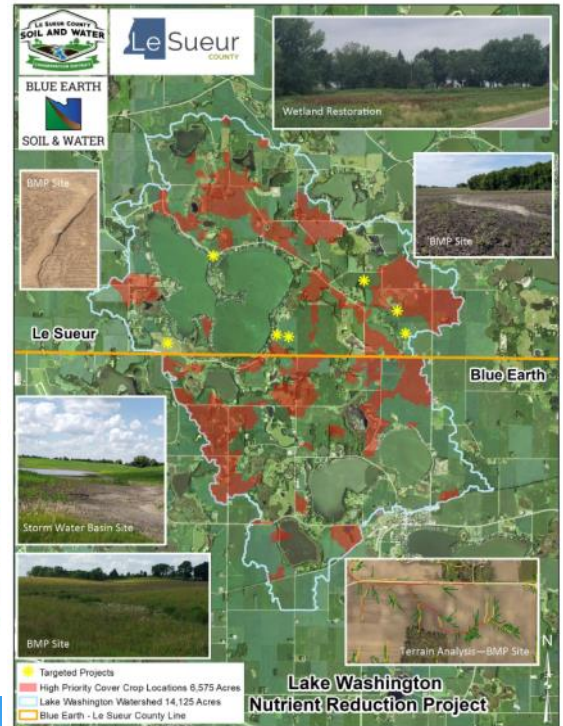
## SWCD Programs

### Lake Washington Nutrient Reduction Project

In 2020, the Le Sueur County SWCD was awarded \$310,250 from the Minnesota Board of Water and Soil Resources to address resource concerns in the Lake Washington watershed. These resource concerns were targeted in partnership with Le Sueur County and the Blue Earth SWCD. The Lake Washington Improvement Association pledged to pay all of the matching funds needed for the grant in the amount of \$77,563. They have provided much needed support of the project and partnership. A total of \$139,920.25 has been spent to date in the Lake Washington Watershed with one year remaining in the grant.

#### Projects Completed to Date:

- 9 Water and Sediment Control Basins
- 4 Critical Area Planting Sites
- 5 Wetland Restorations



*Construction photos from the wetland restoration site, left is an embankment and right is a water control structure.*



## SWCD Programs

### Multipurpose Drainage Management Grant CD 61

In 2022 the Le Sueur SWCD in partnership with Le Sueur County wrapped up a project where the SWCD secured a \$215,541 Multipurpose Drainage Management Grant through the Minnesota Board of Water and Soil Resources Clean Water Fund. The project is part of a County Ditch Improvement that identified this location for a Storage and Treatment Wetland. Landowners on the ditch system filed a petition to improve the ditch that included the storage and treatment site.

One of the petitioners offered his land in the upper watershed. The site is 31.1 acres in size. Of that 31.1 acres 15.4 acres will be the restored wetland and 15.7 acres will be an upland buffer planted to native vegetation.

Construction on the project started in the Summer of 2021 and was completed in the summer of 2022. The project will provide 76.56 T/yr of sediment reduction, 52.55 T/yr of estimated soil savings, and 170.02 lbs/



*CD 61 storage and treatment wetland weir structure*



*CD 61 storage and treatment wetland aerial photo late fall 2022*

yr of estimated phosphorus reduction which will help address the sediment and nutrient reduction needs for Scotch Lake located downstream. A calculated 17.2 acre/feet of water will be stored by the 15.4-acre wetland restoration and will treat the 535 acre watershed.





## SWCD Programs

### Cover Crops

#### 2022 SWCD Cover Crop Program

- 1101 Total Acres Seeded
- 262 Acres Applied by High Clearance Seeder
- 397 Aerial Applied Acres
- 442 Acres Drilled or Broadcasted after Harvest
- 6 Producers Planted Green into Standing Rye



*Drilled Cereal Rye in Spring of 2022*

#### Soil Health Meetings

- The Cannon River Joint Powers Board hosted a soil health workshop in partnership with Le Sueur SWCD and Clean River Partners.



*No-till Beans into Cereal Rye*



*Drilled Cover Crop After Soybean Harvest*

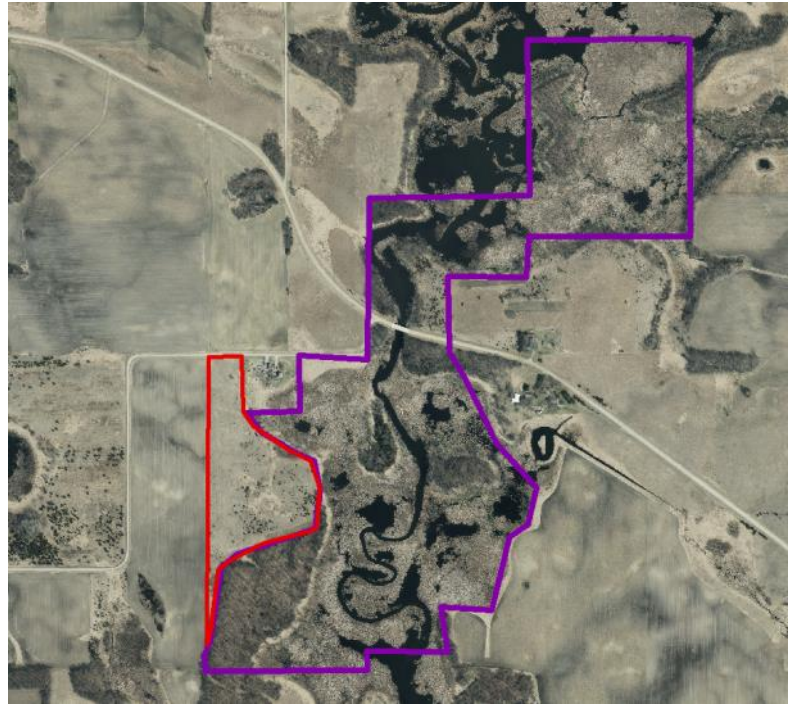


## SWCD Programs

### Conservation Partners Legacy Grant MN DNR

In the spring of 2021, the SWCD was awarded a \$34,903 Conservation Partners Legacy (CPL) Grant through the Minnesota Department of Natural Resources. In the fall of 2021 the brome was cut and baled, and the trees were removed in preparation for farming in the summer of 2022. Planning for a fall 2023 native grass seeding, soybeans were planted by a local farmer in 2022. Planting a cash crop helped our goal of eradicating the smooth brome that dominated the 23 acres prior to the start of the restoration.

The SWCD is hoping to close the grant out in 2023. Oats will be planted this summer to continue seed bed prep. This fall, the site will be dormant seeded to natives and the wetland restoration will be completed.



**Red: CPL Project Area Purple: Murphy WMA**



*Trees and stumps were burned after removal*



*Soybeans Summer 2022*



# SWCD Programs



## Walk-In Access

Walk-In Access (WIA) is a voluntary program that compensates landowners to allow public access for hunting on their land from September 1st through May 31st. With the number of hunters diminishing in the past decades, largely due to the lack of quality hunting land, the WIA program is more important than ever. A decrease in hunters means less support for wildlife and habitat; which in turn will have a negative effect on local wildlife populations. The WIA program will help sustain future generations of hunters while creating more local hunting opportunities. Le Sueur County currently has 3 parcels enrolled in the Walk-In Access program. Le Sueur County SWCD works with landowners to enroll land into the program.



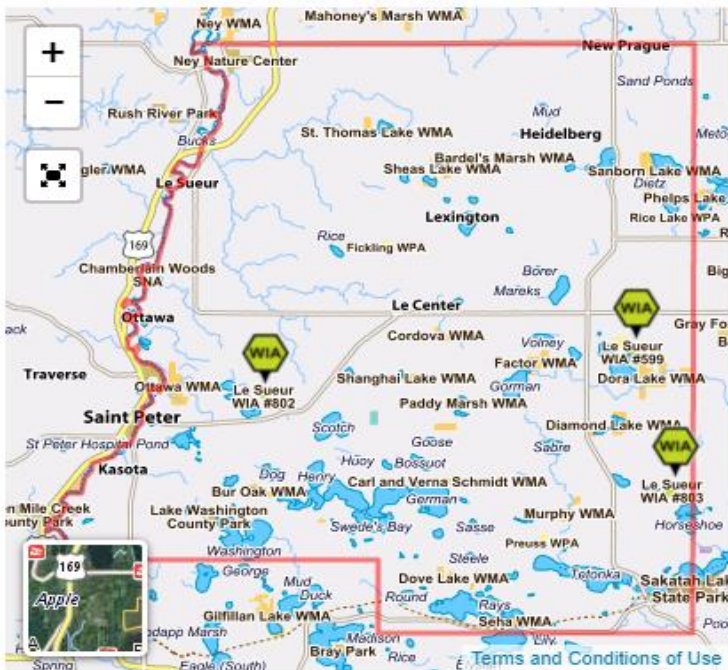
*103.04 acres located in Cleveland Township*



*110.7 acres located in Kilkenny Township*



*69.05 acres located in Kilkenny Township*



**Yellow: Locations of WIA sites in Le Sueur County**

[Terms and Conditions of Use](#)



# SWCD Programs

## Conservation Reserve Enhancement Program (CREP)



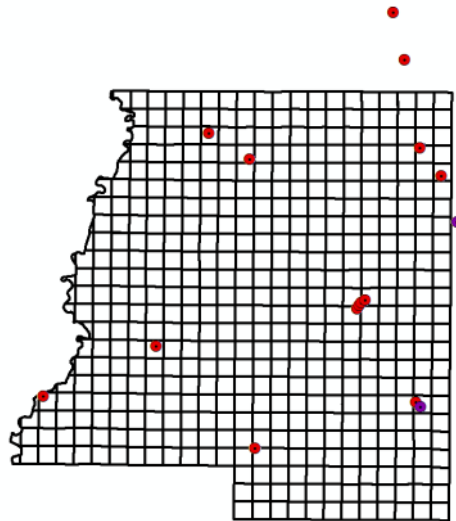
*Left: 140.07 acre wetland restoration located in Helena Township section 9. (Scott County)*



*Above: 36.41 acre wetland restoration located in Kilkenny Township section 35.*



*Above: 15.41 acre wetland restoration located in Tyrone Township section 14.*



*Above: 32.45 acre wetland restoration located in Kilkenny Township section 35*



*Left: 91.74 acre wetland restoration located in Kasota Township section 32.*



*Left: 72.45 acre wetland restoration located in Erin Township section 7 (Rice County)*

Above in **Red**: In 2022 the Le Sueur County SWCD recorded 4 CREP easements, totaling 243.63 acres. These acres included 4 wetland restorations.

Above in **Purple**: 2 CREP easements that are in the process of being recorded, totaling 108.86 acres. These projects include 2 wetland restorations .

Beginning in April 2023 there will be another CREP sign up period. Landowners in Le Sueur County continue to show interest in the program and the SWCD office expects to submit more applications this coming spring.



## 2021 Completed Projects

### CREP Wetland Restorations

In 2022, one CREP wetland restoration was completed. The project was located in Kilkenny Township. A total of 32.45 acres of wetland habitat were restored including 2 wetland basins. Construction consisted of scrapes and tile breaks.



*Wetland Scrape completed on a CREP site*

*Tile Break completed to stop any future drainage from a wetland basin.*





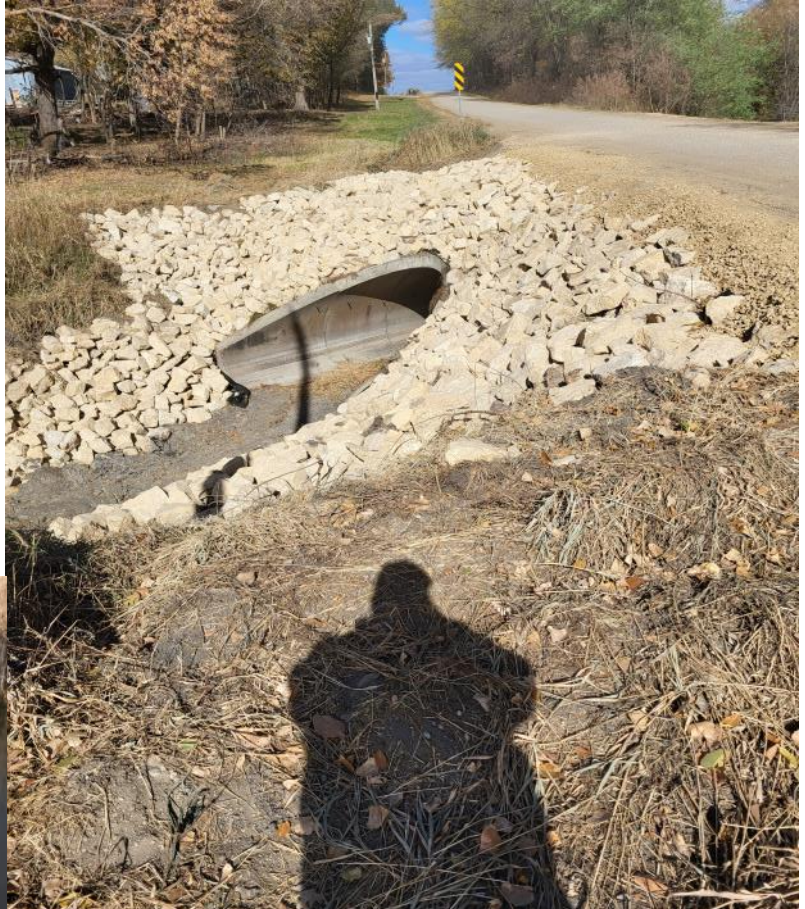


## Ditch Inspector

### Drainage Ditches

The ditch systems had another busy year completing roughly 18 projects. Projects included: ditch cleanings, repairing bank sloughs, replacing culverts, repairing farm crossings, trapping beavers and removing beaver dams.

In 2022 the ditch system continued the process of spraying and mowing 1/3 of the county ditches. The program helps to alleviate woody and noxious weeds in the ditch buffer. Between 2019 and 2022 the County has sprayed and mowed every ditch system.



*CD37 Culvert repair and armor project in Cleveland Township.*



*JD54 A cleaned out dam located in Cordova Township.*

In 2022 the Le Sueur County Drainage Authority initiated \$1,201,357 of work throughout the drainage systems on improvements and engineered repairs, while the Ditch Inspector oversaw \$191,556 of construction work. All drainage systems incurred costs were from repairs, engineer reports, correction of records, redetermination of benefits, ditch spraying/mowing, general inspections and labor. Some ditch system expenses were supplemented by grants and federal funds.



## County Ditches/ Buffer Compliance



### State Buffer Law & Compliance

In 2015, Minnesota established a State Buffer Law that requires perennial vegetative buffers of 50 feet along lakes, rivers and streams and buffers of 16.5 feet along county ditches. These buffers help filter out phosphorus, nitrogen and sediment. The deadline for implementation of buffers on public waters was November 1, 2017. The deadline for public ditches was November 1, 2018

In 2022, the Le Sueur County SWCD completed field checks and staked non-compliant parcels in an effort to get to 100% compliance with the Minnesota Buffer Law. The SWCD will be monitoring the public water and county ditch buffers at least once every three years. Le Sueur County is currently 99% compliant on public waters and 90% compliant on County Ditches.



*Established Ditch Buffer in Le Sueur County*



## 2021 County Ditches Projects

### County Ditch 29 Peat Fire

In November 2022, a wild fire started along County Ditch 29 and spread for a mile along the county ditch. The ditch banks are made up of primarily peat. Peat is an accumulation of partially decayed vegetation or organic matter. Once peat is ignited it can smolder for many months or years if it is not suppressed. Le Sueur County asked for aid from the DNR and through working together the peat fire was suppressed. There is still some damage left from the peat fire that will be repaired in the spring of 2023.



**Above: Peat smoldering under the snow. Below: The excavated burning peat.**





## 2022 County Ditches Projects

### County Ditch 15

The Drainage Inspector approved a substantial ditch cleanout on County Ditch 15. Because of the dry weather, access to wet areas became possible to aid in cleanouts.



*Left: Located in Kilkeny Township. County Ditch 15/*

### County Ditch 43

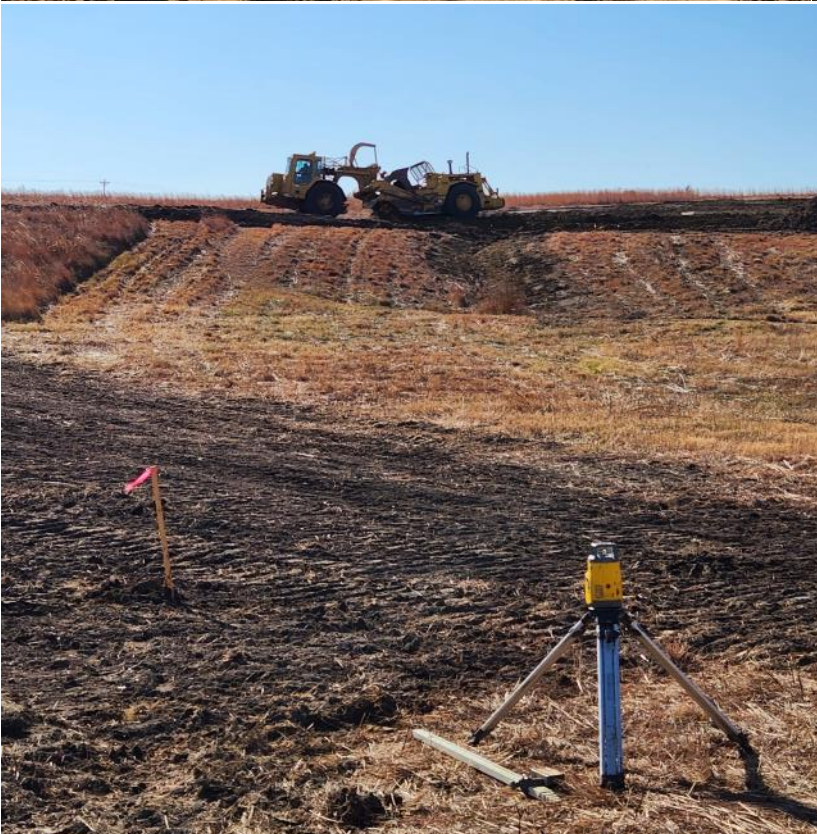
CD43 completed a repair project that was started in the fall of 2021. This project included a ditch cleaning, slough repairs, vegetation removal from Tyler's Lake, three culvert replacements, a Hog-Slat structure approved by the DNR at the outlet of Tyler's Lake and a dam replacement on the outlet of Clear Lake. The repairs were completed in 2022.

*Below: CD43 weir on the outlet of Clear Lake.*





## SWCD Projects



*Top Left– Construction of a Farmable Sediment Basin*

*Top Right– Non– Perforated Tile for a Wetland Restoration Outlet*

*Bottom Left– Construction of Wetland Restorations*





## SWCD Projects



*Plane getting loaded with cover crop seed for aerial application.*



*Drilled Cereal Rye After Corn Silage Harvest.*



*Year 5 of Aerial Application of Cover Crops Partnering with Scott County.*



## SWCD Retirement

### Glendon Braun Retires from SWCD Board

SWCD District 3 Board Member Glendon Braun of rural Le Sueur resigned in October 2022. Glendon was an advocate for the SWCD and conservation in Le Sueur County. His commitment to the District started back in 1966 when he was first elected. Over the years, Glendon held many positions on the board including Board Chair and Vice Chair. Glendon was nominated by his fellow Board members as the SWCD Outstanding Farmer in 2005 with his son Monty Braun. The effort Glendon put into the SWCD over the years helped create what the SWCD is today and the SWCD Board and Staff are very thankful for Glendon's commitment over his 56 years of service.



*Above: SWCD Board gave Glendon a custom clock for his retirement; Below: Photos of Glendon's time on the Board.*





# SWCD Office

## Le Sueur SWCD Supervisors



**Greg Entinger (District 1)**



**Earle Traxler (District 2)**



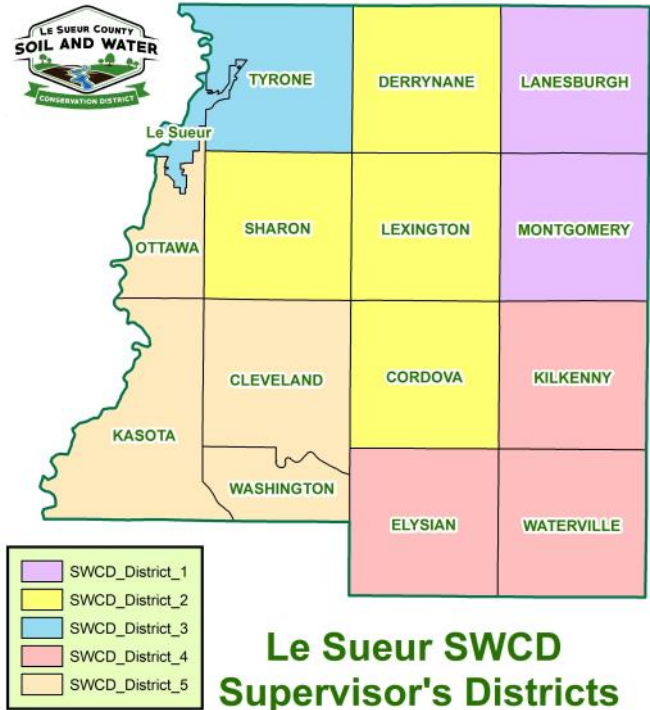
**Pete Thelemann (District 3)**



**Cletus Gregor (District 4)**



**Jim Struck (District 5)**







## SWCD Office

### Le Sueur County SWCD Staff



*Michael Schultz, District Manager*



*Sue Prchal, Program Specialist*



*Joe Jirik, District Technician*

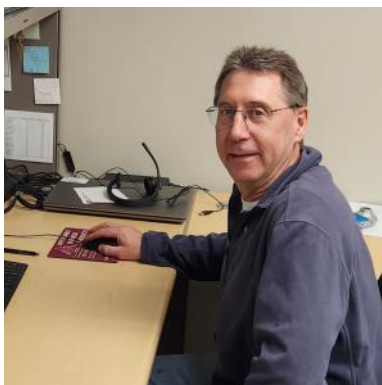


*Karl Schmidtke, Resource Technician*

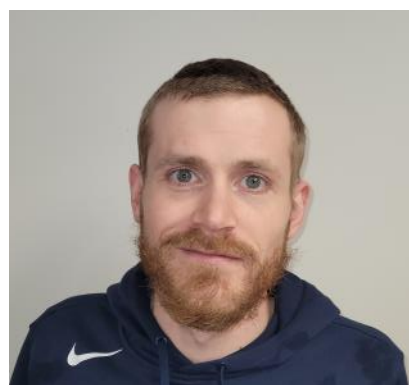


*Nik Kadel, Ditch Specialist*

### Le Sueur Natural Resource Conservation Service Staff



*Steve Breaker,  
District Conservationist*



*Geoff Popken,  
Soil Conservation Technician*



*Collin Williams,  
Civil Engineering Technician*