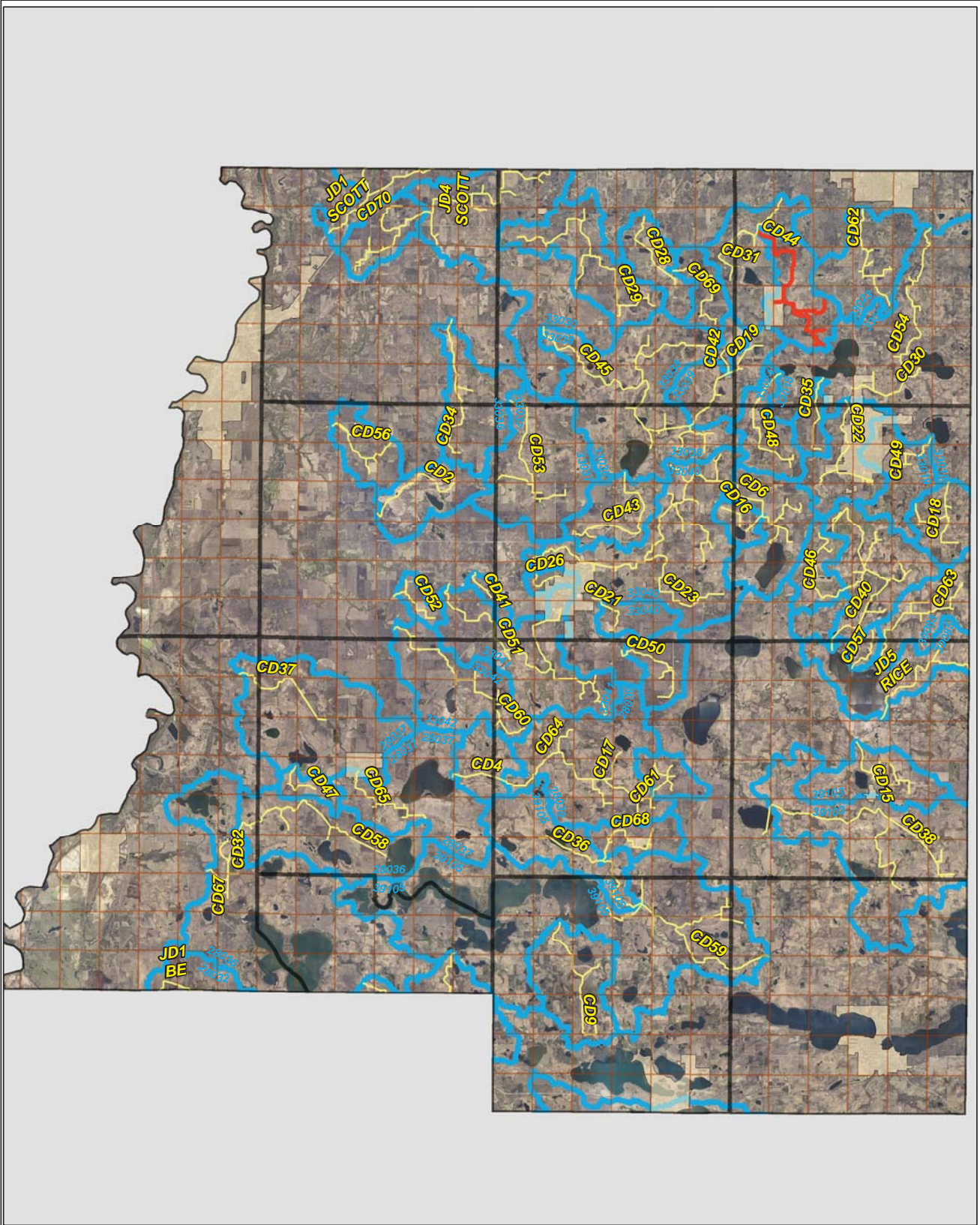
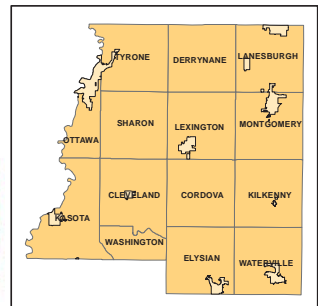
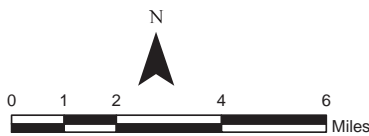


CD 44

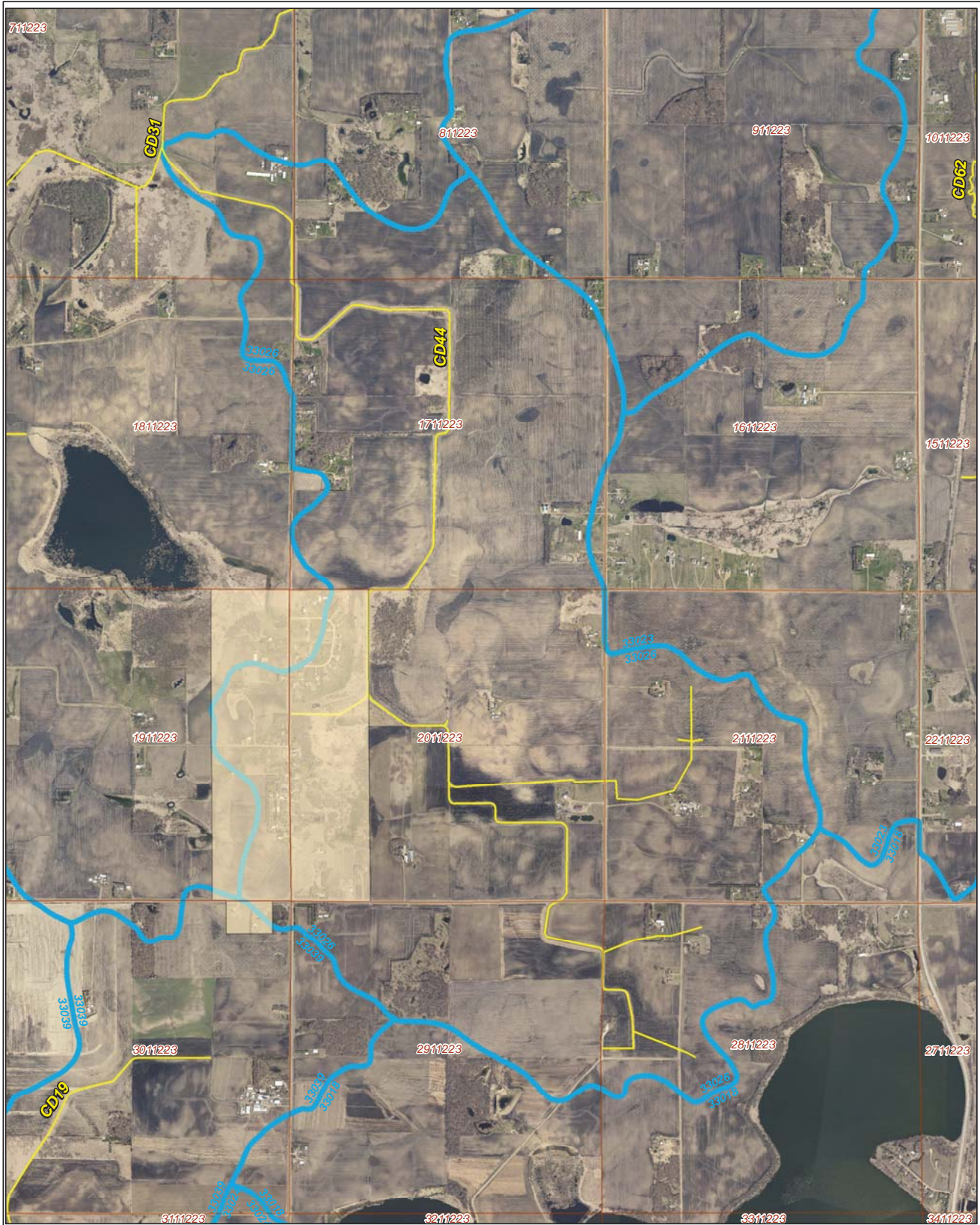


Legend





- Sections
- Cities
- Ditches**
-
-
- Ditch Watershed



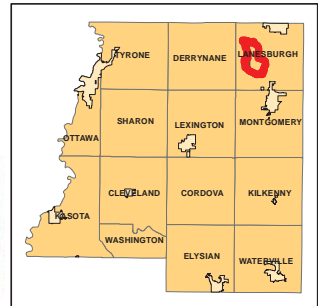
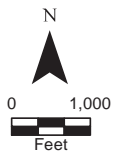
Ditch Watershed



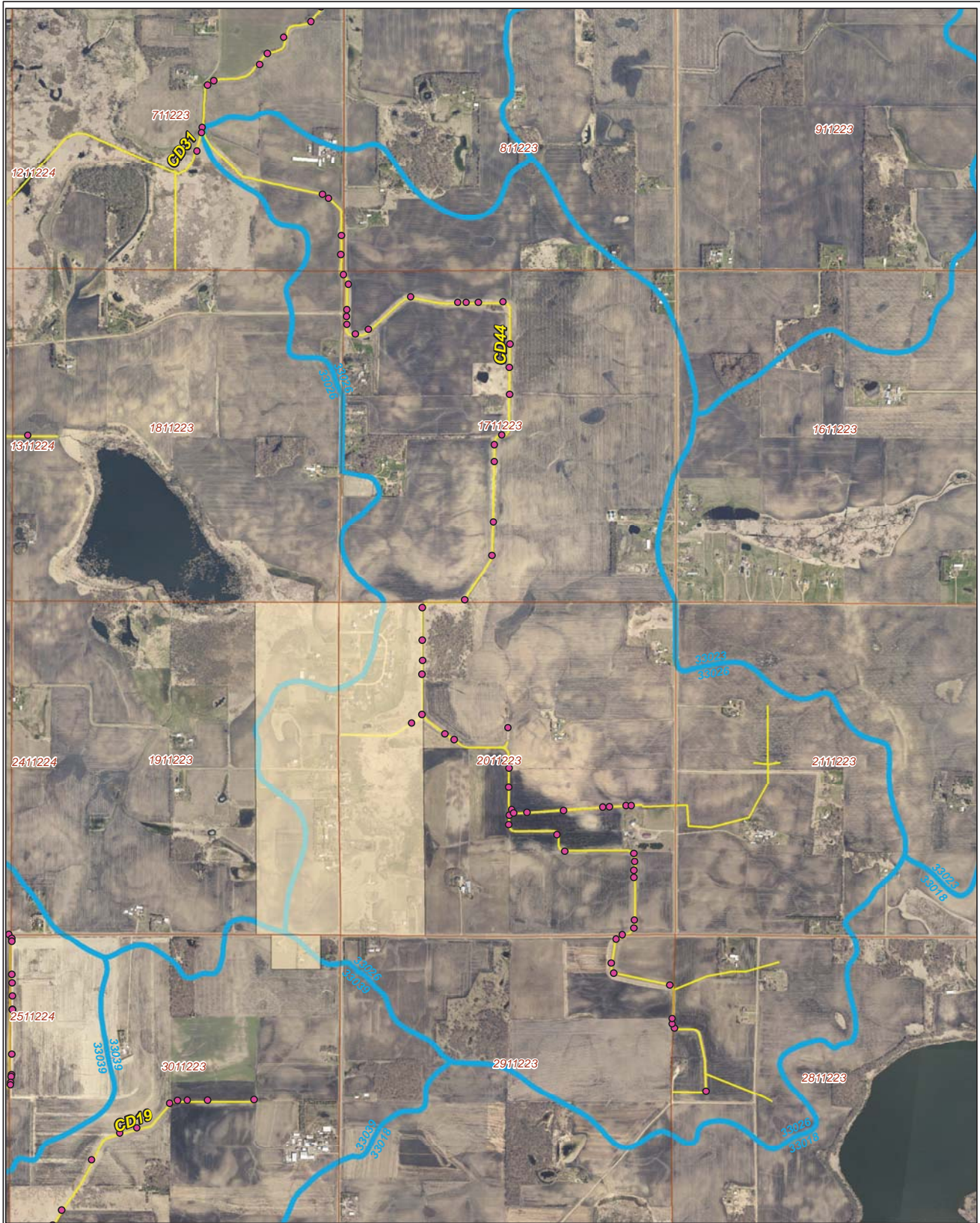
Legend

-  Sections
-  Cities
-  Ditches
-  Ditch Watershed

Ditch ID: 33026CD44
Acres: 2311.51



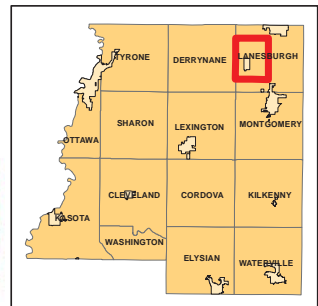
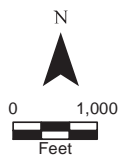
2006 Ditch Inventory



Legend

- Ditch Inventory
- Sections
- Cities
- Ditches
- Ditch Watershed

Ditch Name: CD44

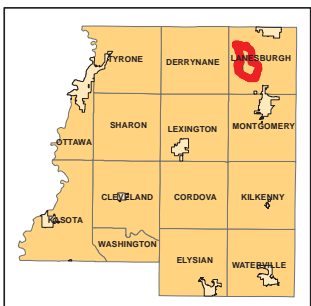
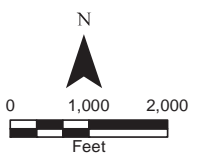


High Priority - Stream Power Index Sites

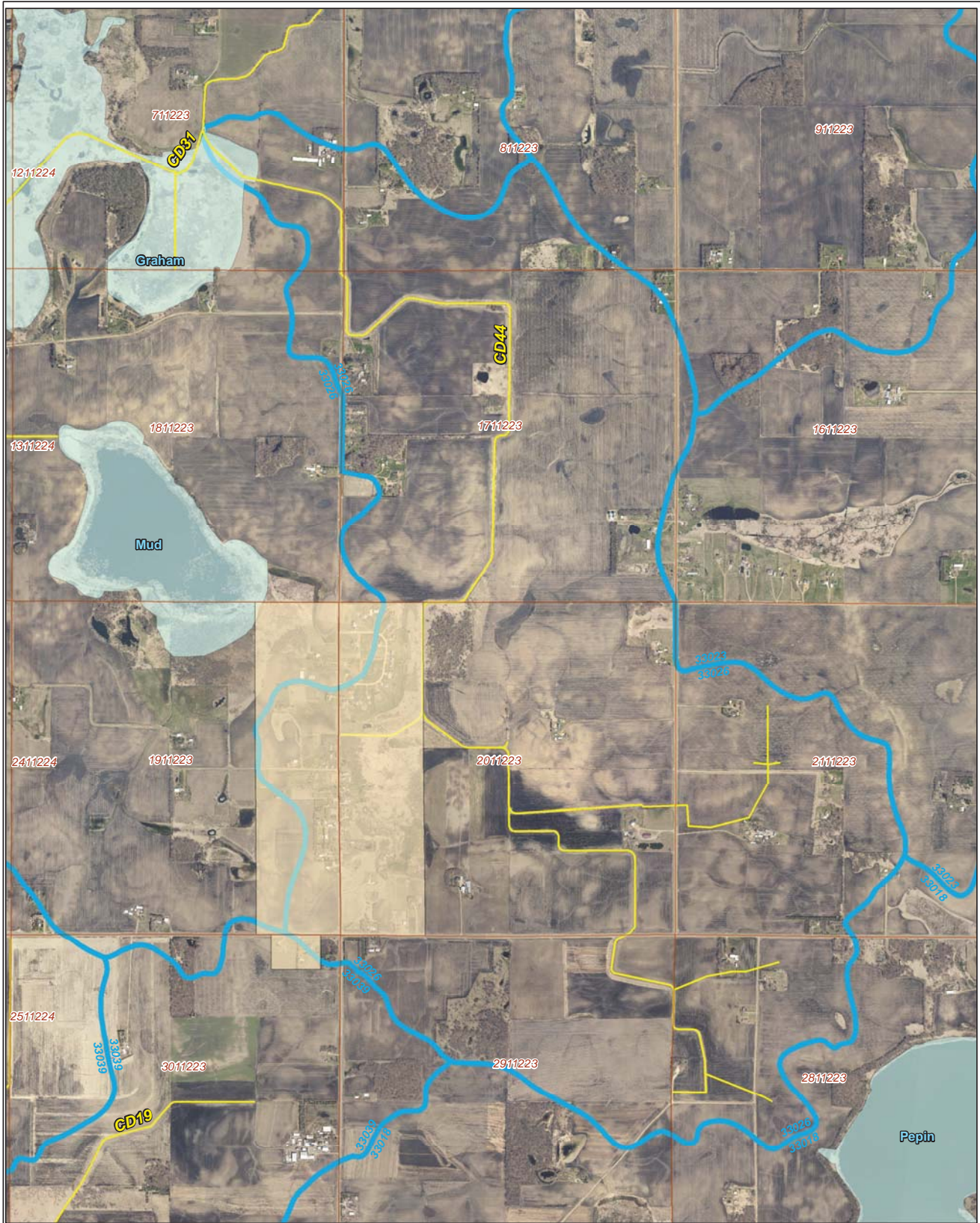


Ditch Name: CD44

Legend		Ditches
Mean SPI Rank	Combined Sediment and SPI Rank	— Ditches
Low	Low	— Sections
Low/Moderate	Low/Moderate	— Cities
Moderate	Moderate	— Ditch Watershed
High/Moderate	Moderate/High	
High	High	




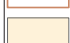
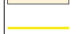



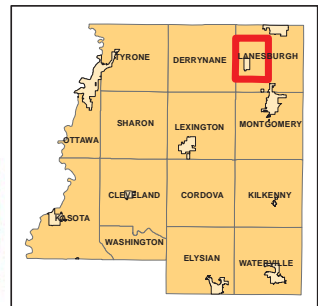
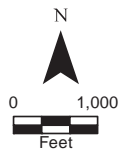
DNR Public Waters



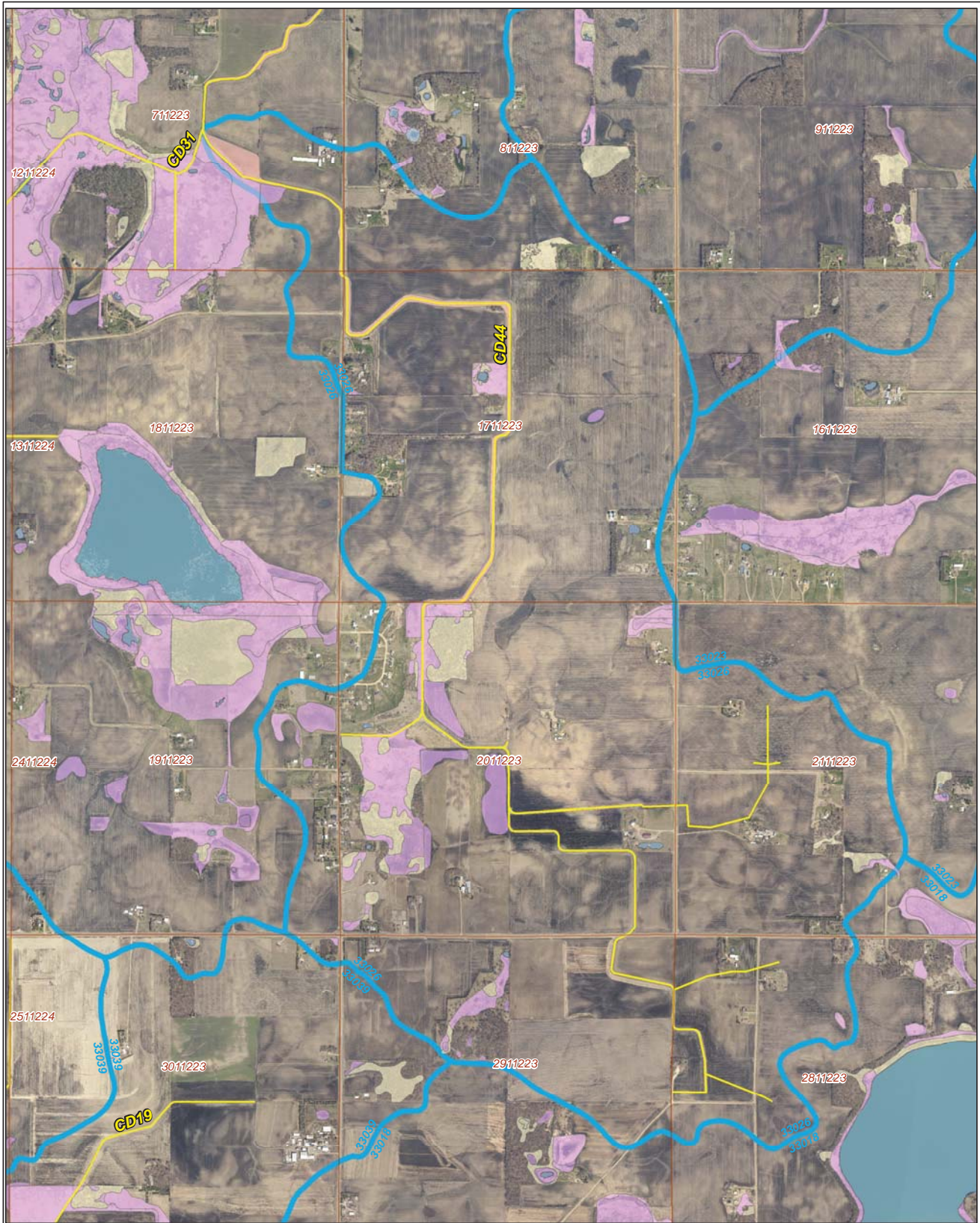
Ditch Name: CD44

Legend

-  DNR Public Lakes and Basins
-  DNR Rivers and Streams
-  Sections
-  Cities
-  Ditches
-  Ditch Watershed



2015 Wetland Inventory



Ditch Name: CD44

Legend

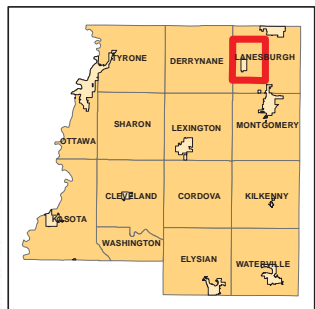
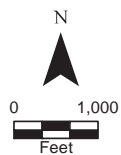
Wetland Type

- Freshwater Emergent Wetland
- Freshwater Forested/Shrub Wetland
- Freshwater Pond
- Lake
- Riverine

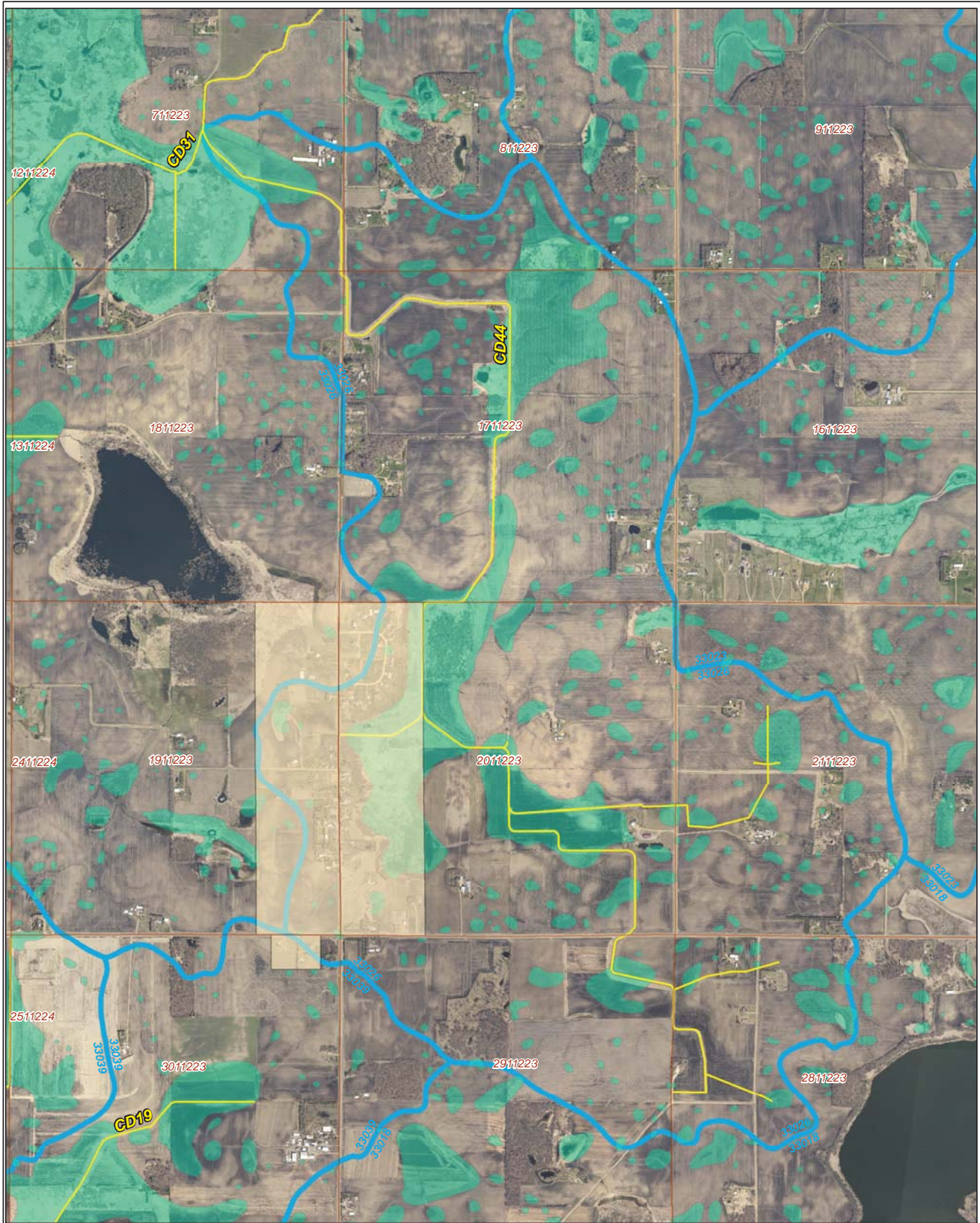
Sections

Ditches

Ditch Watershed



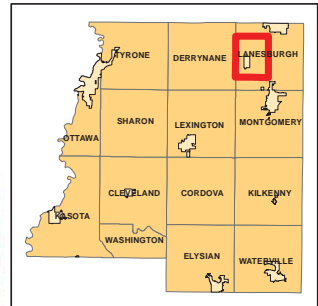
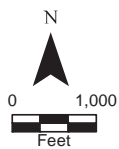
Restorable Wetlands



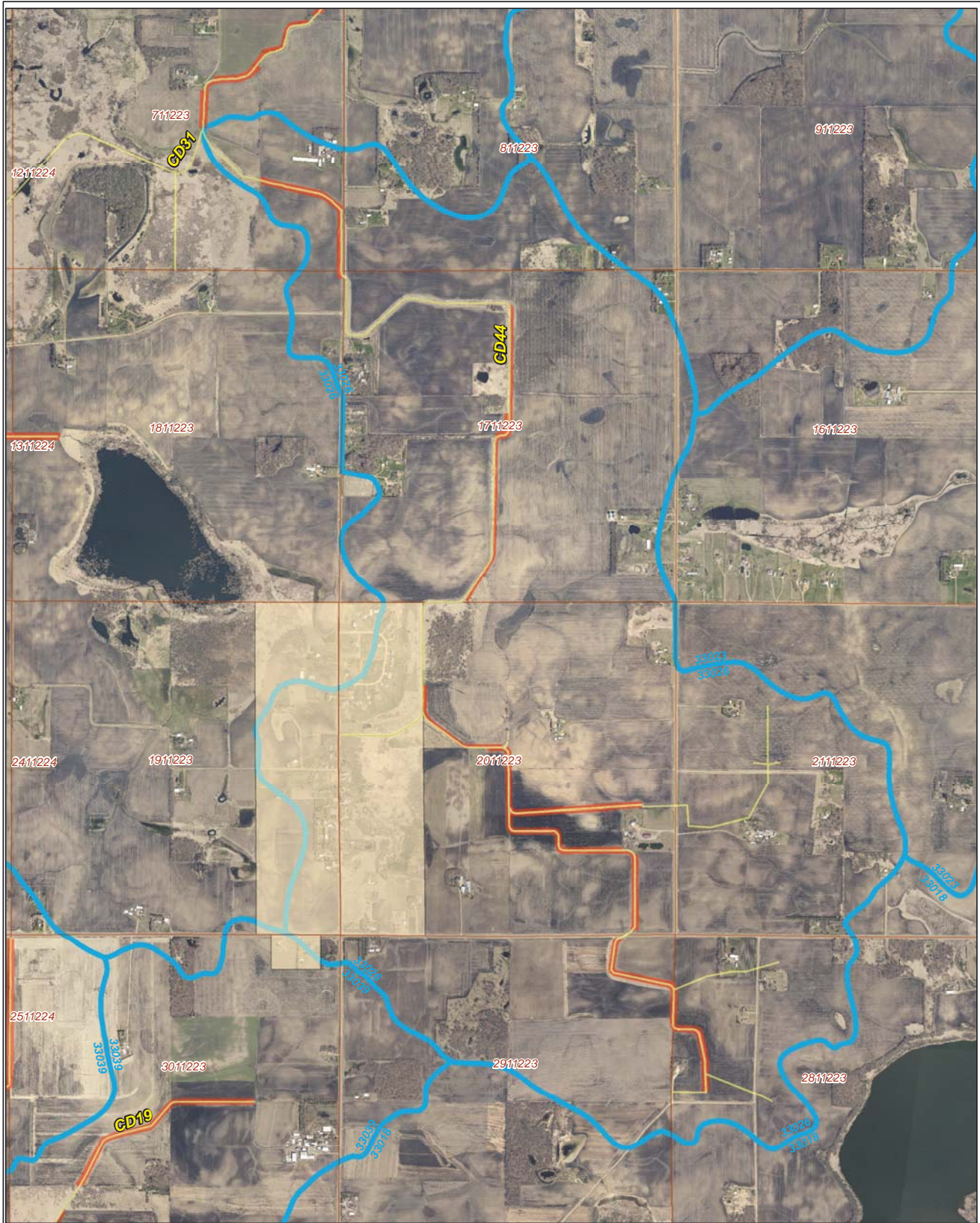
Ditch Name: CD44

Legend




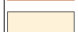
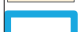
- Retention Locations
- Sections
- Cities
- Ditches
- Ditch Watershed



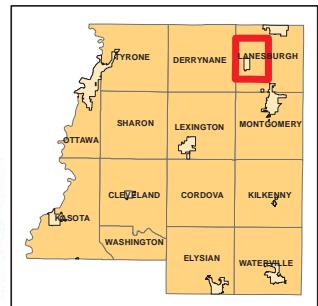
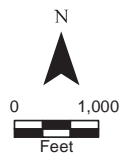
Ditch Buffer



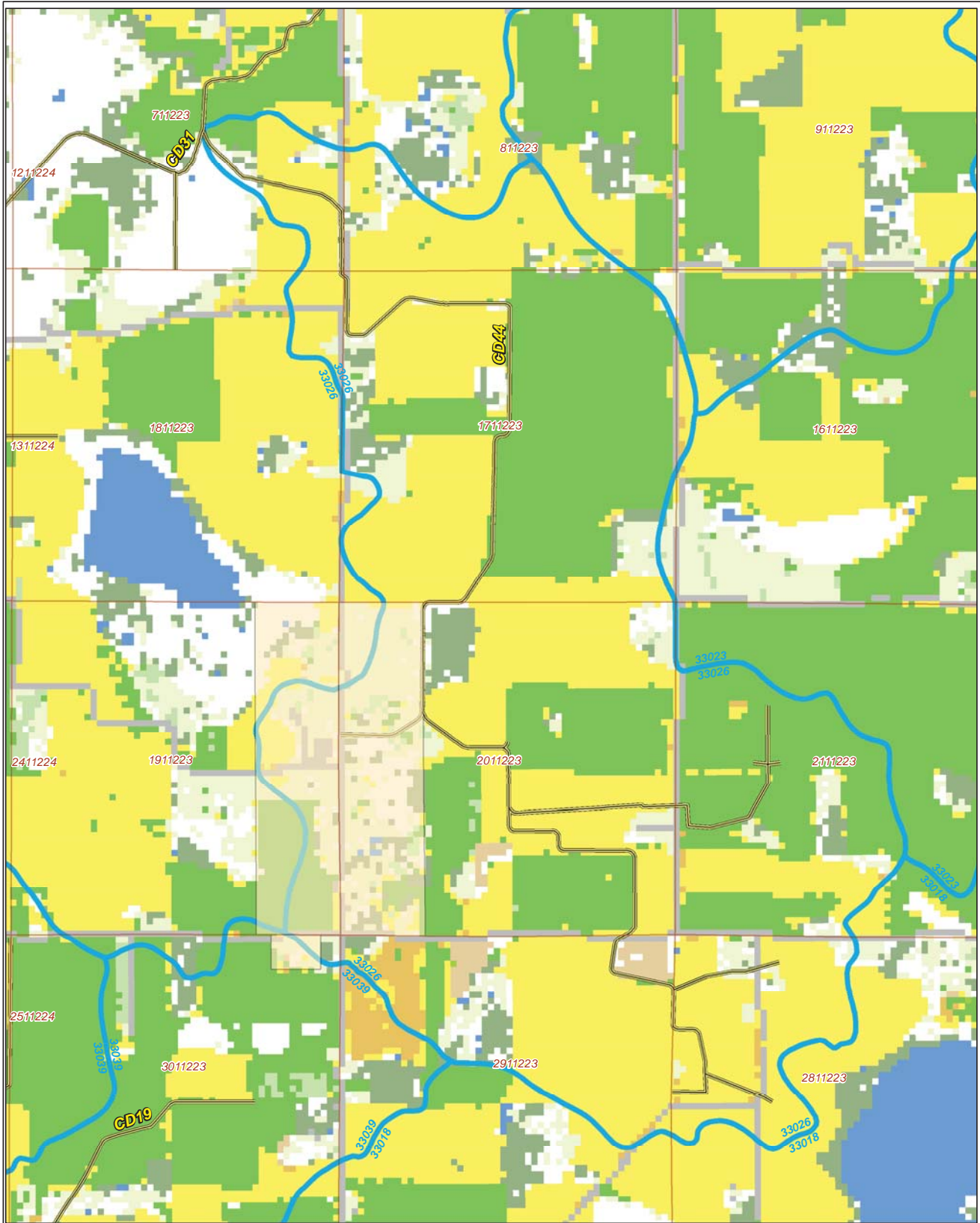
Legend

-  Ditches
-  Needs Buffer
-  Sections
-  Cities
-  Ditch Watershed

Ditch Name: CD44
Percent Buffered: 56.22%



2015 Crop Coverage



Ditch Name: CD44

Legend	
Coverage Type	
Open Water	Sections
Alfalfa	Other Hay/Non Alfalfa
Corn	Peas
Forest	Soybeans
Developed Area	Spring Wheat
Grass/Pasture	Sweet Corn
	Ditches
	Ditch Watershed

