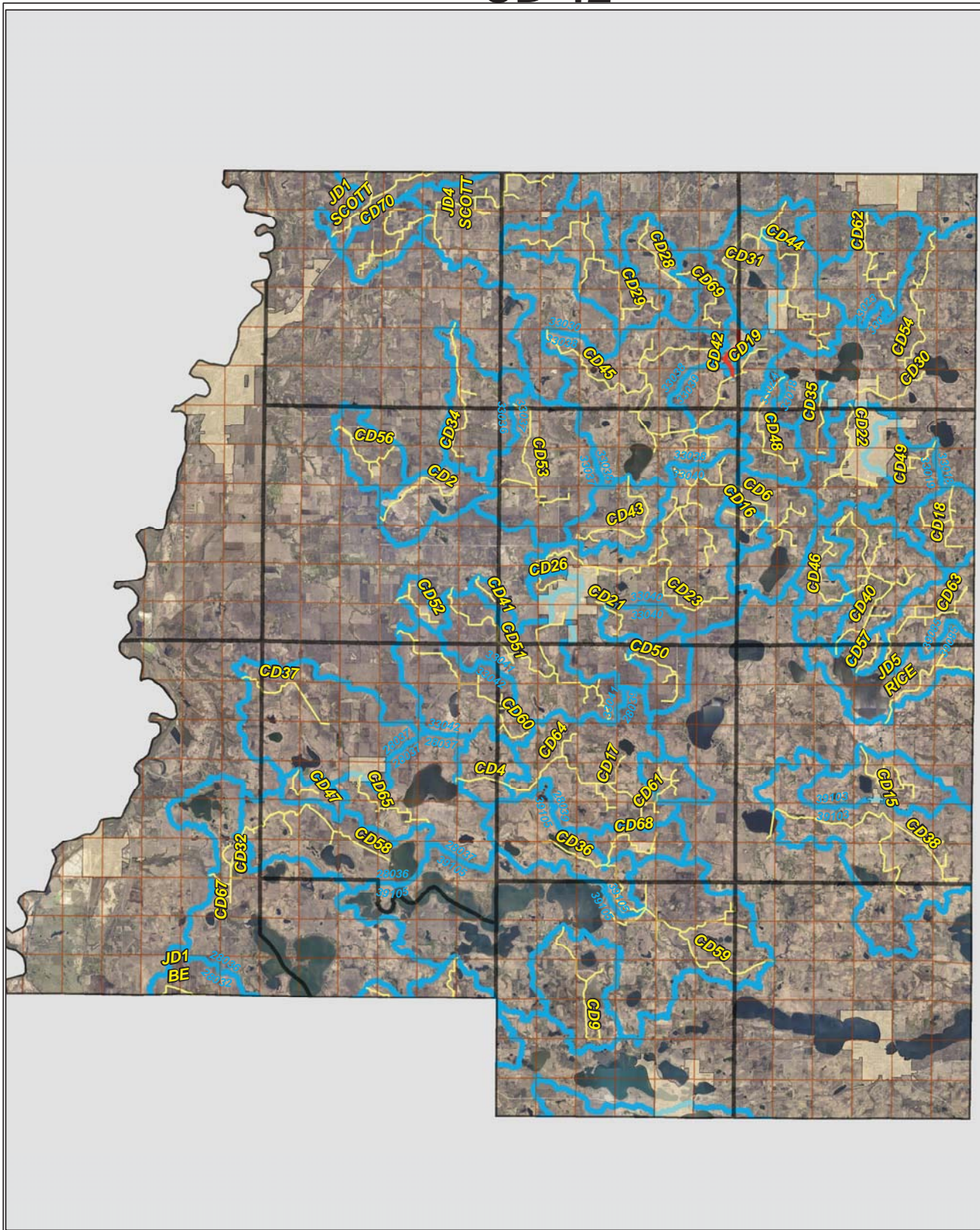





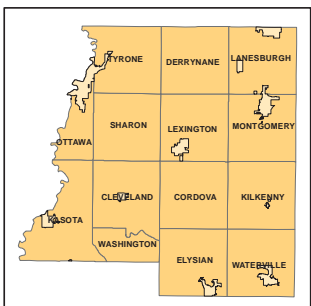
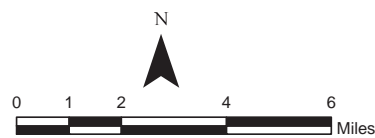


CD 42

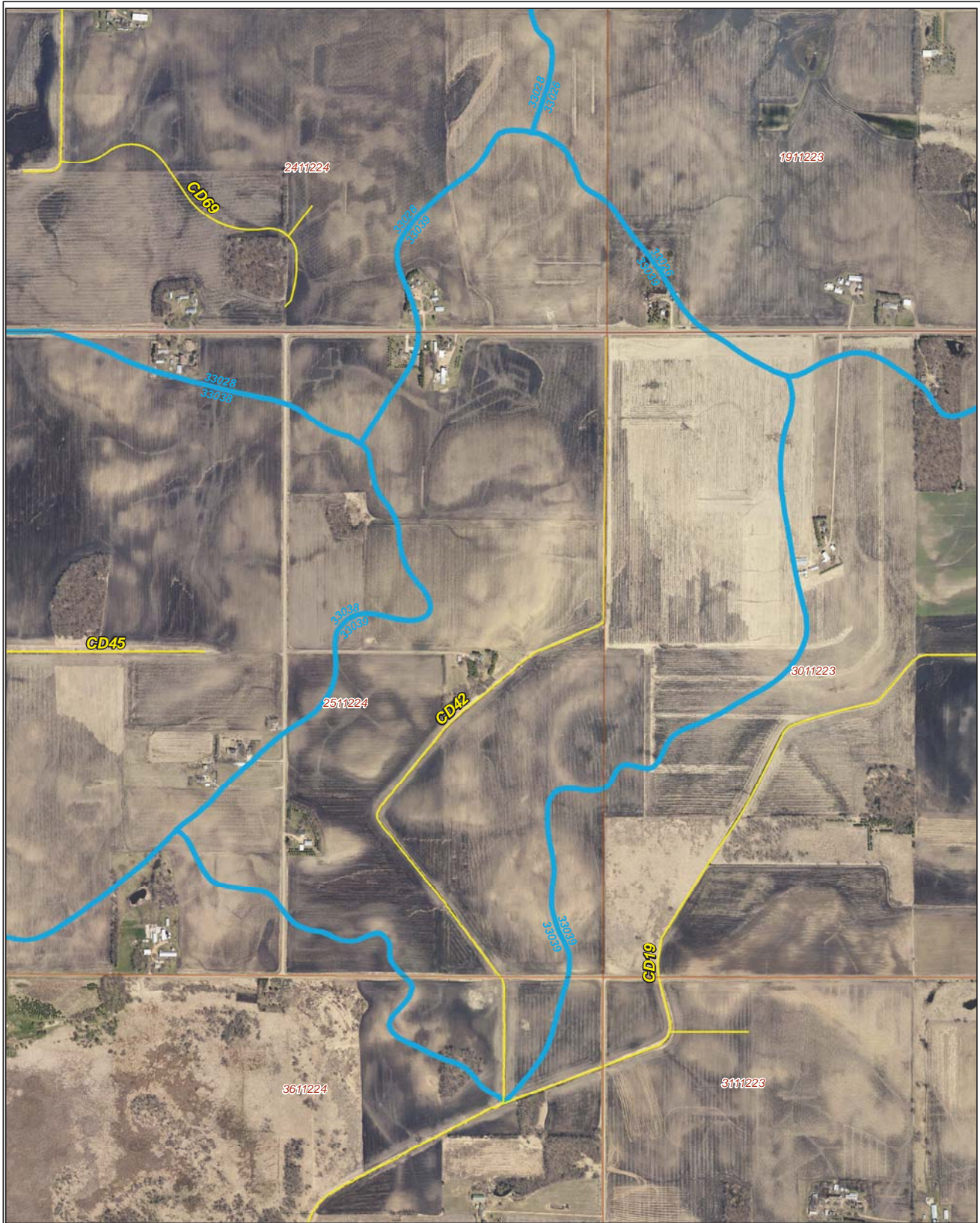


Legend





-  Sections
-  Cities
- Ditches**
-  Ditch
-  Ditch
-  Ditch Watershed



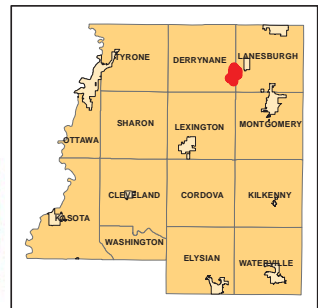
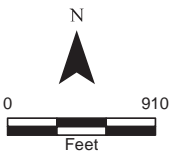
Ditch Watershed



Legend

-  Sections
-  Cities
-  Ditches
-  Ditch Watershed

Ditch ID: 33039CD42
Acres: 453.01



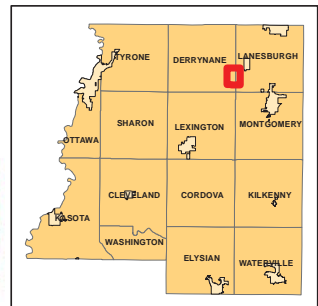
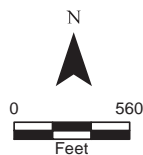
2006 Ditch Inventory



Legend

- Ditch Inventory
- Sections
- Cities
- Ditches
- Ditch Watershed

Ditch Name: CD42




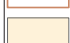
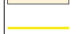



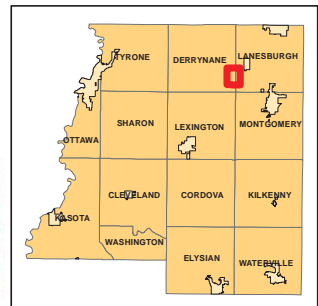
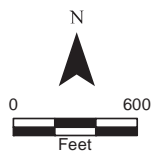
DNR Public Waters



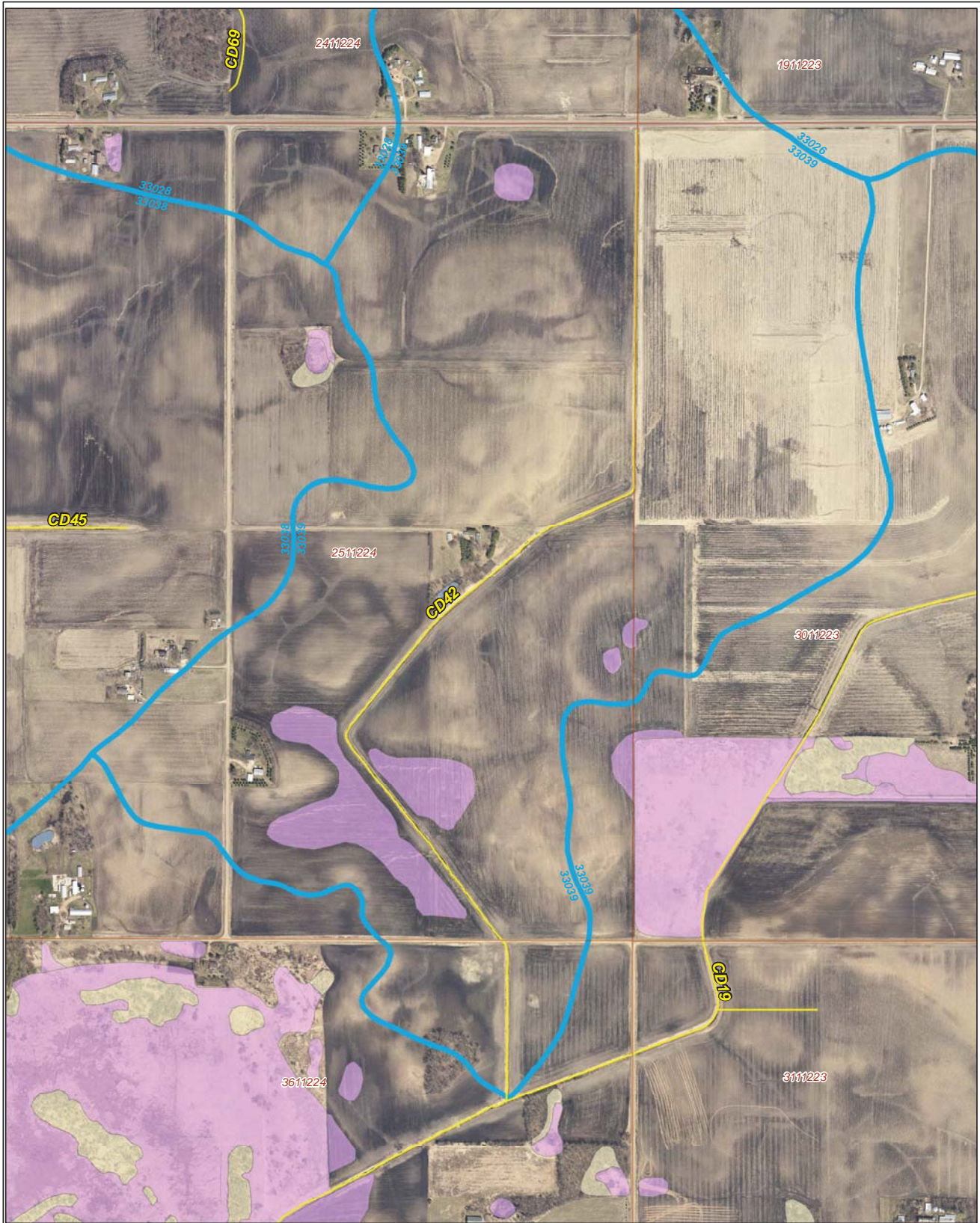
Ditch Name: CD42

Legend

-  DNR Public Lakes and Basins
-  DNR Rivers and Streams
-  Sections
-  Cities
-  Ditches
-  Ditch Watershed

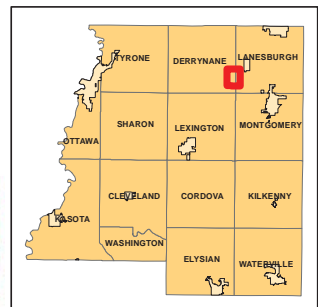
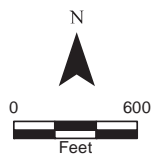


2015 Wetland Inventory

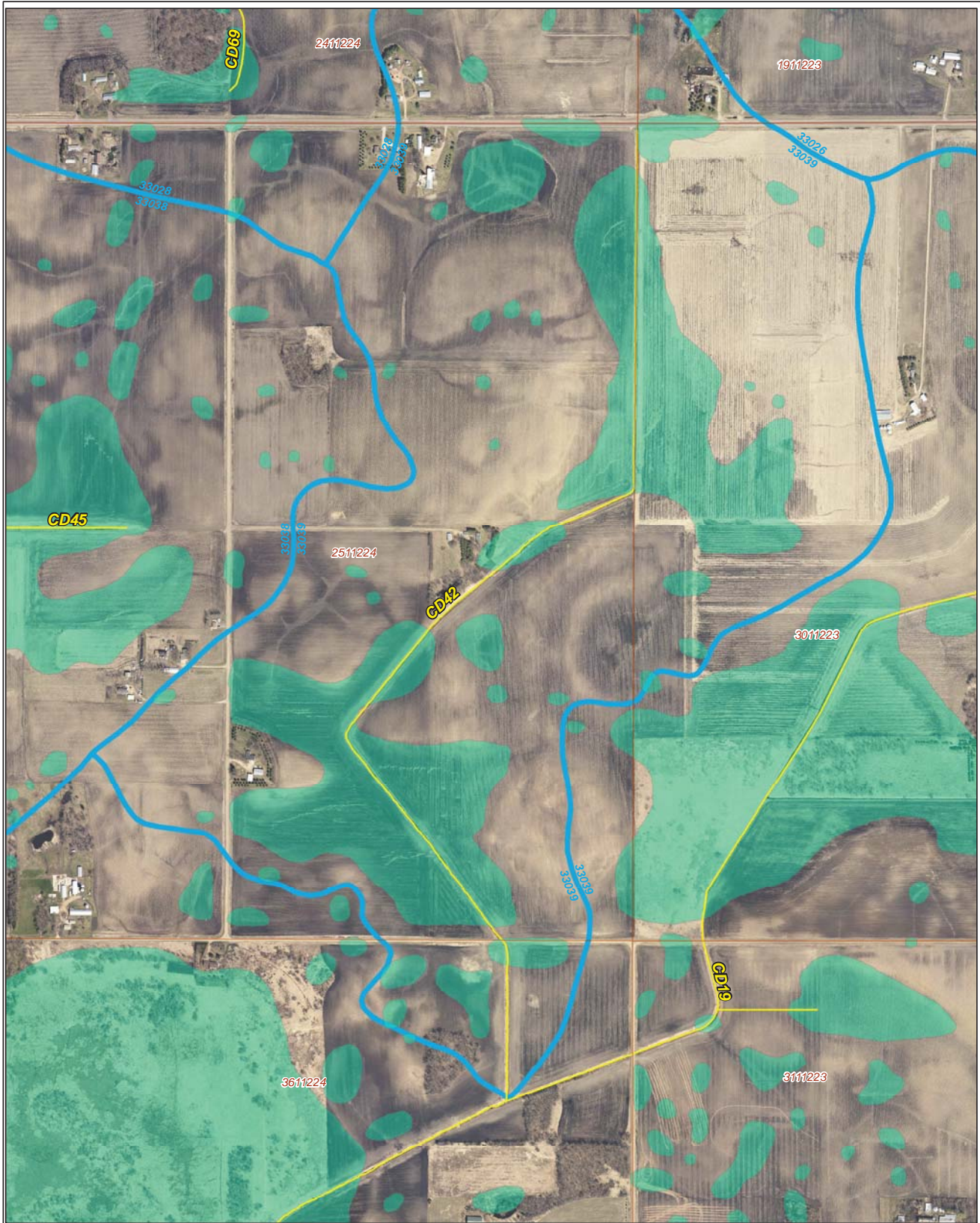


Ditch Name: CD42

Legend	
Wetland Type	
	Freshwater Emergent Wetland
	Freshwater Forested/Shrub Wetland
	Freshwater Pond
	Lake
	Riverine
	Sections
	Ditches
	Ditch Watershed



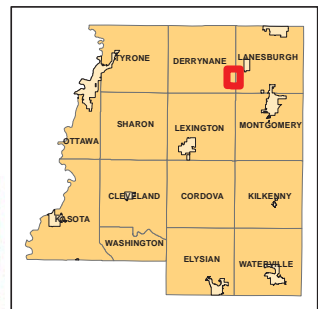
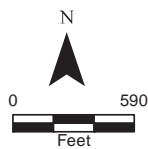
Restorable Wetlands



Ditch Name: CD42

Legend






- Retention Locations
- Sections
- Cities
- Ditches
- Ditch Watershed



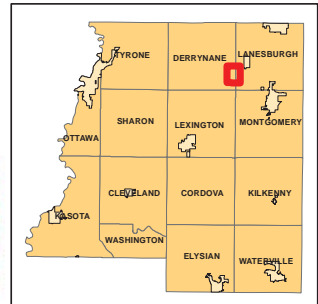
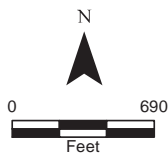
Ditch Buffer



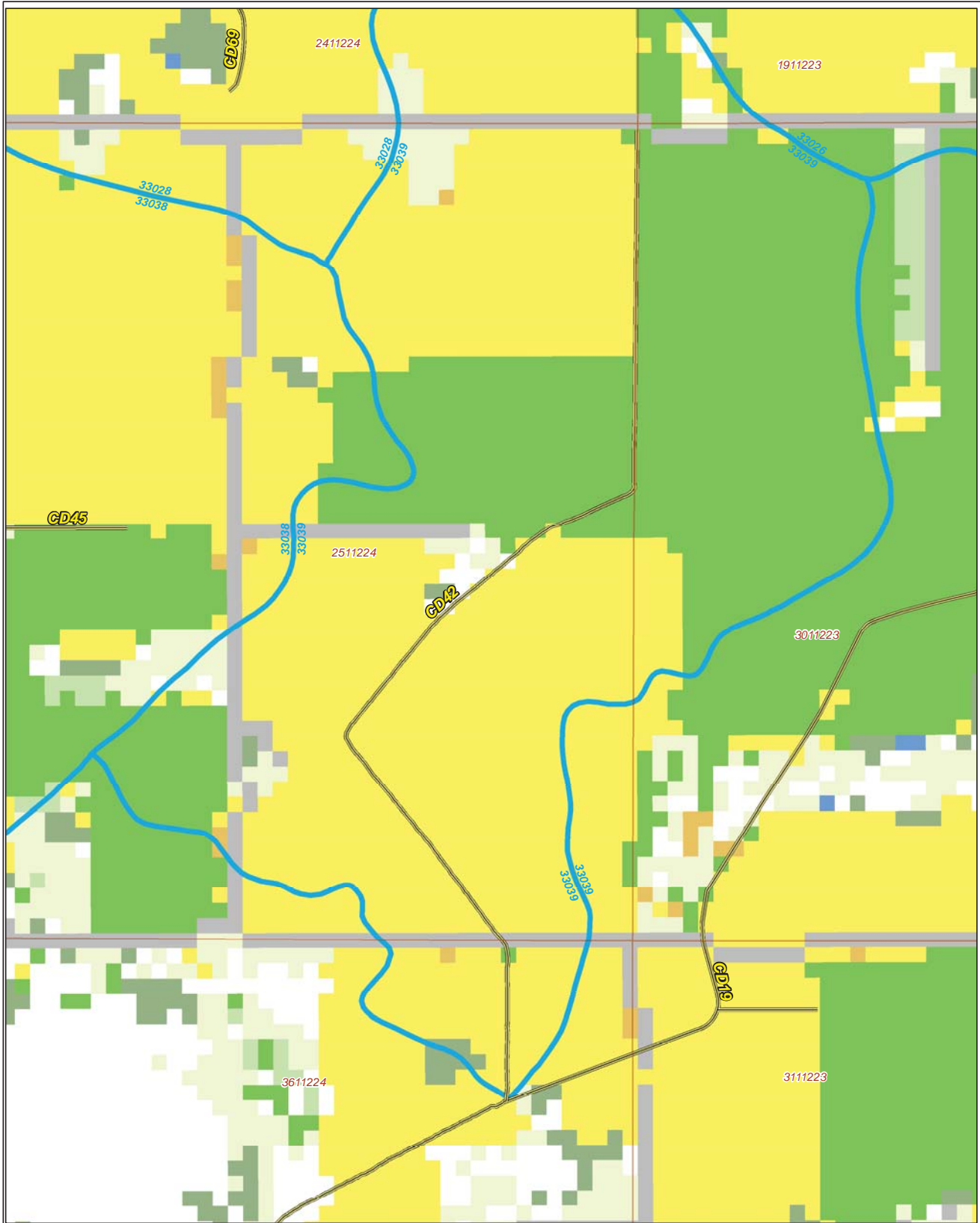
Legend

-  Ditches
-  Needs Buffer
-  Sections
-  Cities
-  Ditch Watershed

Ditch Name: CD42
Percent Buffered: 8.94%



2015 Crop Coverage



Ditch Name: CD42

Legend		
Coverage Type		
Alfalfa	Open Water	Sections
Corn	Other Hay/Non Alfalfa	Cities
Forest	Peas	Ditches
Developed Area	Soybeans	Ditch Watershed
Grass/Pasture	Spring Wheat	
	Sweet Corn	

