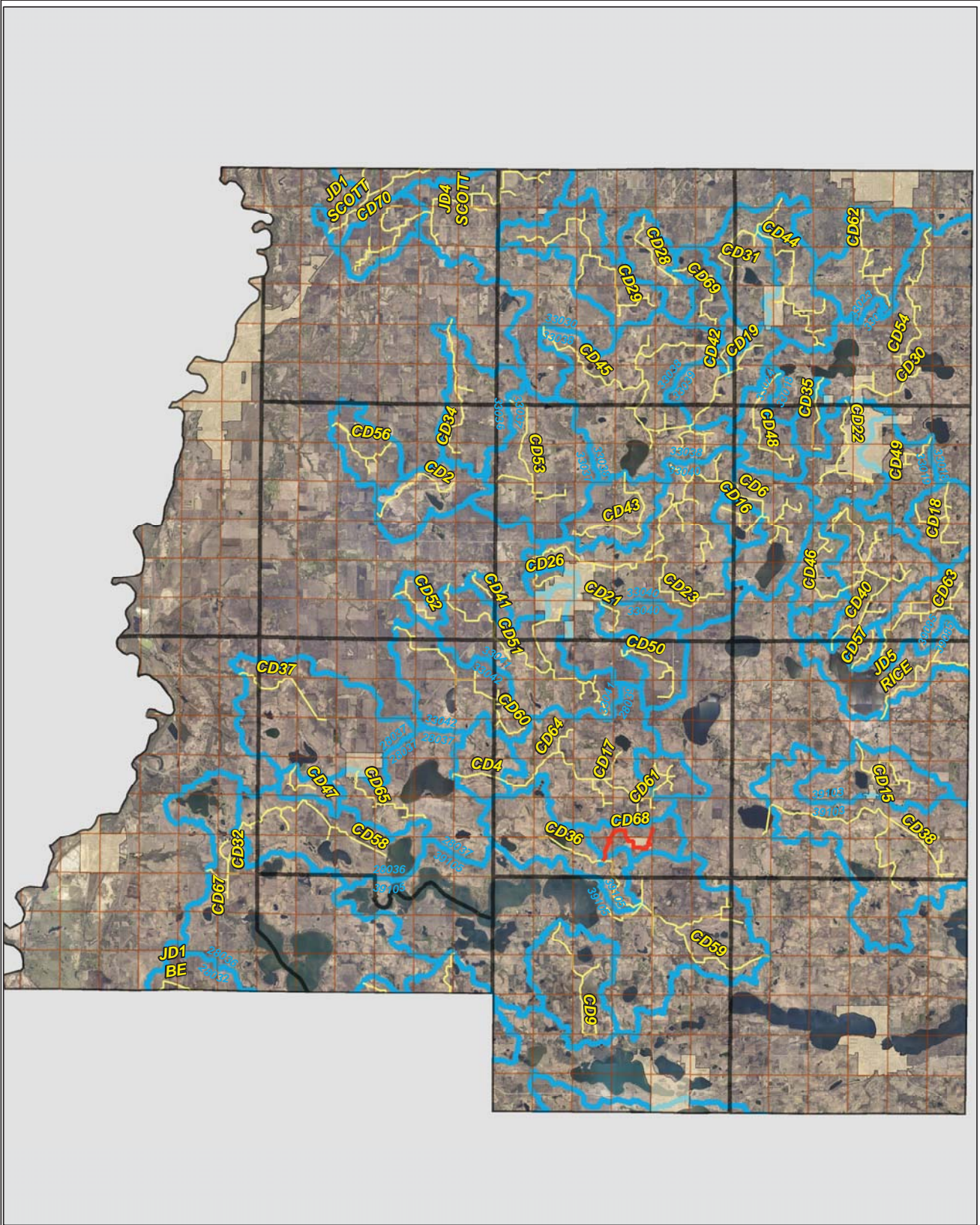







# CD 68

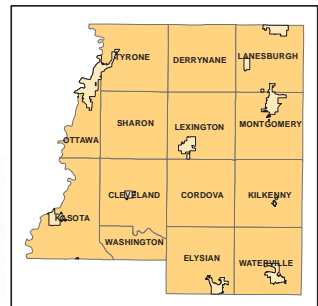


**Legend**

-  Sections
-  Cities
- Ditches**
-  Ditch
-  Ditch Watershed
-  Ditch Watershed







N



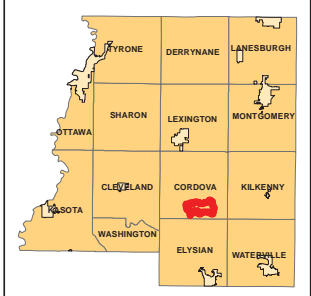
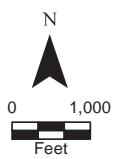
# Ditch Watershed



**Legend**

-  Sections
-  Cities
-  Ditches
-  Ditch Watershed

Ditch ID: 39105CD68  
Acres: 1286.13



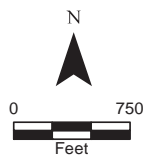
# 2006 Ditch Inventory



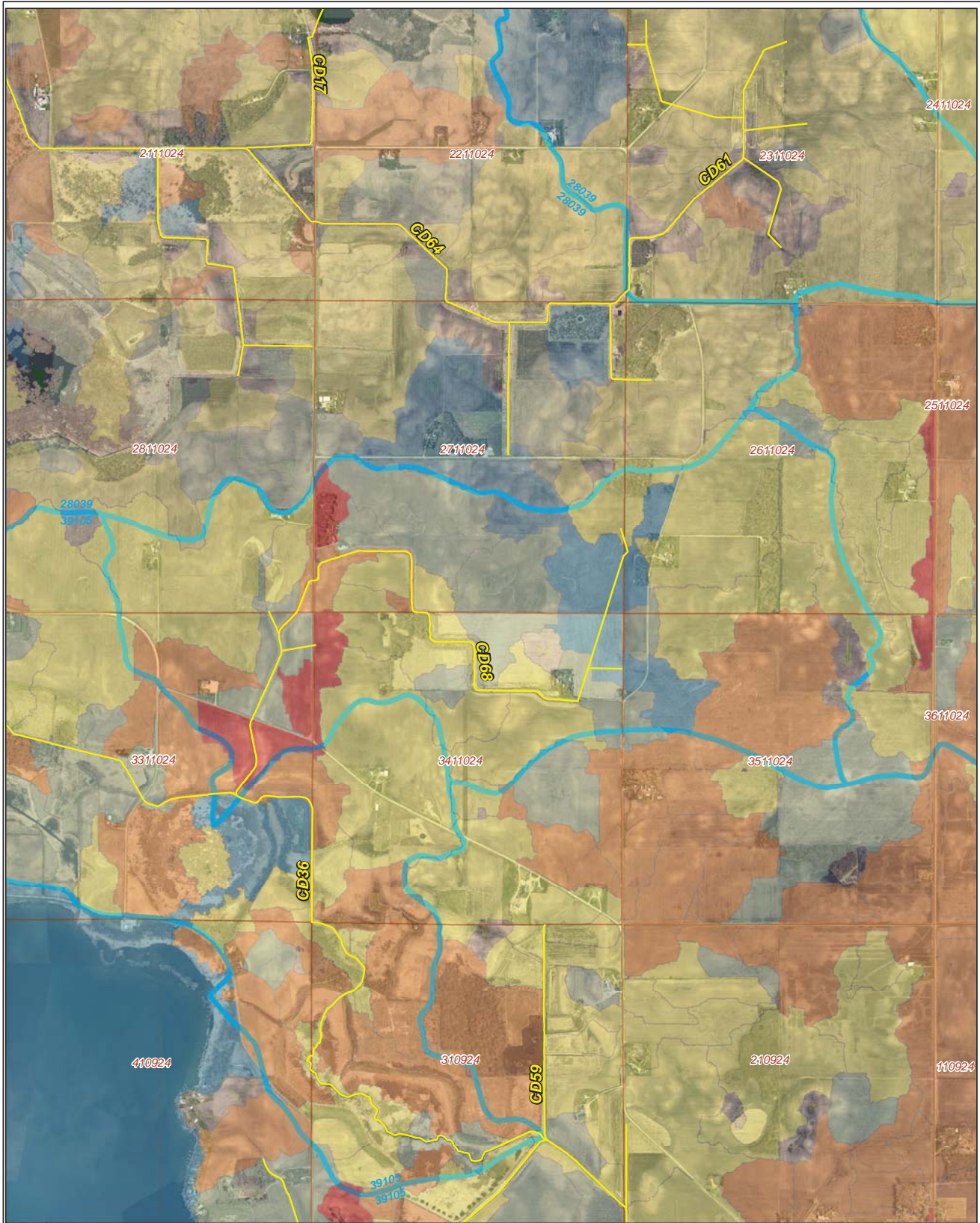
## Legend

- Ditch Inventory
- Sections
- Cities
- Ditches
- Ditch Watershed

Ditch Name: CD68

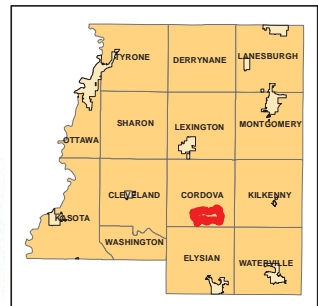
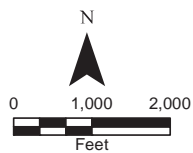


# High Priority - Stream Power Index Sites



Ditch Name: CD68

Legend		Ditches
<b>Mean SPI Rank</b>	<b>Combined Sediment and SPI Rank</b>	— Ditches
Low	Low	— Sections
Low/Moderate	Low/Moderate	— Cities
Moderate	Moderate	— Ditch Watershed
High/Moderate	Moderate/High	
High	High	



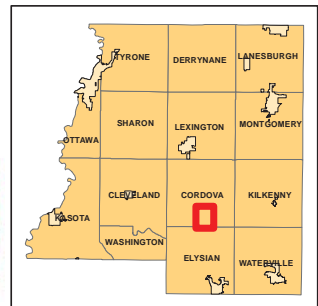
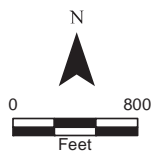
# DNR Public Waters



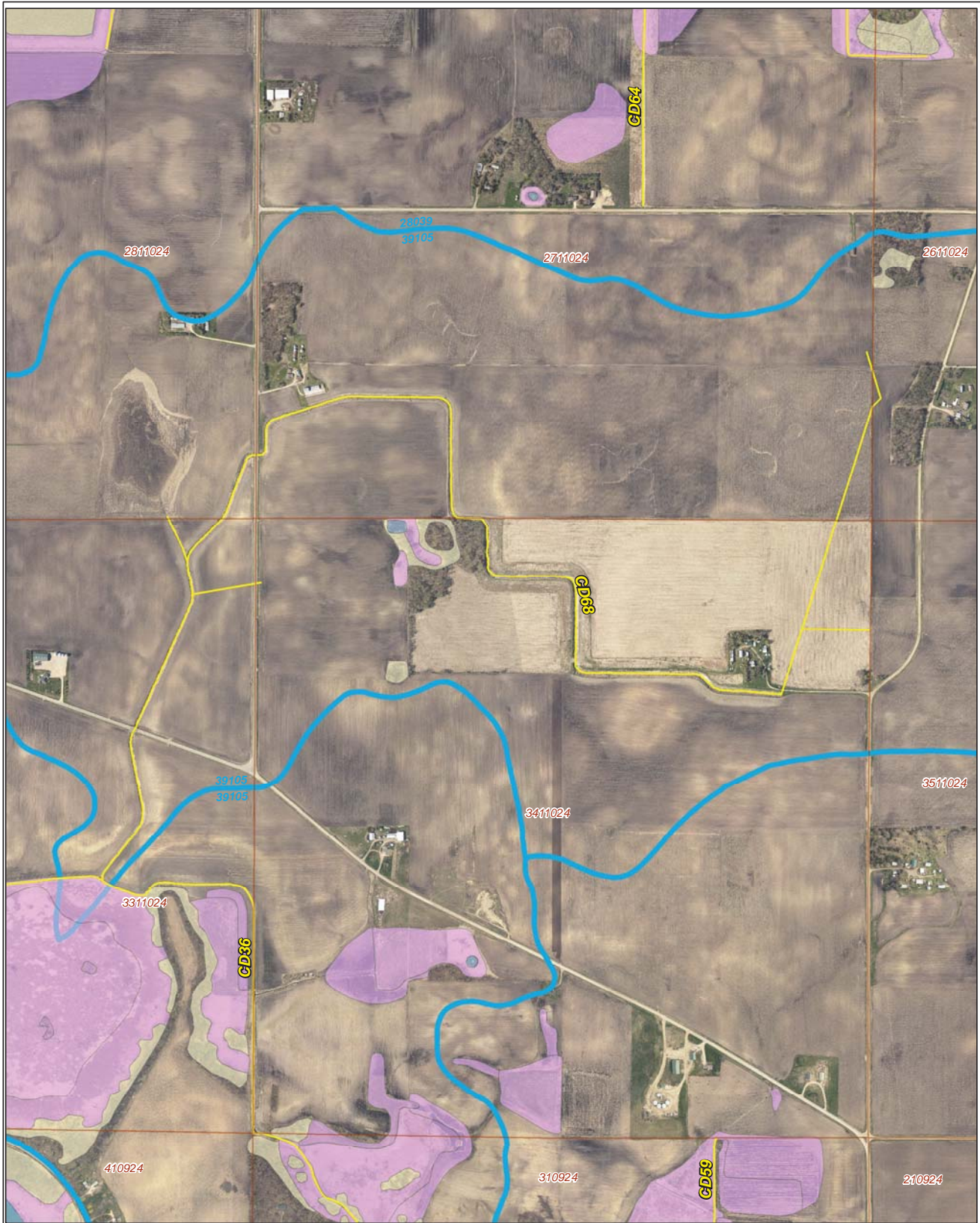
Ditch Name: CD68

## Legend

- DNR Public Lakes and Basins
- DNR Rivers and Streams
- Sections
- Cities
- Ditches
- Ditch Watershed



# 2015 Wetland Inventory

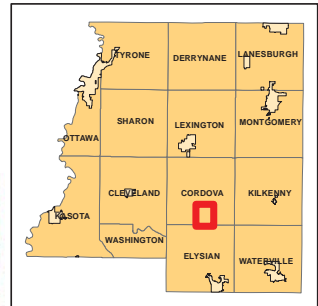


Ditch Name: CD68

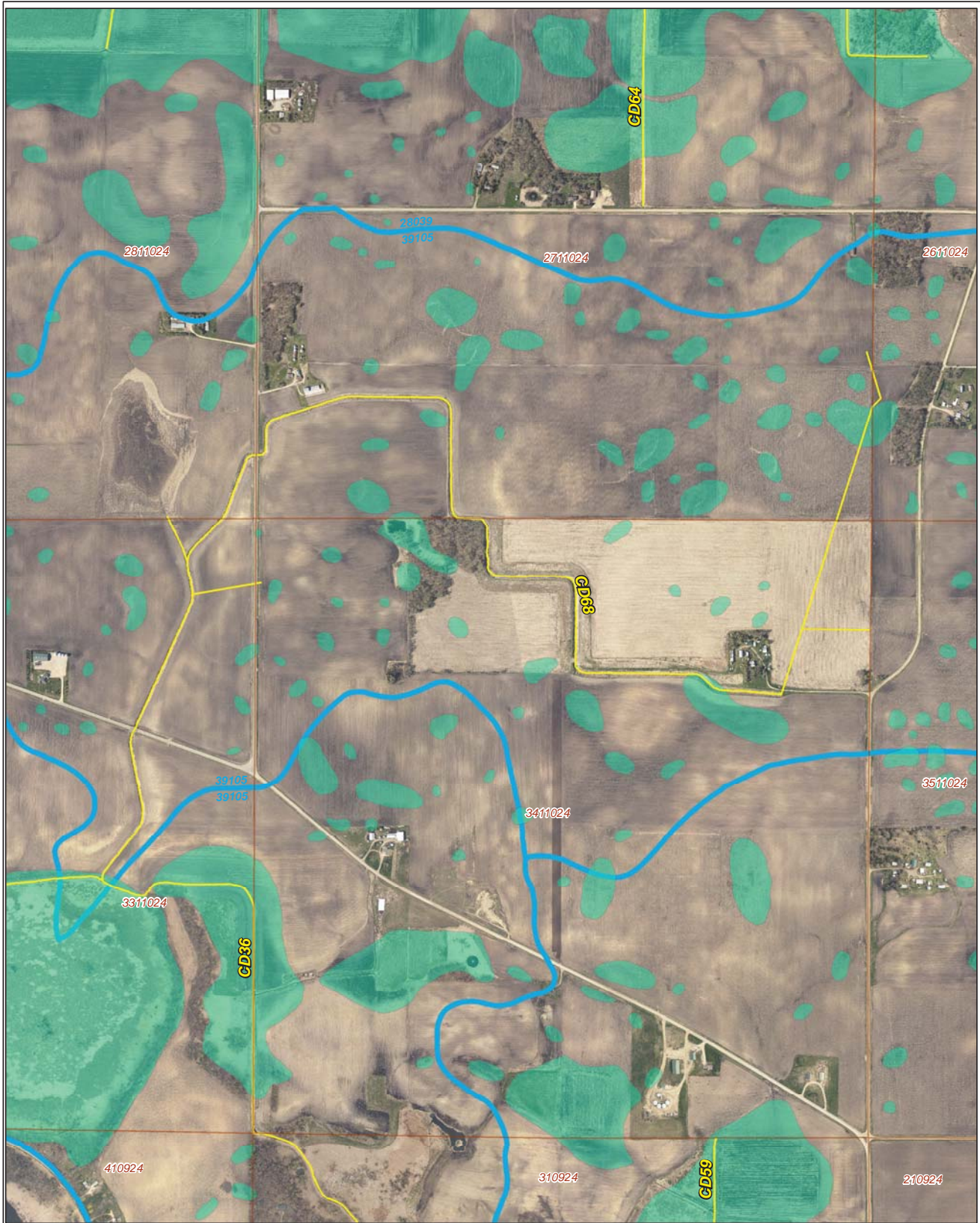
Legend	
	Freshwater Emergent Wetland
	Freshwater Forested/Shrub Wetland
	Freshwater Pond
	Lake
	Riverine
	Sections
	Ditches
	Ditch Watershed



N



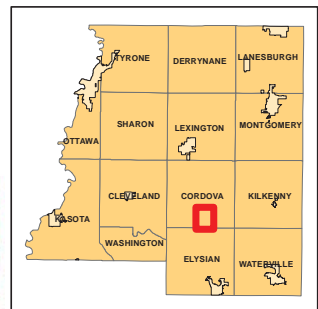
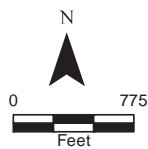
# Restorable Wetlands



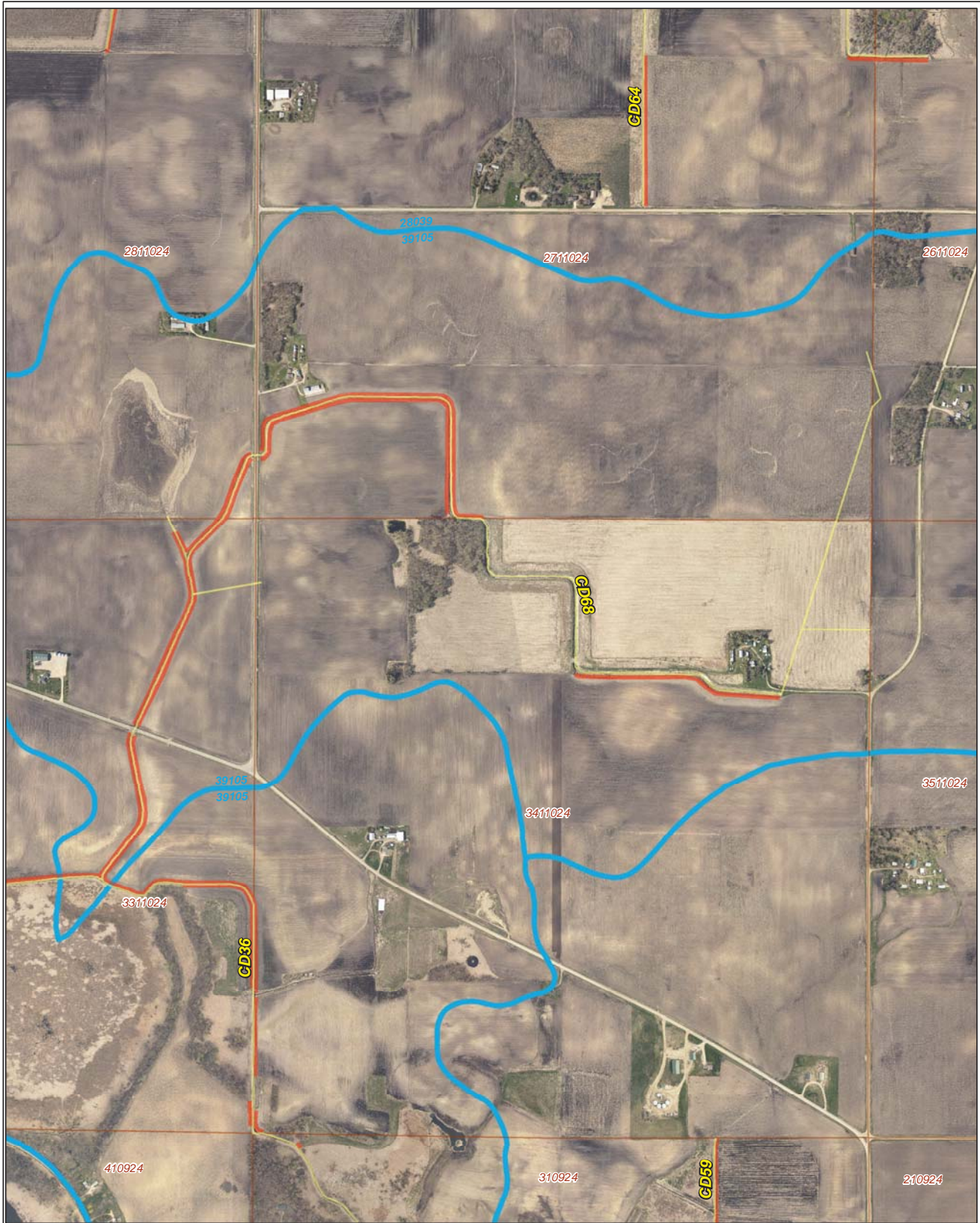
Ditch Name: CD68

## Legend

- Retention Locations
- Sections
- Cities
- Ditches
- Ditch Watershed



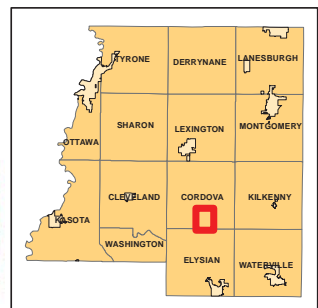
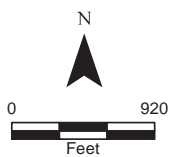
# Ditch Buffer



**Legend**

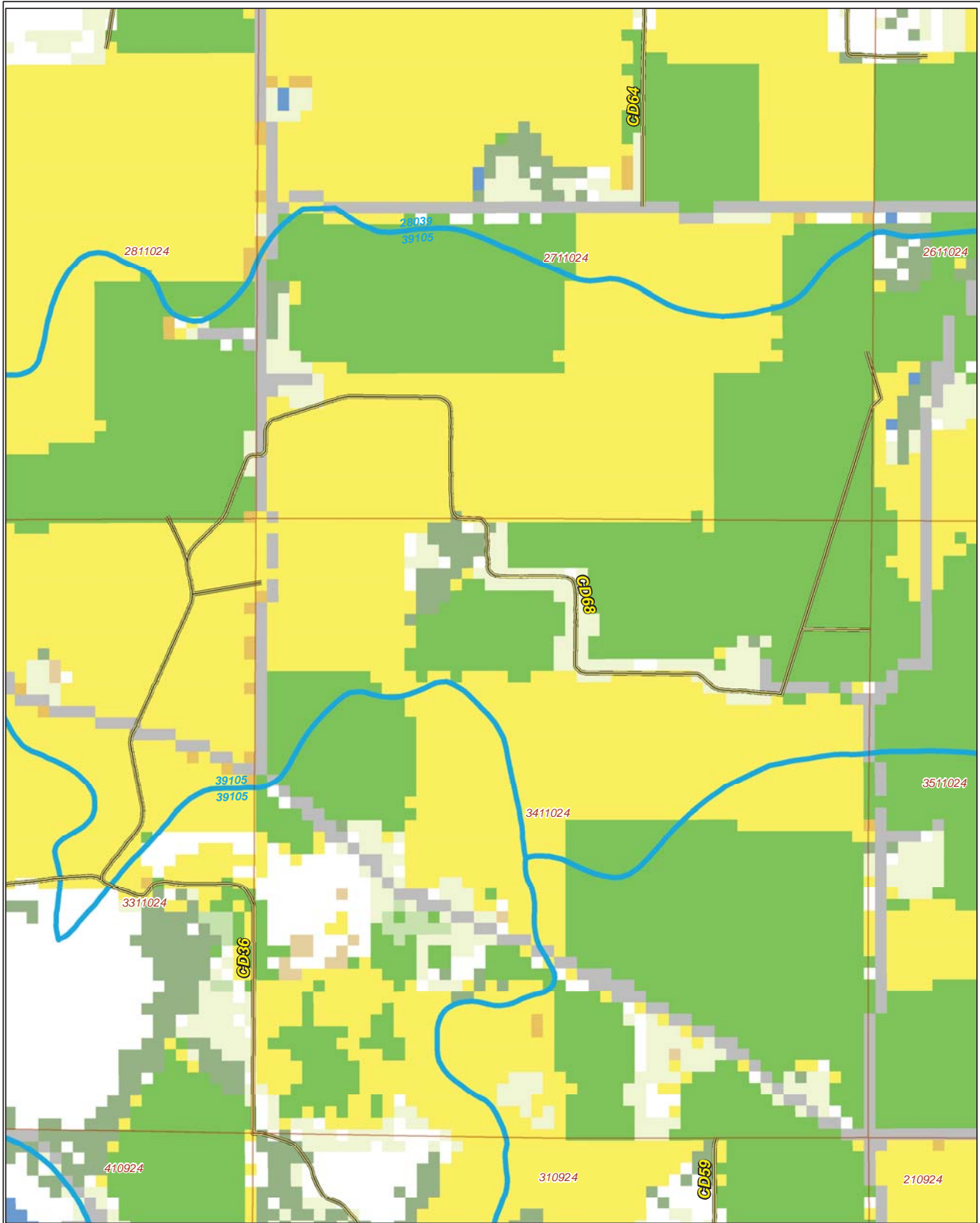
-  Ditches
-  Needs Buffer
-  Sections
-  Cities
-  Ditch Watershed

Ditch Name: CD68  
 Percent Buffered: 37.17%





# 2015 Crop Coverage



Ditch Name: CD68

Legend		
Coverage Type		
Alfalfa	Open Water	Sections
Corn	Other Hay/Non Alfalfa	Cities
Forest	Peas	Ditches
Developed Area	Soybeans	Ditch Watershed
Grass/Pasture	Spring Wheat	
	Sweet Corn	

