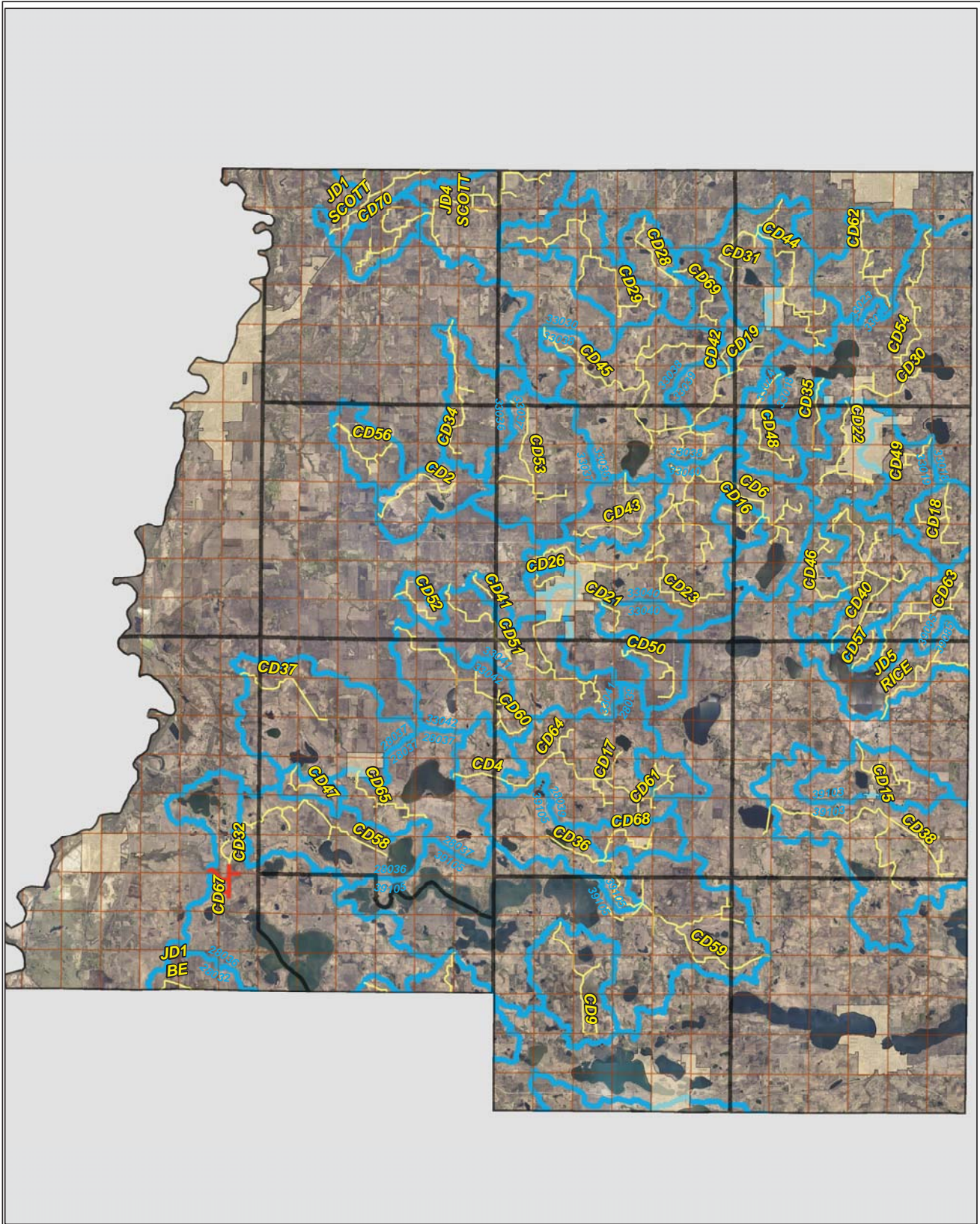
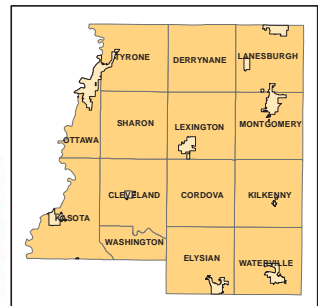
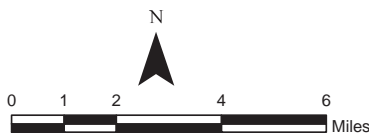


CD 67

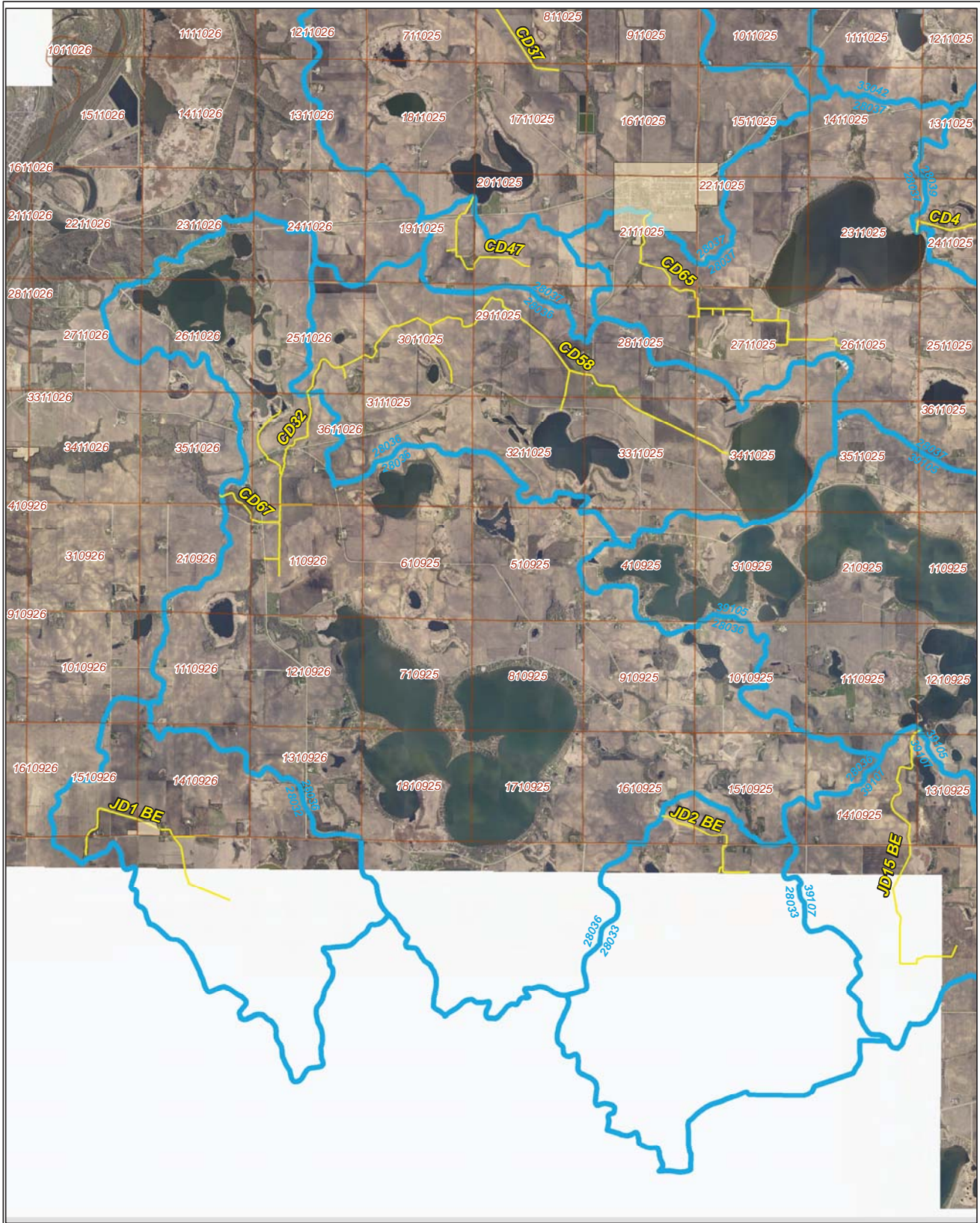


Legend

- Sections
- Cities
- Ditches**
-
-
- Ditch Watershed



Ditch Watershed



Legend

- Sections
- Cities
- Ditches
- Ditch Watershed

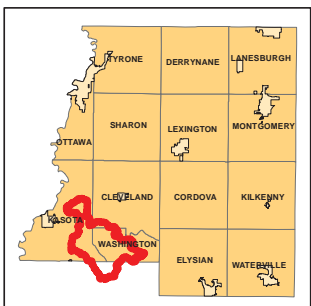
Ditch ID: 28036CD67
Acres: 12793.64



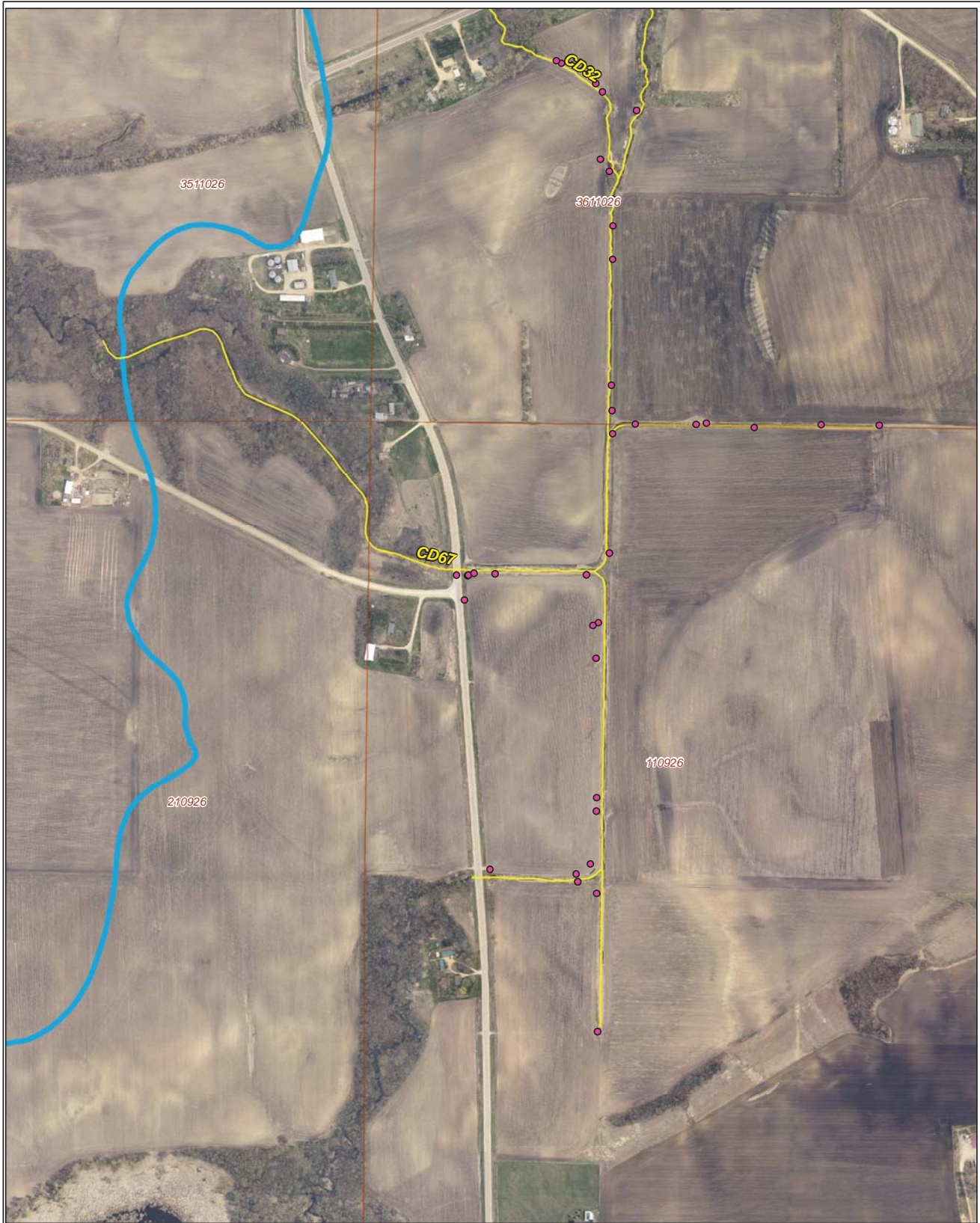
N



0 2,000 4,000
Feet



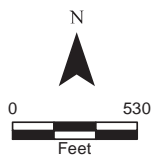
2006 Ditch Inventory



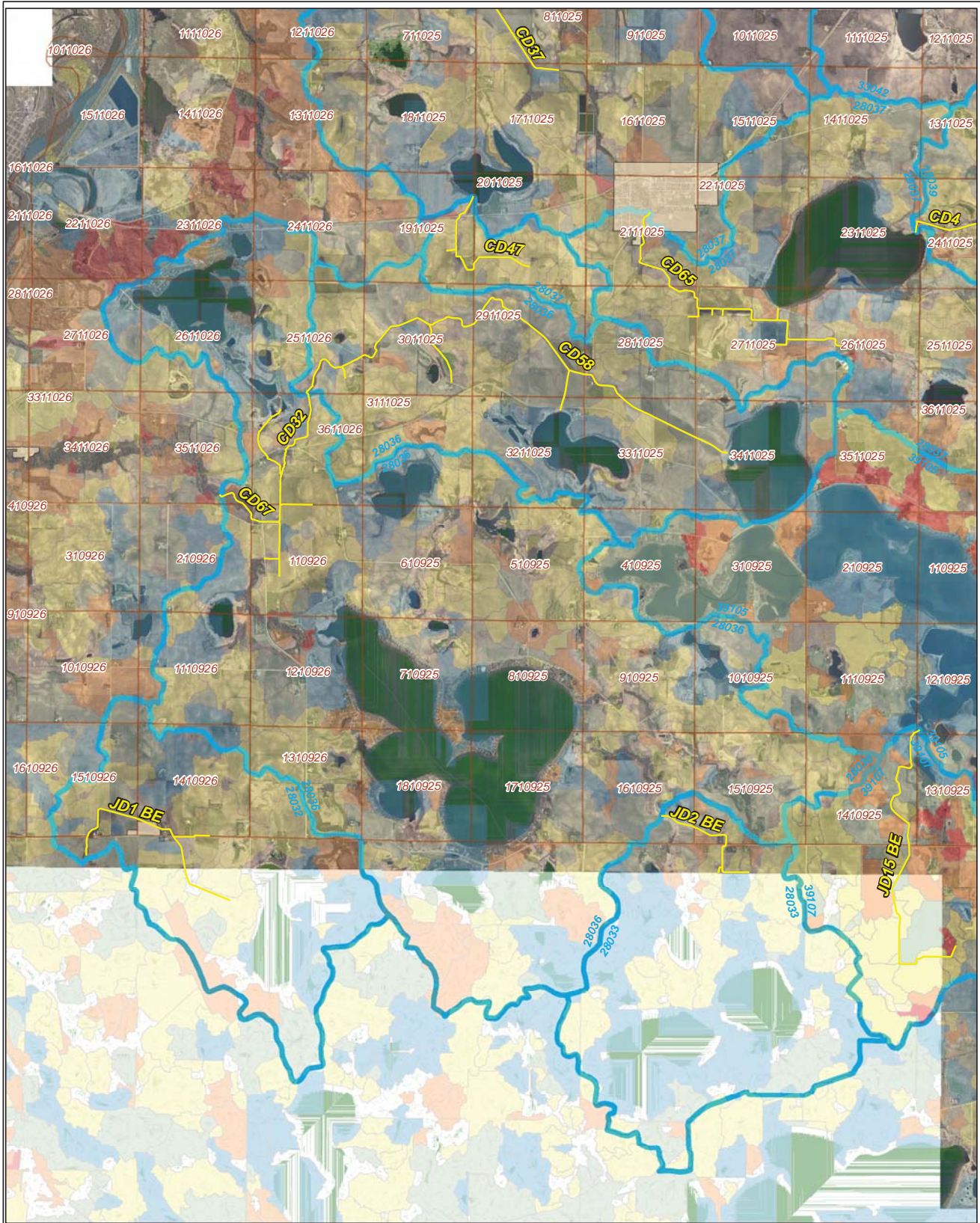
Legend

- Ditch Inventory
- Sections
- Cities
- Ditches
- Ditch Watershed

Ditch Name: CD67

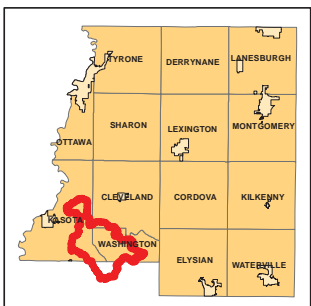
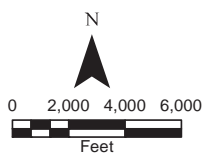


High Priority - Stream Power Index Sites



Ditch Name: CD67

Legend		
Mean SPI Rank	Combined Sediment and SPI Rank	Ditches
Low	Low	Sections
Low/Moderate	Low/Moderate	Cities
Moderate	Moderate	Ditch Watershed
High/Moderate	Moderate/High	
High	High	

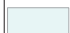







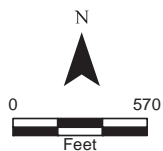
DNR Public Waters



Ditch Name: CD67

Legend



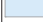
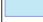




-  DNR Public Lakes and Basins
-  DNR Rivers and Streams
-  Sections
-  Cities
-  Ditches
-  Ditch Watershed

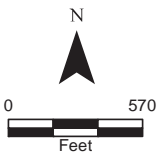


2015 Wetland Inventory

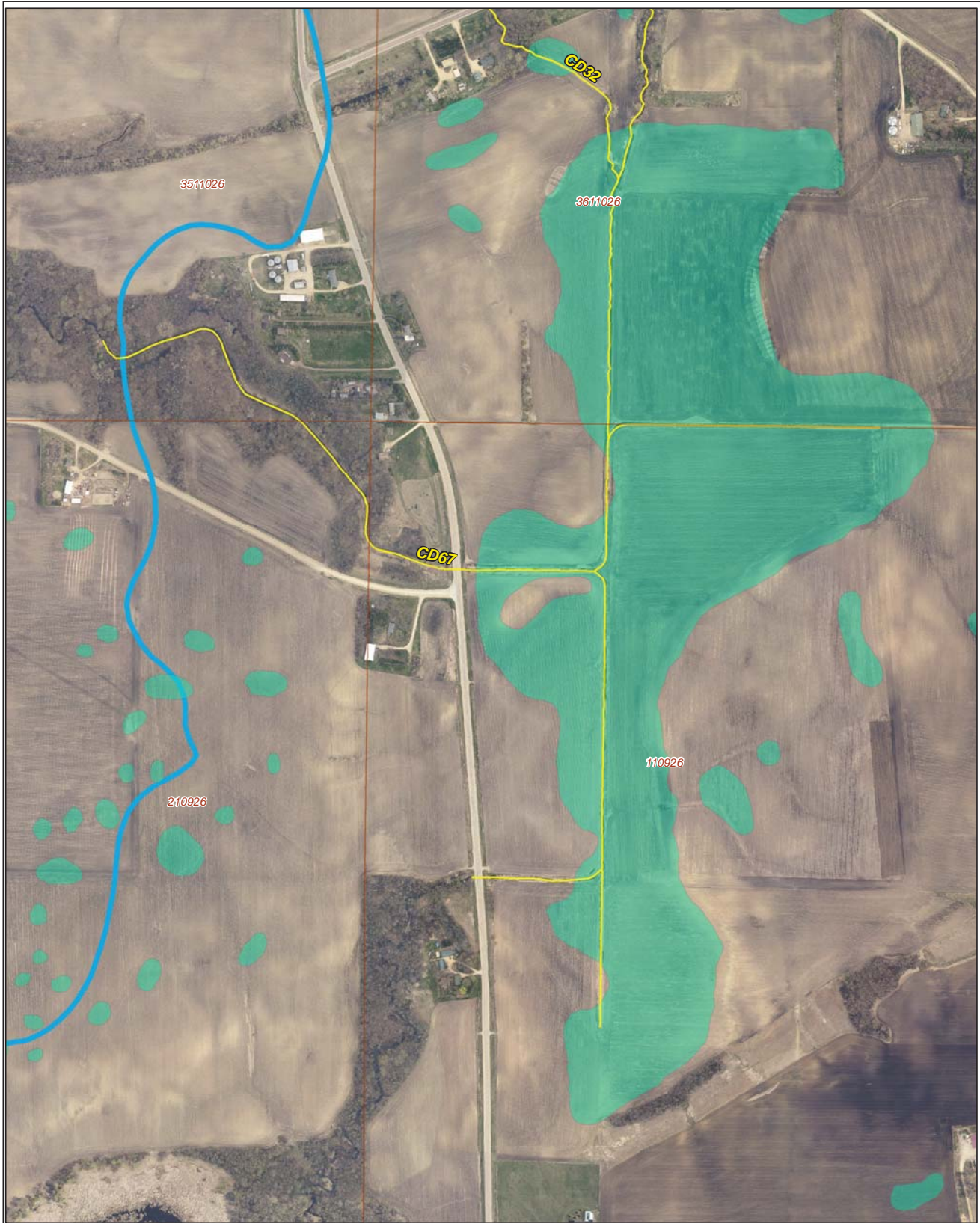


Ditch Name: CD67

Legend	
	Freshwater Emergent Wetland
	Freshwater Forested/Shrub Wetland
	Freshwater Pond
	Lake
	Riverine
	Sections
	Ditches
	Ditch Watershed



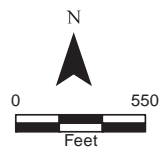
Restorable Wetlands



Ditch Name: CD67

Legend





- Retention Locations
- Sections
- Cities
- Ditches
- Ditch Watershed



Ditch Buffer



Legend

-  Ditches
-  Needs Buffer
-  Sections
-  Cities
-  Ditch Watershed

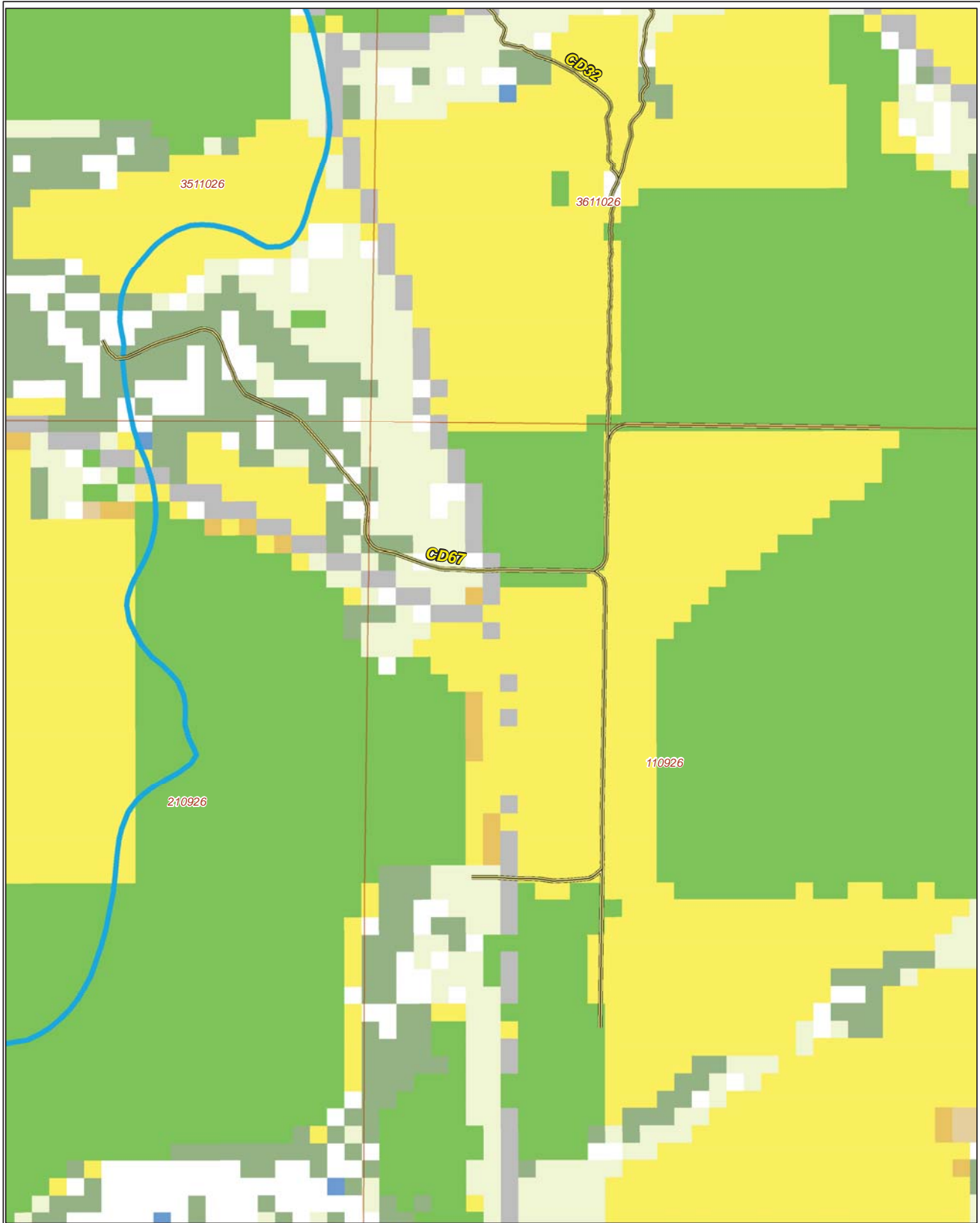
Ditch Name: CD67
Percent Buffered: 30.02%



N



2015 Crop Coverage



Ditch Name: CD67

Legend		
Coverage Type		
Alfalfa	Open Water	Sections
Corn	Other Hay/Non Alfalfa	Cities
Forest	Peas	Ditches
Developed Area	Soybeans	Ditch Watershed
Grass/Pasture	Spring Wheat	
	Sweet Corn	

