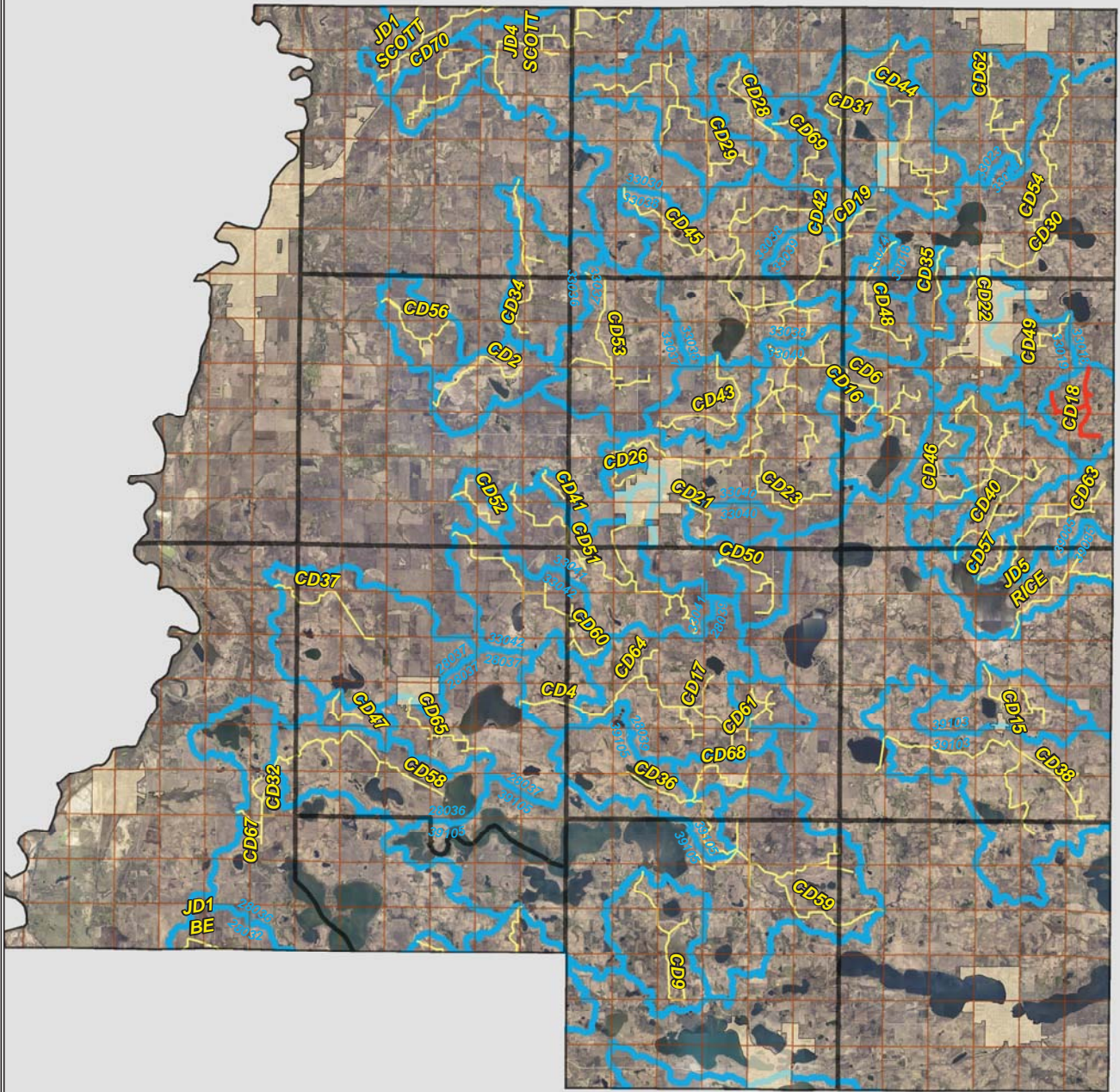


CD 18

LO PAYS FOR CULVERTS

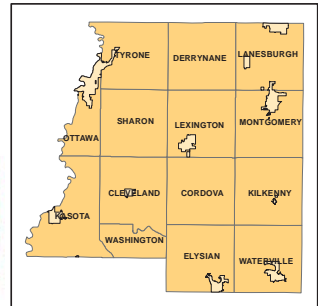


Legend

- Sections
- Cities
- Ditches
- Ditch Watershed







N



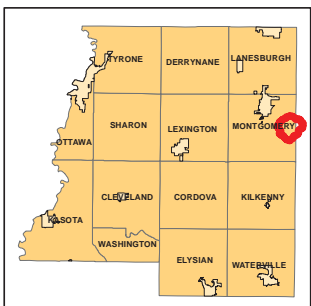
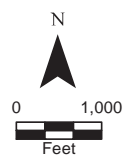
Ditch Watershed



Legend

-  Sections
-  Cities
-  Ditches
-  Ditch Watershed

Ditch ID: 33019CD18
Acres: 2028.71



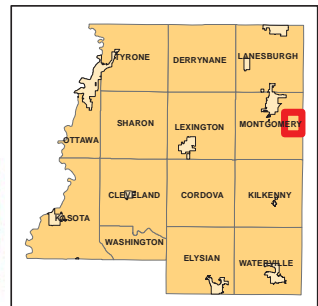
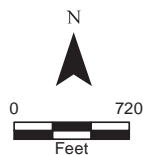
2006 Ditch Inventory



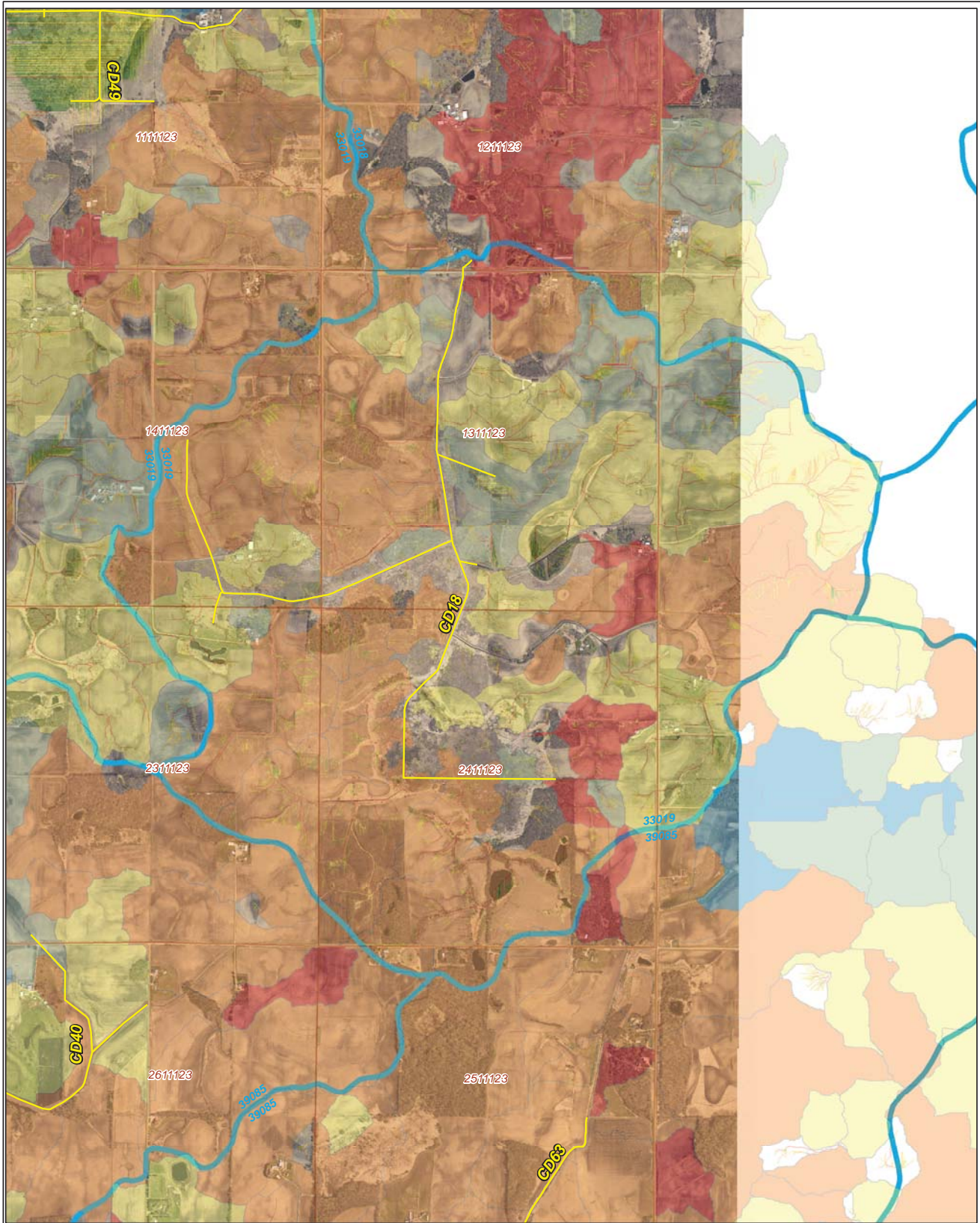
Legend

- Ditch Inventory
- Sections
- Cities
- Ditches
- Ditch Watershed

Ditch Name: CD18



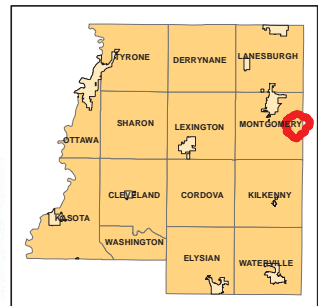
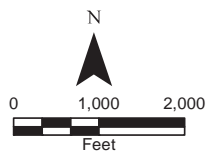
High Priority - Stream Power Index Sites



Ditch Name: CD18

Legend

Mean SPI Rank	Combined Sediment and SPI Rank	Ditches
Low	Low	Sections
Low/Moderate	Low/Moderate	Cities
Moderate	Moderate	Ditch Watershed
High/Moderate	Moderate/High	
High	High	









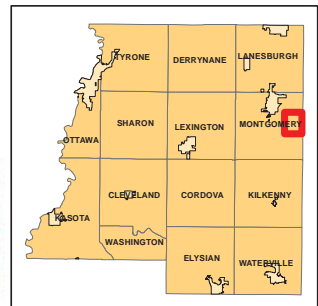
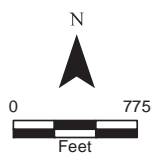
DNR Public Waters



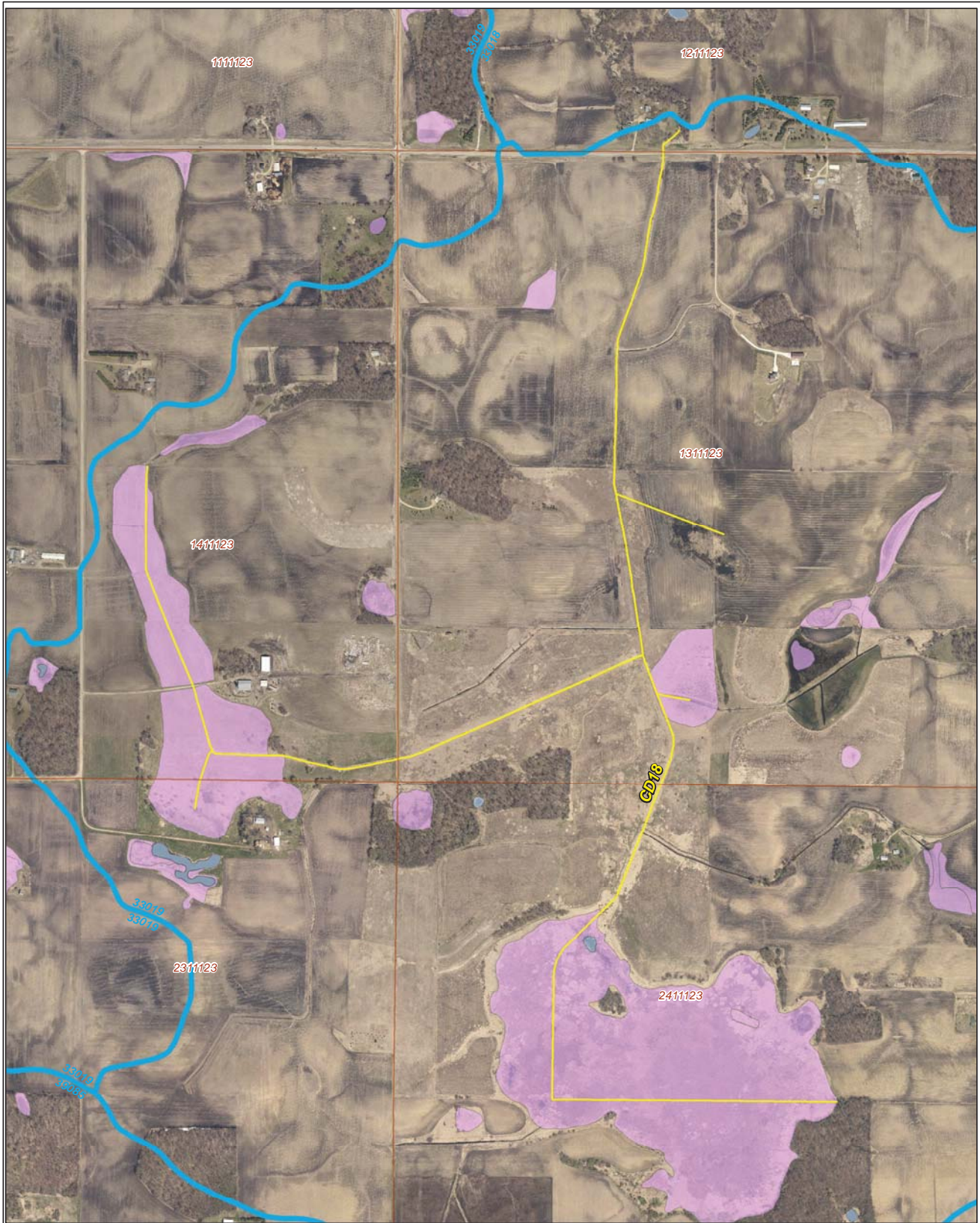
Ditch Name: CD18

Legend

-  DNR Public Lakes and Basins
-  DNR Rivers and Streams
-  Sections
-  Cities
-  Ditches
-  Ditch Watershed

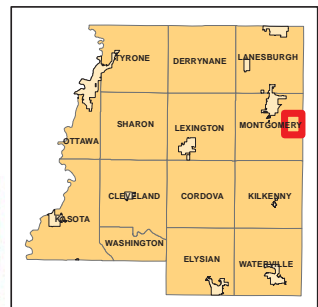
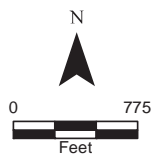


2015 Wetland Inventory

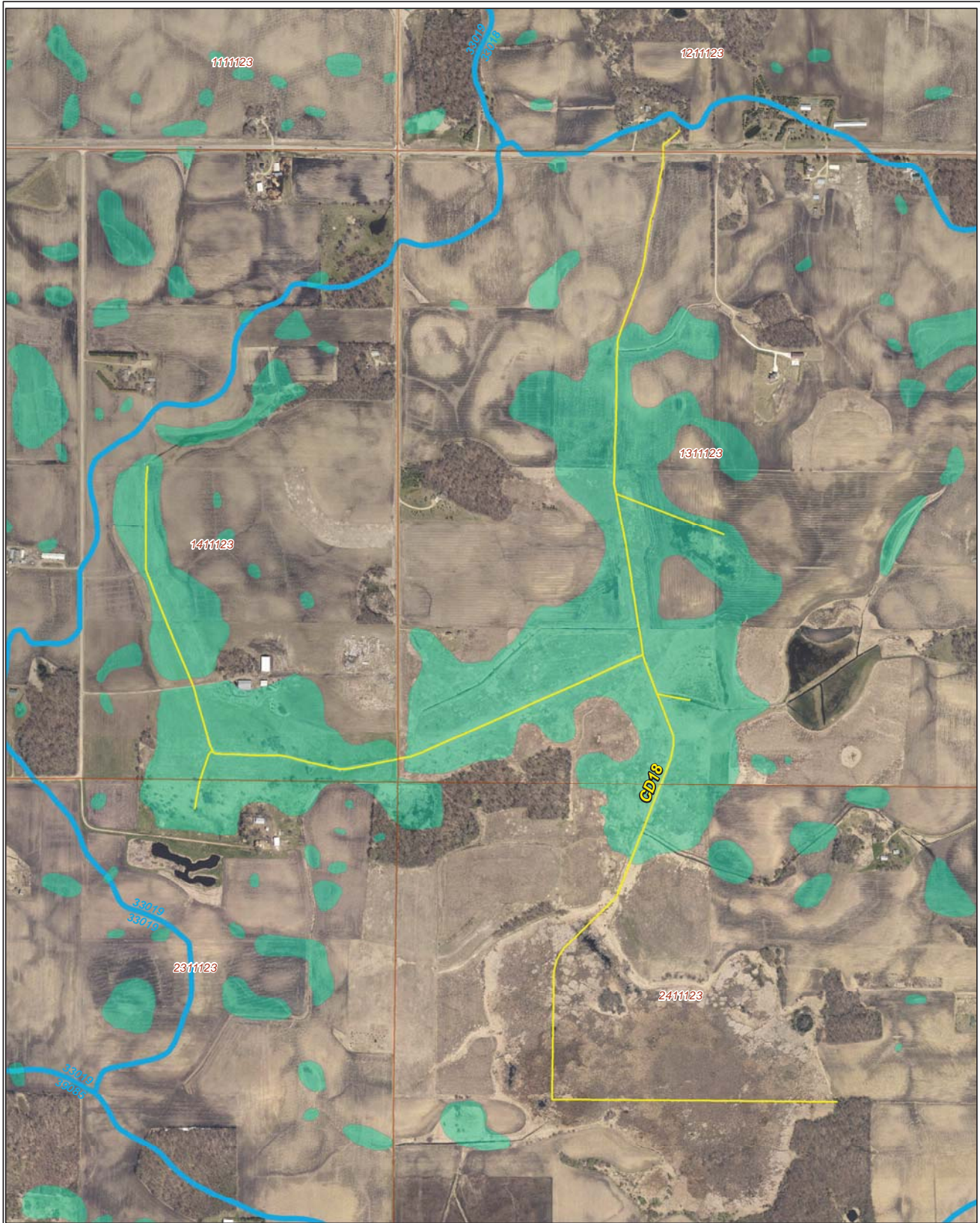


Ditch Name: CD18

Legend	
Wetland Type	
	Freshwater Emergent Wetland
	Freshwater Forested/Shrub Wetland
	Freshwater Pond
	Lake
	Riverine
	Sections
	Ditches
	Ditch Watershed



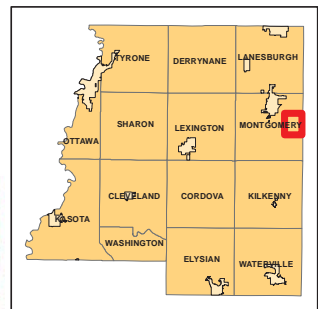
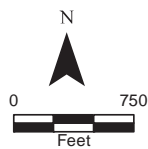
Restorable Wetlands



Ditch Name: CD18

Legend






- Retention Locations
- Sections
- Cities
- Ditches
- Ditch Watershed



Ditch Buffer



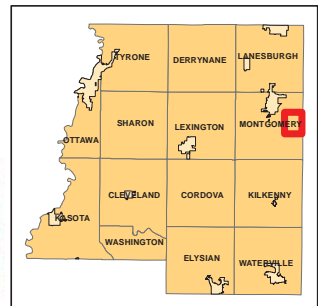
Legend

-  Ditches
-  Needs Buffer
-  Sections
-  Cities
-  Ditch Watershed

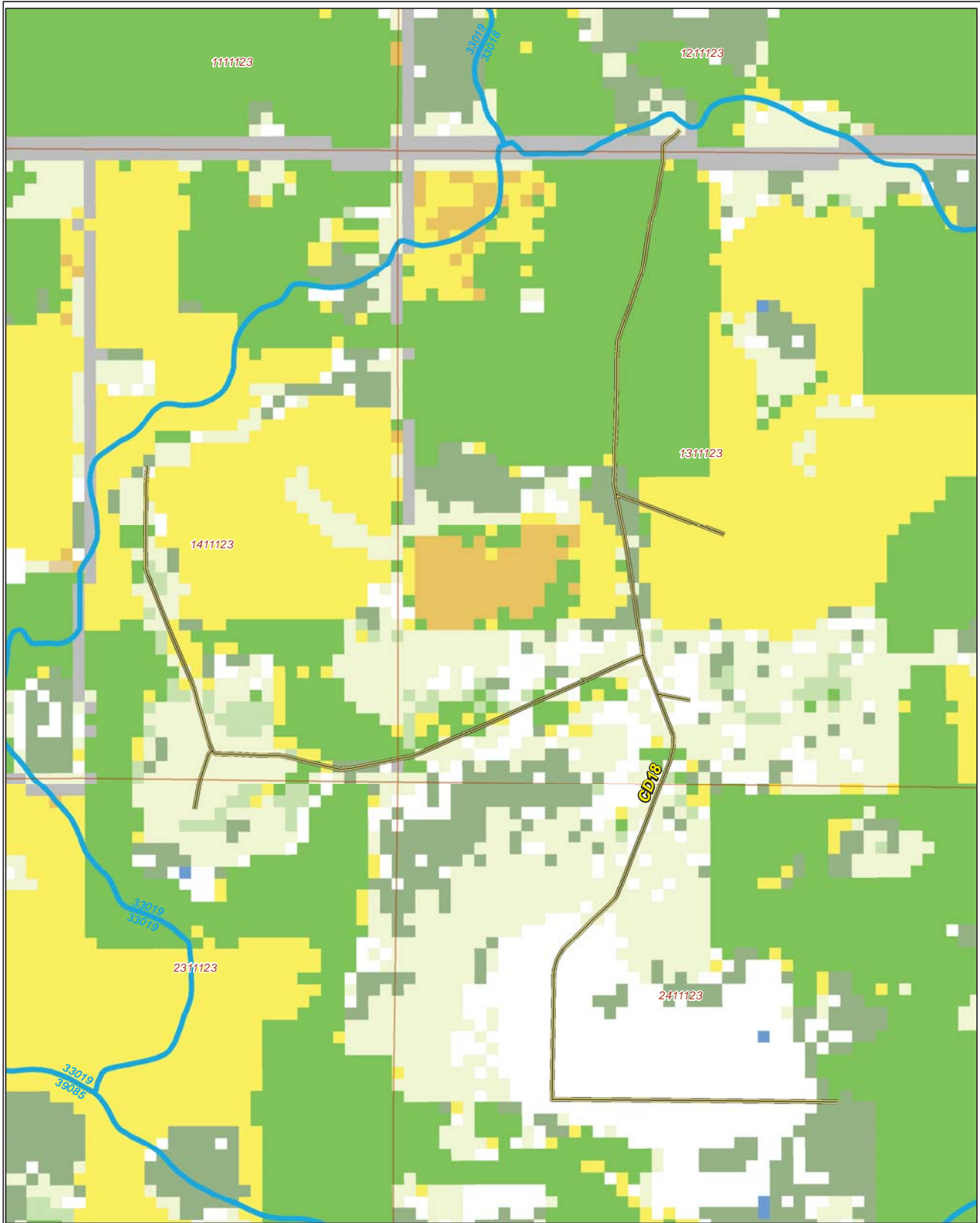
Ditch Name: CD18
Percent Buffered: 85.66%



N



2015 Crop Coverage



Ditch Name: CD18

Legend		
Coverage Type		
Alfalfa	Open Water	Sections
Corn	Other Hay/Non Alfalfa	Cities
Forest	Peas	Ditches
Developed Area	Soybeans	Ditch Watershed
Grass/Pasture	Spring Wheat	
	Sweet Corn	

