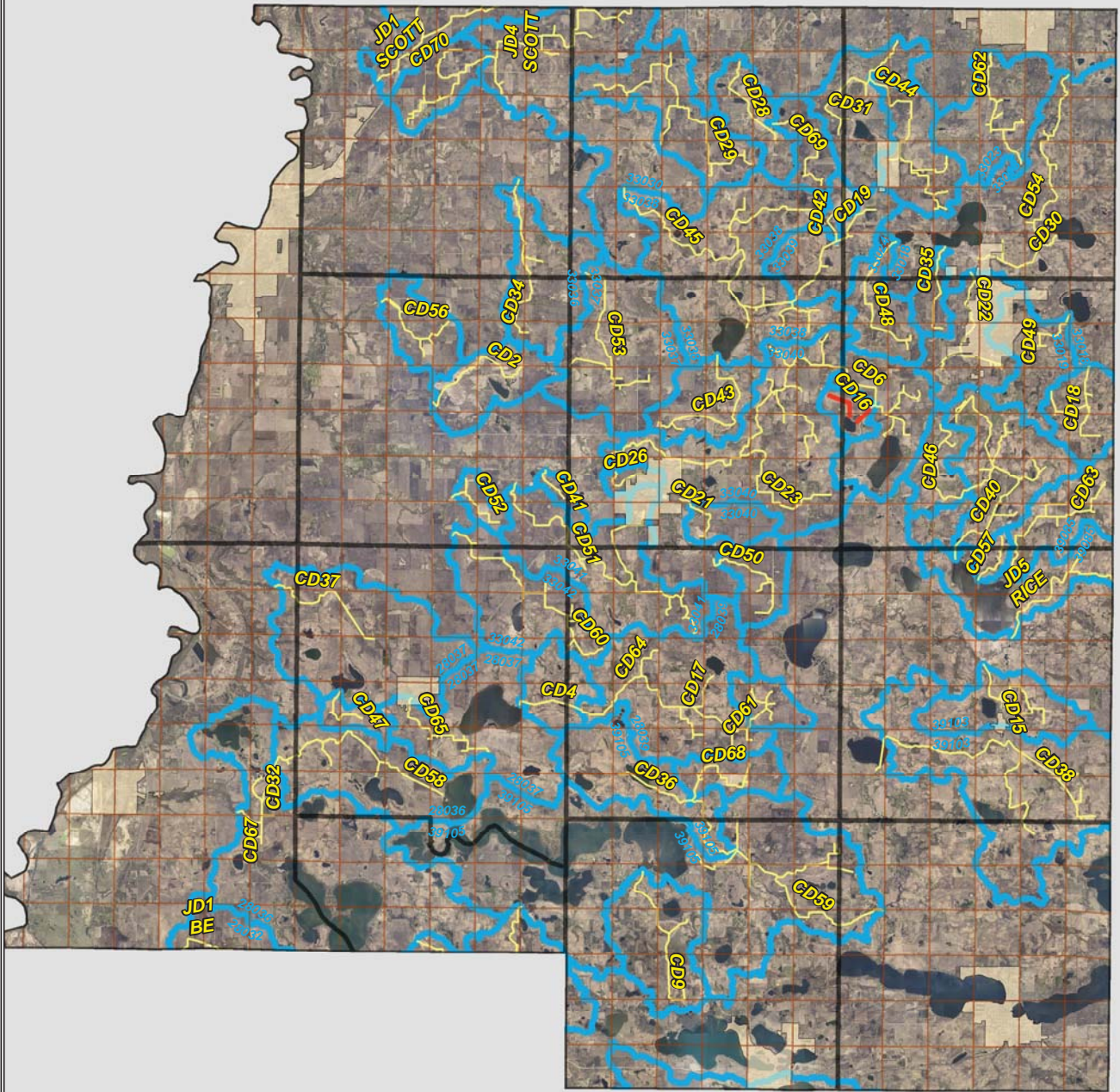


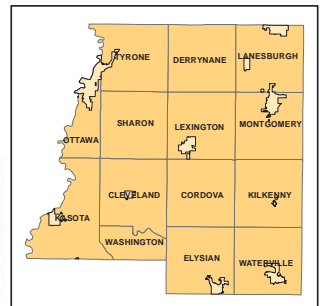
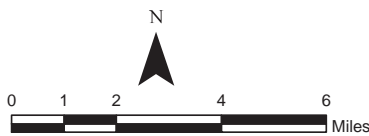
# CD 16

LO PAYS FOR CULVERTS



**Legend**

- Sections
- Cities
- Ditches**
- 
- 
- Ditch Watershed



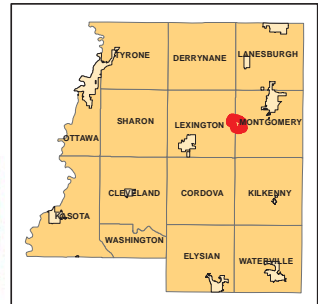
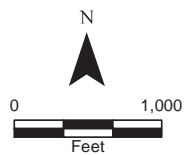
# Ditch Watershed



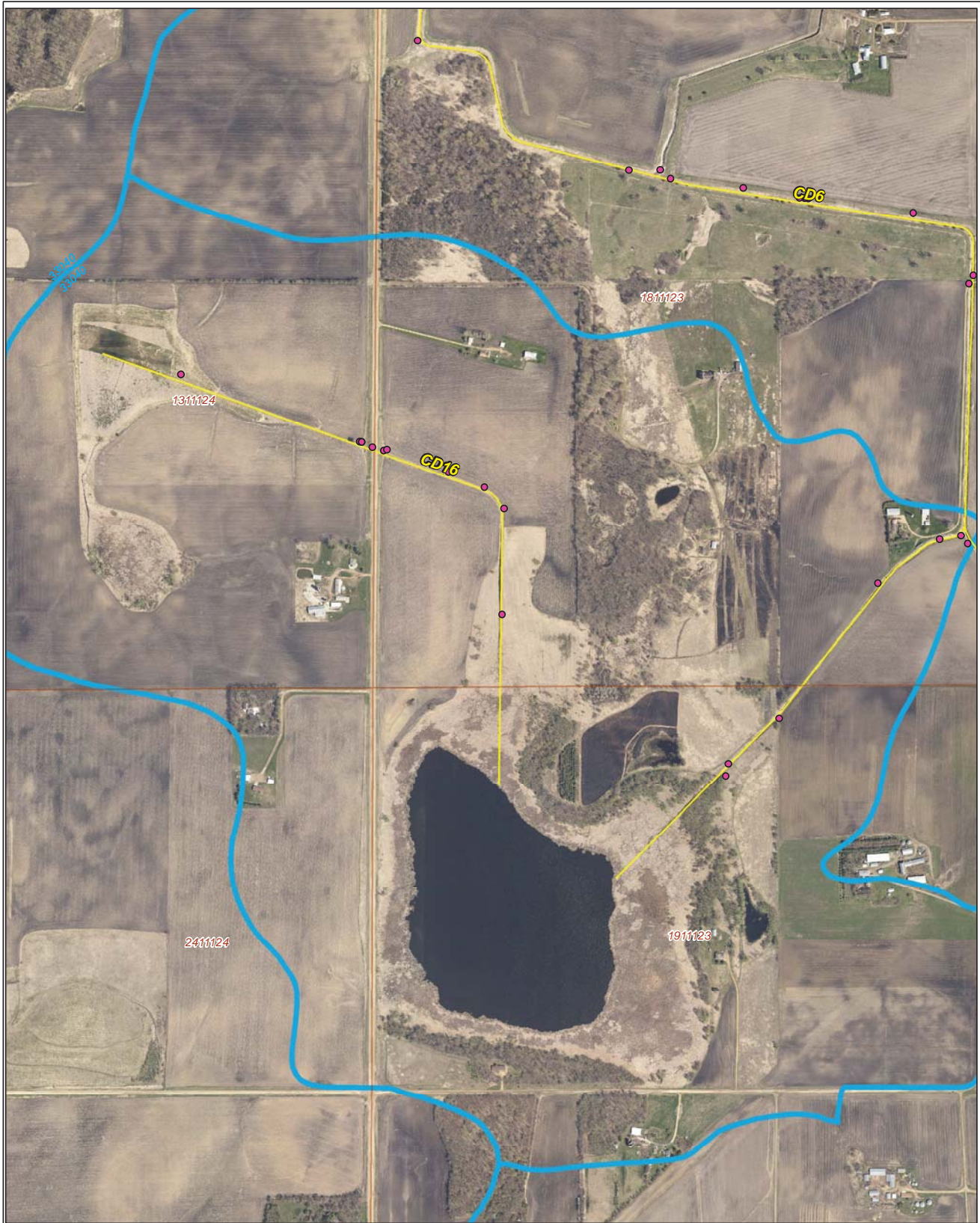
## Legend

- Sections
- Cities
- Ditches
- Ditch Watershed

Ditch ID: 33040CD16  
Acres: 646.94



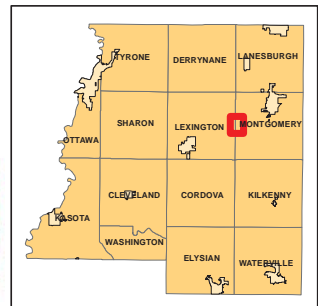
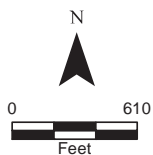
# 2006 Ditch Inventory



## Legend

- Ditch Inventory
- Sections
- Cities
- Ditches
- Ditch Watershed






Ditch Name: CD16



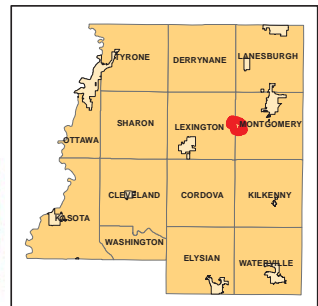
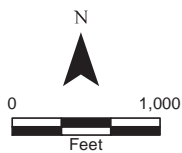
# High Priority - Stream Power Index Sites



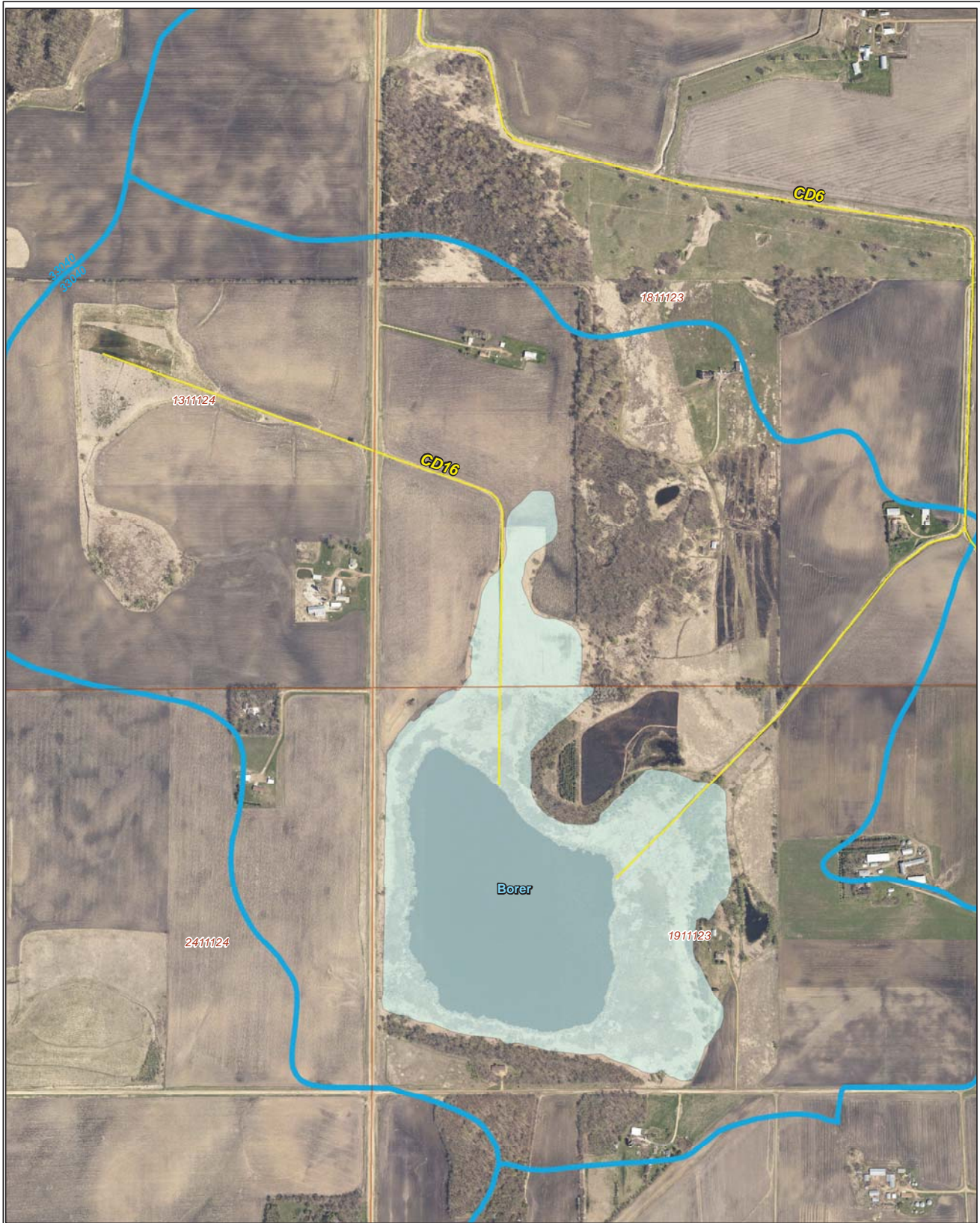
## Legend

-  Sediment
-  Ditches
-  Sections
-  Cities
-  Ditch Watershed

Ditch Name: CD16




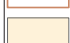
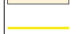



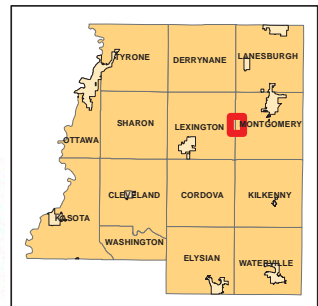
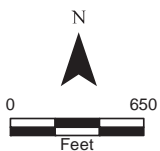
# DNR Public Waters



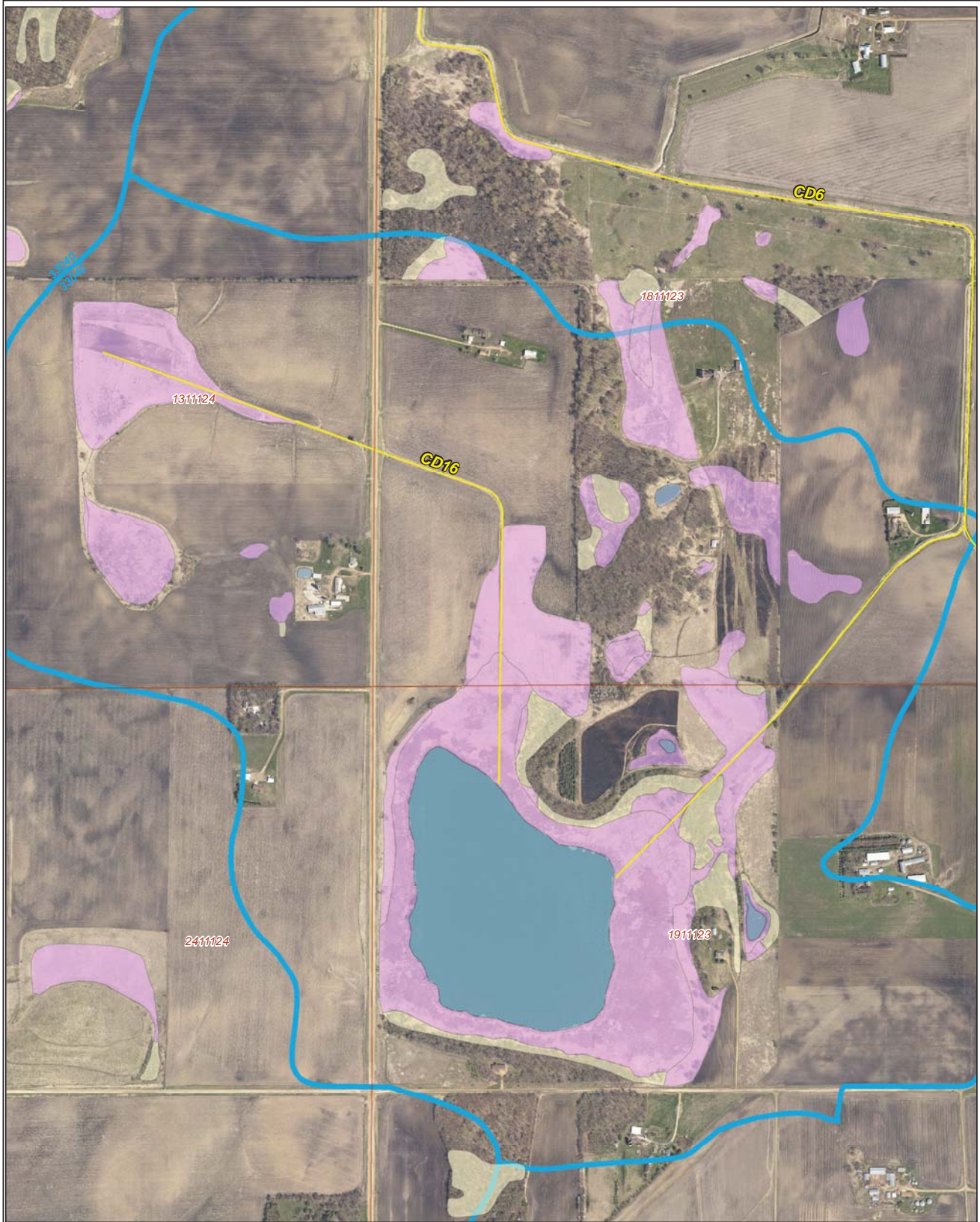
Ditch Name: CD16

## Legend

-  DNR Public Lakes and Basins
-  DNR Rivers and Streams
-  Sections
-  Cities
-  Ditches
-  Ditch Watershed

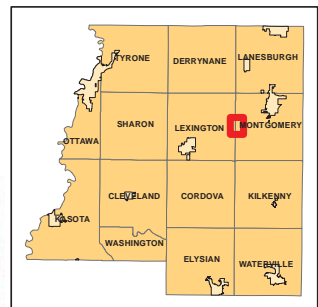
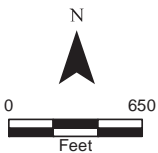


# 2015 Wetland Inventory

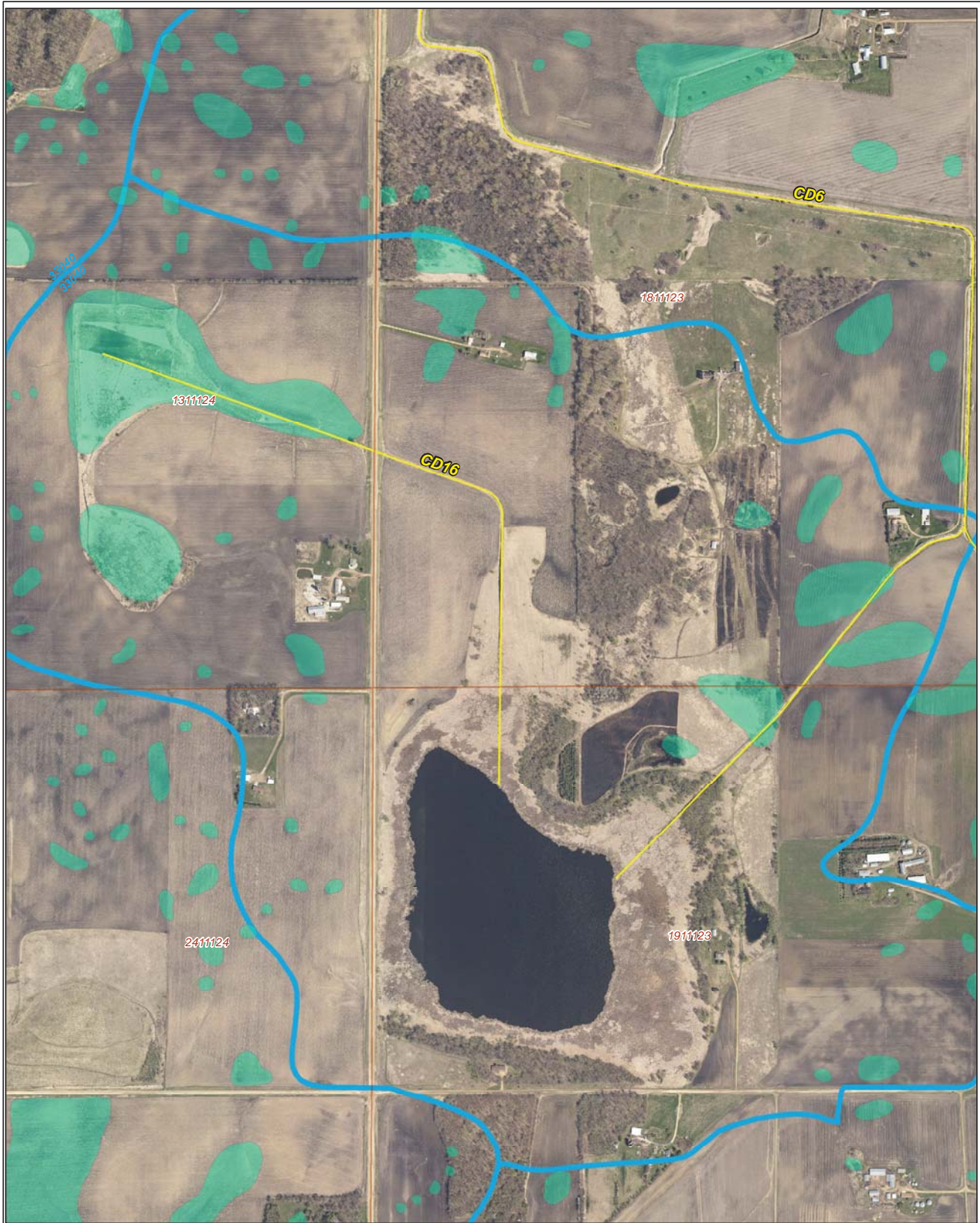


Ditch Name: CD16

Legend	
Wetland Type	
	Freshwater Emergent Wetland
	Freshwater Forested/Shrub Wetland
	Freshwater Pond
	Lake
	Riverine
	Sections
	Ditches
	Ditch Watershed



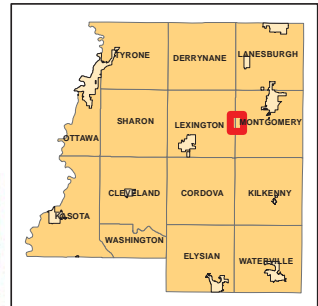
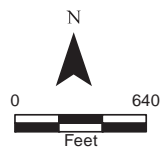
# Restorable Wetlands



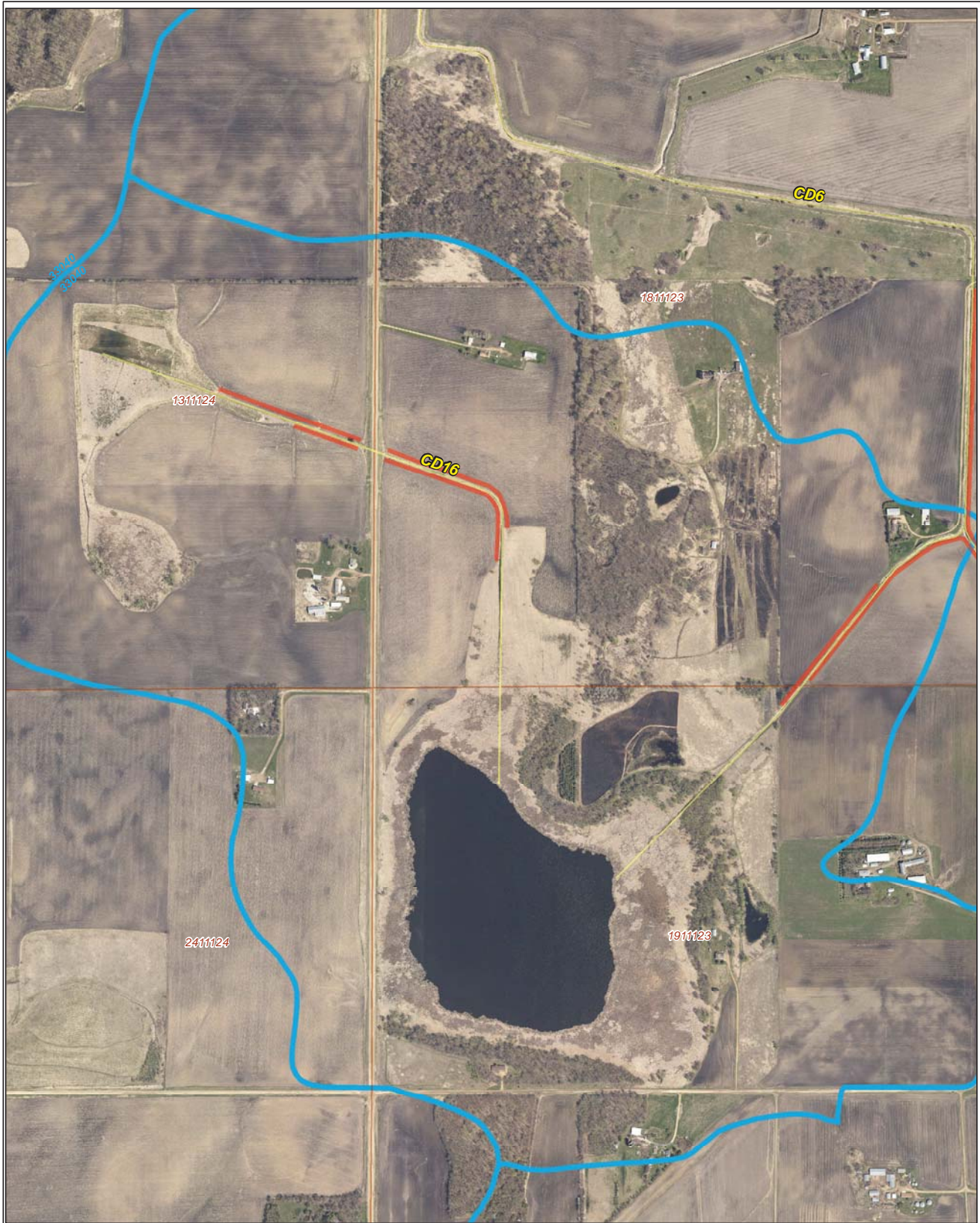
Ditch Name: CD16

## Legend






- Retention Locations
- Sections
- Cities
- Ditches
- Ditch Watershed



# Ditch Buffer



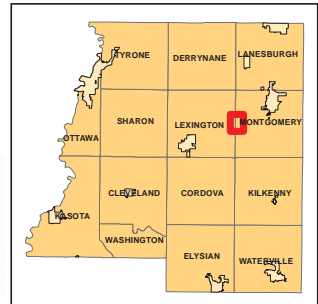
## Legend

-  Ditches
-  Needs Buffer
-  Sections
-  Cities
-  Ditch Watershed

Ditch Name: CD16  
Percent Buffered: 58.34%

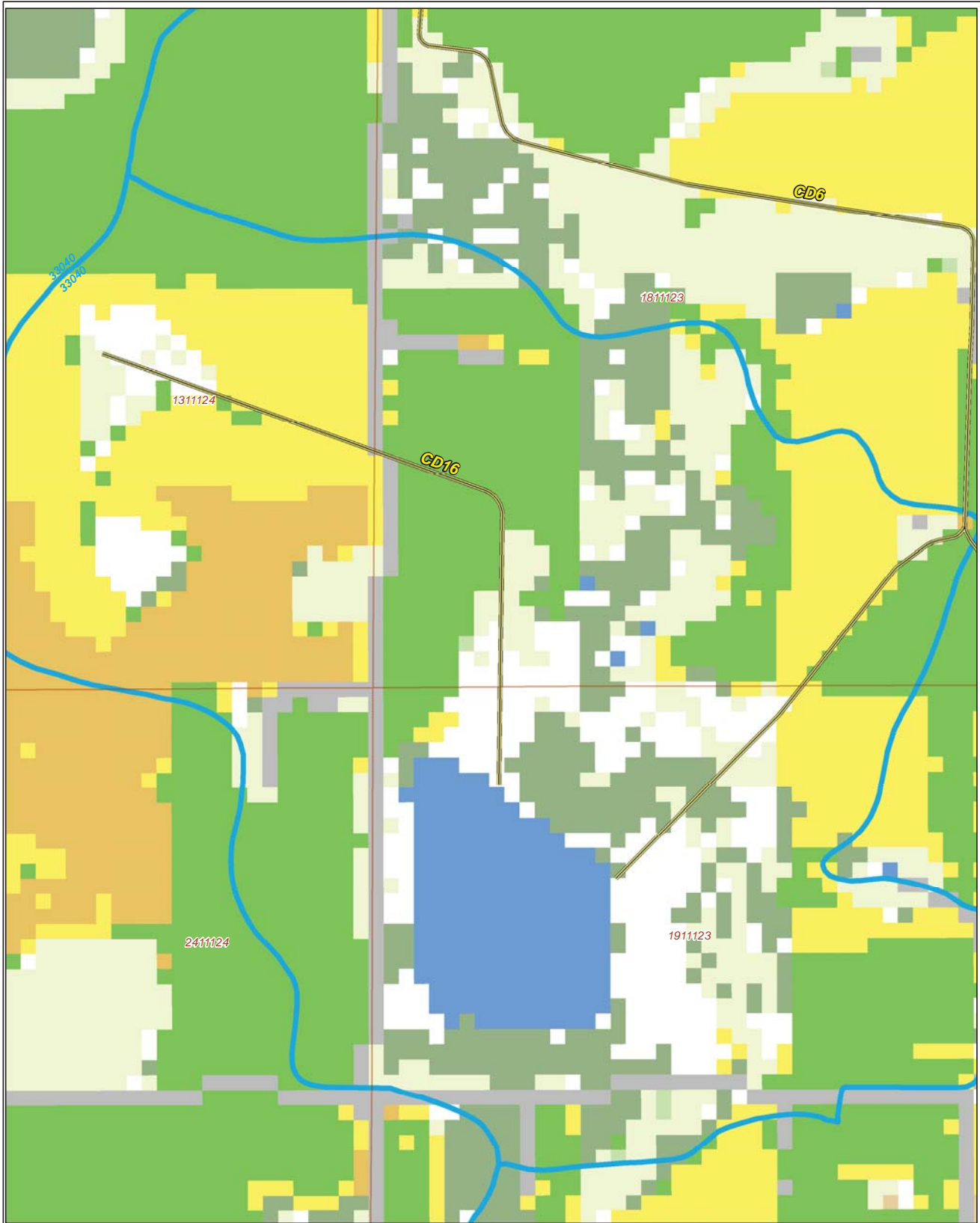


N





# 2015 Crop Coverage



Ditch Name: CD16

Legend	
Coverage Type	
Open Water	Sections
Alfalfa	Cities
Corn	Ditches
Forest	Ditch Watershed
Developed Area	Spring Wheat
Grass/Pasture	Sweet Corn
Other Hay/Non Alfalfa	Peas
Soybeans	

